

# MAP OF SURVEY WASHINGTON TOWNSHIP T-20N ; R-15W S.W. QTR. SEC. 31 HOLMES COUNTY, OHIO

201800114214  
B: 19 P: 3635  
FILED FOR RECORD IN  
HOLMES COUNTY, OH  
ANITA HALL, COUNTY RECORDER  
12/21/2018 03:38 PM  
SMALL PLAT . 40.00  
PAGES: 1

ORV 266 PG 2765

PLAT APPROVED  
*12/12/2018*

REFERENCE SURVEY:  
PLAT VOL. 4; PG. 130  
PLAT VOL. 6; PG. 51  
PLAT VOL. 8; PG. 387  
O.R. 223; PG. 602

BASIS OF BEARING:  
The bearings as shown hereon are  
relative to GRID NORTH of the OHIO  
STATE PLANE COORDINATE SYSTEM,  
NAD 83 DATUM

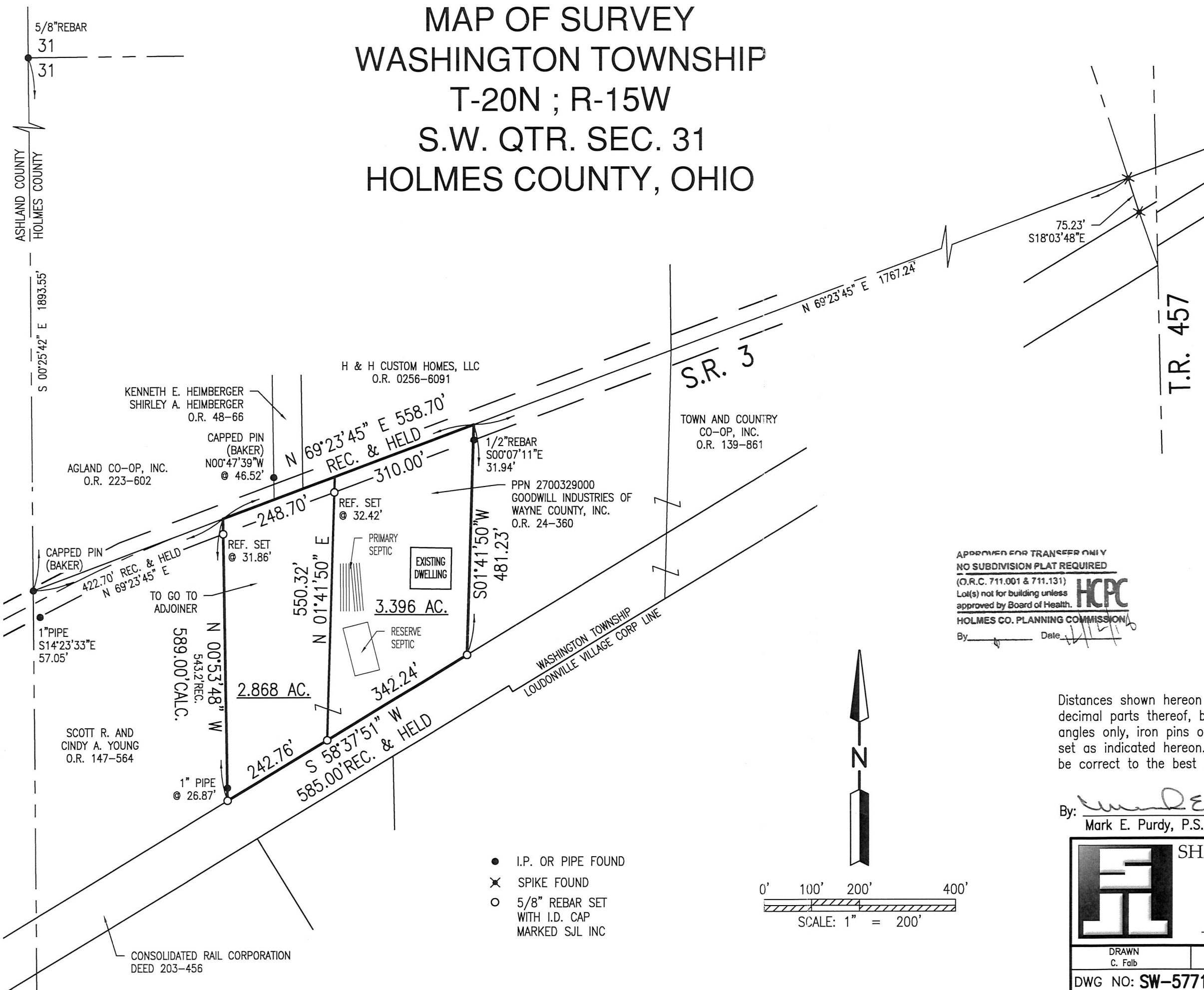
APPROVED FOR TRANSFER ONLY  
NO SUBDIVISION PLAT REQUIRED  
(O.R.C. 711.001 & 711.131)  
Lot(s) not for building unless  
approved by Board of Health.  
HOLMES CO. PLANNING COMMISSION  
By: \_\_\_\_\_ Date: *11-20-18*

Distances shown hereon are expressed in feet and decimal parts thereof, bearings are used to express angles only, iron pins or monuments were found or set as indicated hereon. All of which I believe to be correct to the best of my knowledge.

By: *Mark E. Purdy* 11-20-18  
Mark E. Purdy, P.S. #7307 Date



	SHAFFER, JOHNSTON, LICHTENWALTER & ASSOCIATES, INC. Consulting Engineers & Surveyors 3477 Commerce Parkway, Suite C Wooster, Ohio 44691 TEL (330) 345-6377 FAX (330) 345-6725 EMAIL sjl@sjl-inc.com			
	DRAWN C. Falb	CHECKED	SCALE 1" = 200'	DATE 10/18/18
DWG NO: <b>SW-5771</b>		JOB NO: <b>SW-5771</b>	SHEET <b>1 OF 1</b>	



- I.P. OR PIPE FOUND
- ✕ SPIKE FOUND
- 5/8" REBAR SET WITH I.D. CAP MARKED SJL INC

