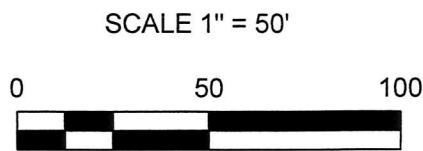


ORV 266 PG 948

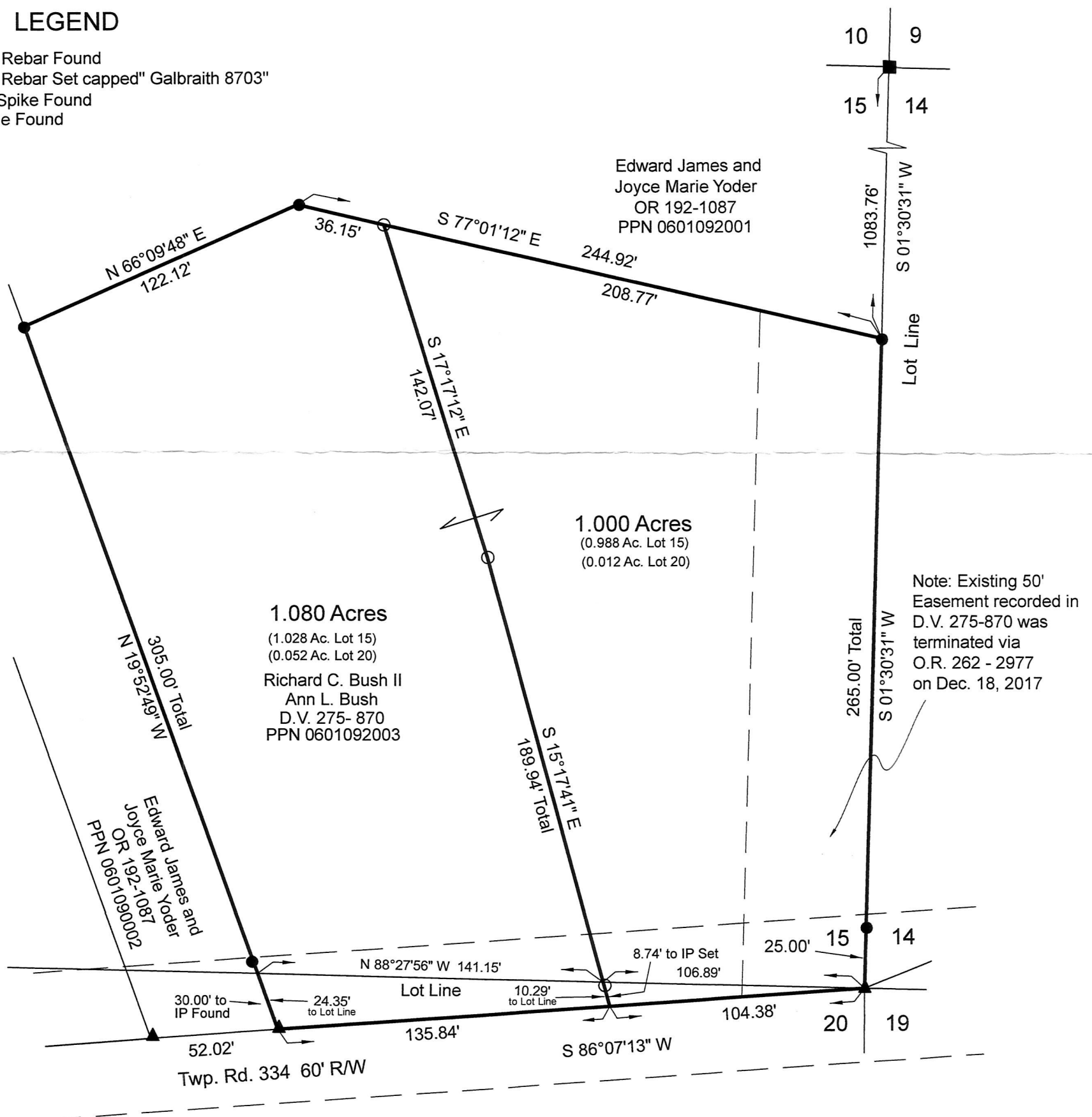
Hardy Township
 1st Qtr. Lots 15 and 20
 T-9 N; R-7W
 Holmes County, Ohio
 SURVEYED FOR: Rick Bush

- REFERENCES:
 Deed Vol.275 Page 870
 Official Record Vol. 192 Page 1087
 Plat Vol.16 Page 261
 Plat Vol.12 Page 959
 Plat Vol.96 Page 1174
 Plat Vol.13 Page 4
 Plat Vol.17 Page 186
 Basis of Bearing from:
 State Plane coordinate System
 Ohio North Zone (NAD83)



LEGEND

- 5/8" Rebar Found
- 5/8" Rebar Set capped" Galbraith 8703"
- ▲ RR Spike Found
- Stone Found



APPROVED FOR TRANSFER ONLY
 NO SUBDIVISION PLAT REQUIRED
 (O.R.C. 711.001 & 711.131)
 Lot(s) not for building unless
 approved by Board of Health.
 HOLMES CO. PLANNING COMMISSION
 By: [Signature] Date: 12/4/18



I certify this survey to be correct to the best of my knowledge.

Caleb Jerome Galbraith P.S. 8703
 Date: June 5, 2017, Revised November 8, 2018
 Job ID: S1117

Pioneer Surveying & Services, LLC.
 4090 Township Road 271
 Killbuck, Ohio 44637
 Phone: 330-276-0220
 Email: caleb@pioneersurveyingandservices.com



PLAT APPROVED

12/3/2018 TB