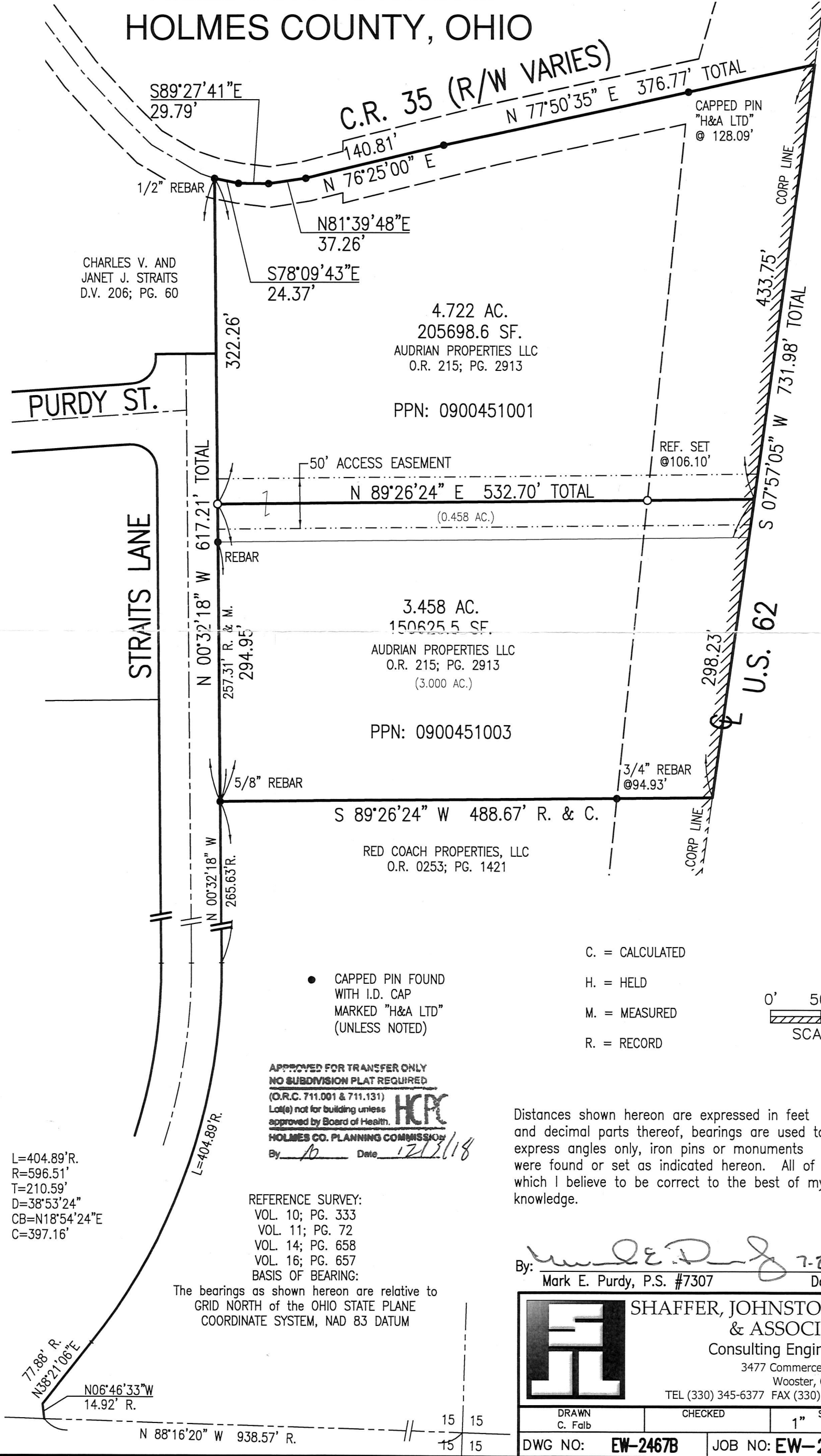


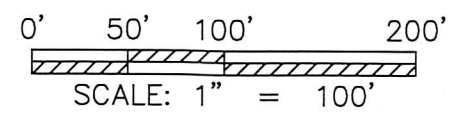
MAP OF SURVEY
 N.W. QTR. SEC. 15
 T-8N ; R-7W
 VILLAGE OF KILLBUCK
 KILLBUCK TOWNSHIP
 HOLMES COUNTY, OHIO

201800113831
 B: 19 P: 3613
 FILED FOR RECORD IN
 HOLMES COUNTY, OH
 ANITA HALL, COUNTY RECORDER
 12/03/2018 11:25 AM
 SMALL PLAT . 40.00
 PAGES: 1

ORV 266 PG 755



PLAT APPROVED
 12/3/2018



- C. = CALCULATED
- H. = HELD
- M. = MEASURED
- R. = RECORD

● CAPPED PIN FOUND WITH I.D. CAP MARKED "H&A LTD" (UNLESS NOTED)

APPROVED FOR TRANSFER ONLY
 NO SUBDIVISION PLAT REQUIRED
 (O.R.C. 711.001 & 711.131)
 Lot(s) not for building unless approved by Board of Health.
 HOLMES CO. PLANNING COMMISSION
 By: 10 Date: 12/3/18

Distances shown hereon are expressed in feet and decimal parts thereof, bearings are used to express angles only, iron pins or monuments were found or set as indicated hereon. All of which I believe to be correct to the best of my knowledge.



By: Mark E. Purdy 7-20-18
 Mark E. Purdy, P.S. #7307 Date

REFERENCE SURVEY:
 VOL. 10; PG. 333
 VOL. 11; PG. 72
 VOL. 14; PG. 658
 VOL. 16; PG. 657
 BASIS OF BEARING:

The bearings as shown hereon are relative to GRID NORTH of the OHIO STATE PLANE COORDINATE SYSTEM, NAD 83 DATUM

L=404.89'R.
 R=596.51'
 T=210.59'
 D=38°53'24"
 CB=N18°54'24"E
 C=397.16'

SHAFFER, JOHNSTON, LICHTENWALTER & ASSOCIATES, INC.
 Consulting Engineers & Surveyors
 3477 Commerce Parkway, Suite C
 Wooster, Ohio 44691
 TEL (330) 345-6377 FAX (330) 345-6725 EMAIL sjl@sjl-inc.com

DRAWN C. Falb	CHECKED	1" SCALE = 100'	DATE 06/05/18
DWG NO: EW-2467B		JOB NO: EW-2467B	
			SHEET 1 OF 1