

VILLAGE OF GLENMONT
 Richland Township
 S.E. Qtr, Section 1
 T-8 N; R-9 W
 Holmes County, Ohio

201800113155
 B: 19 P: 3594
 FILED FOR RECORD IN
 HOLMES COUNTY, OH
 ANITA HALL, COUNTY RECORDER
 10/22/2018 03:06 PM
 SMALL PLAT . 40.00
 PAGES: 1



REFERENCES:

- Deed Vol. 276-494
- Deed Vol. 276-496
- Deed Vol. 276-498
- Plat Vol. 16 Page 167
- Plat Vol. 16 Page 168
- Plat Vol. 16 Page 66
- Plat Vol. 16 Page 181
- Plat Vol. 18 Page 532
- Plat Vol. 19 Page 524
- Basis of Bearing from Plat Vol. 16 Page 181

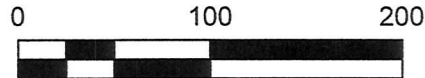
SURVEYED FOR: Virginia Purdy

APPROVED FOR TRANSFER ONLY
 NO SUBDIVISION PLAT REQUIRED
 (O.R.C. 711.001 & 711.101)
 not for building unless
 approved by Board of Health.
 HOLMES CO. PLANNING COMMISSION
 By: *N* Date: *10/15/18*

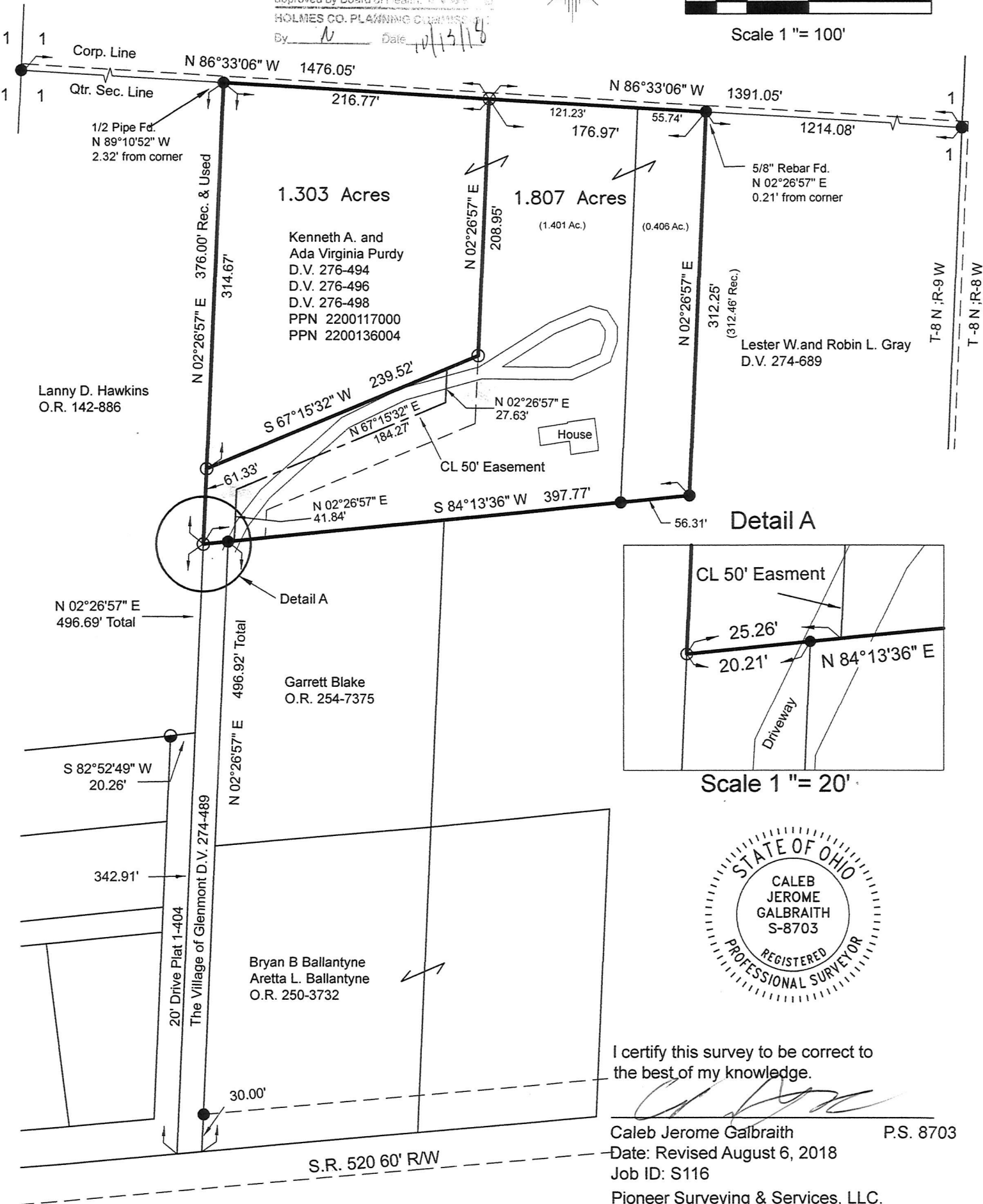


LEGEND *ORV 265 PGS 4577+ 4581*

- 5/8" Rebar Found
- 5/8" Rebar Set capped" Galbraith 8703"
- ◐ 3/4 Pipe Found



Scale 1" = 100'



I certify this survey to be correct to the best of my knowledge.

Caleb Jerome Galbraith
 Caleb Jerome Galbraith P.S. 8703
 Date: Revised August 6, 2018
 Job ID: S116

Pioneer Surveying & Services, LLC.
 4090 Township Road 271
 Killbuck, Ohio 44637
 Phone: 330-276-0220
 Email: caleb@pioneersurveyingandservices.com

PLAT APPROVED



10/15/2018 TS