

SCALE: 1"=100'

- 5/8" REBAR FOUND UNLESS OTHERWISE NOTED
- 5/8" REBAR SET WITH I.D. CAP I.D. CAP MARKED "BAKER 6938"

REFERENCES

DEED VOL. 270 PAGE 1
 O.R. VOL. 232 PAGE 3127
 O.R. VOL. 178 PAGE 3235
 O.R. VOL. 247 PAGE 7058
 PLAT VOL. 14 PAGE 834
 PLAT VOL. 15 PAGE 35
 PLAT VOL. 12 PAGE 668
 PLAT VOL. 19 PAGE 310
 BEARINGS FROM
 PLAT VOL. 15 PAGE 35



I CERTIFY THIS SURVEY TO BE CORRECT TO THE BEST OF MY KNOWLEDGE.

Donald C. Baker

DONALD C. BAKER P.S. 6938
 DATE: JAN. 24, 2018
 FDB\VJD
 FILE NAME: WORK4\S-30-18

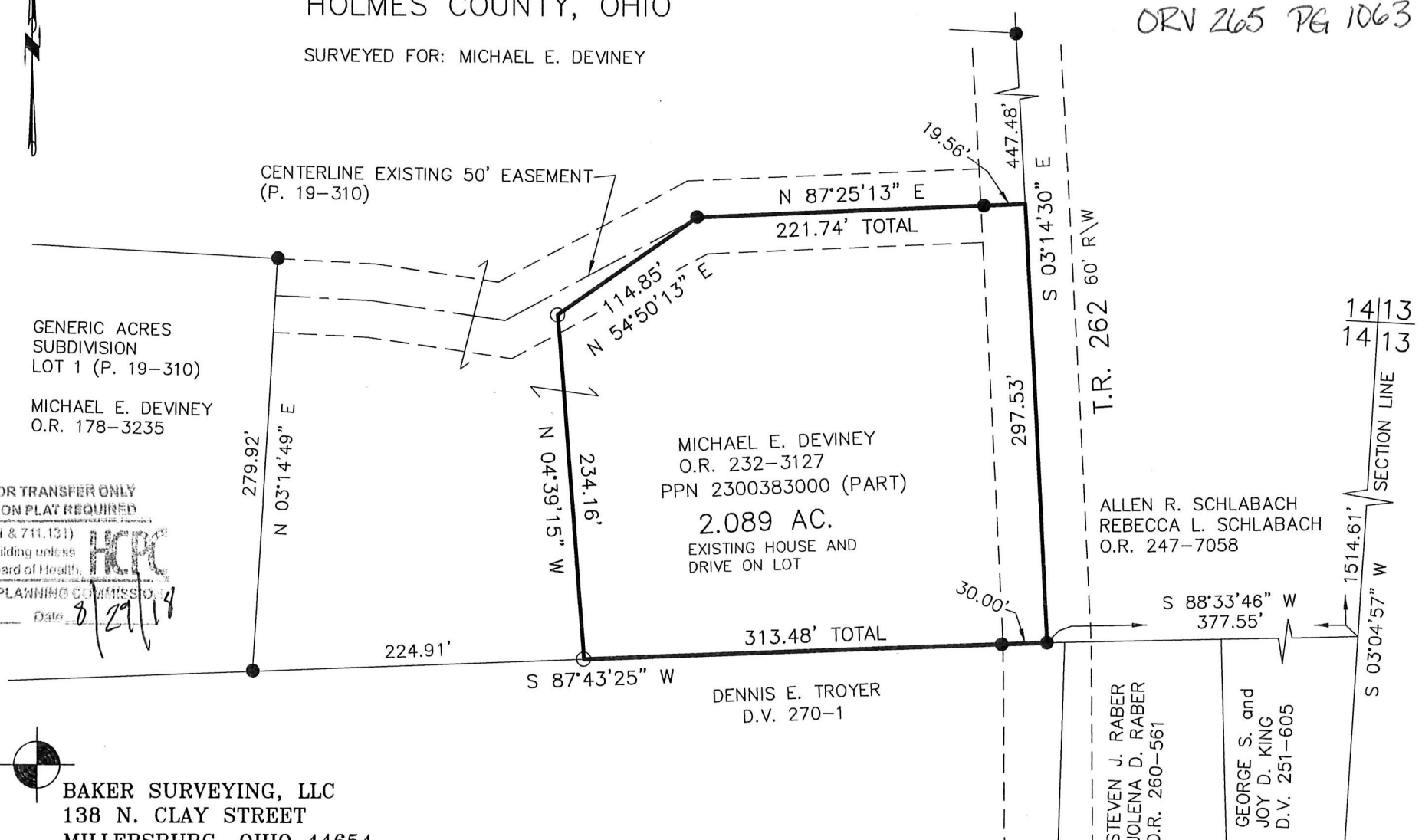


BAKER SURVEYING, LLC
 138 N. CLAY STREET
 MILLERSBURG, OHIO 44654
 PH. 330-674-4788
 FAX 330-674-6027

APPROVED FOR TRANSFER ONLY
 NO SUBDIVISION PLAT REQUIRED
 (O.R.C. 711.001 & 711.131)
 Lot(s) not for building unless approved by Board of Health.
 HOLMES CO. PLANNING COMMISSION
 By *W* Date *8/29/18*

RIPLEY TOWNSHIP
 S.E. QTR. SECTION 14
 T-17 N; R-14 W
 HOLMES COUNTY, OHIO

SURVEYED FOR: MICHAEL E. DEVINEY



201800112436

B: 19 P: 3561

FILED FOR RECORD IN

HOLMES COUNTY, OH

ANITA HALL, COUNTY RECORDER

09/10/2018 09:05 AM

SMALL PLAT . 40.00

PAGES: 1

ORV 265 PG 1063

PLAT APPROVED

8/27/2018 TD