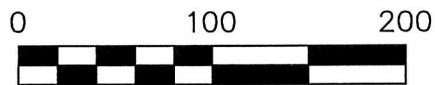




RESURVEY OF PPN 0601188002



SCALE: 1"=100'

- 5/8" REBAR FOUND UNLESS OTHERWISE NOTED
- △ R.R. SPIKE SET
- 5/8" REBAR SET WITH I.D. CAP I.D. CAP MARKED "BAKER 6938"

REFERENCES

DEED VOL. 232 PAGE 548  
 O.R. VOL. 184 PAGE 3351  
 PLAT VOL. 10 PAGE 446  
 PLAT VOL. 10 PAGE 618  
 PLAT VOL. 14 PAGE 130  
 PLAT VOL. 18 PAGE 565  
 PLAT VOL. 14 PAGE 393  
 BEARINGS FROM  
 PLAT VOL. 10 PAGE 618

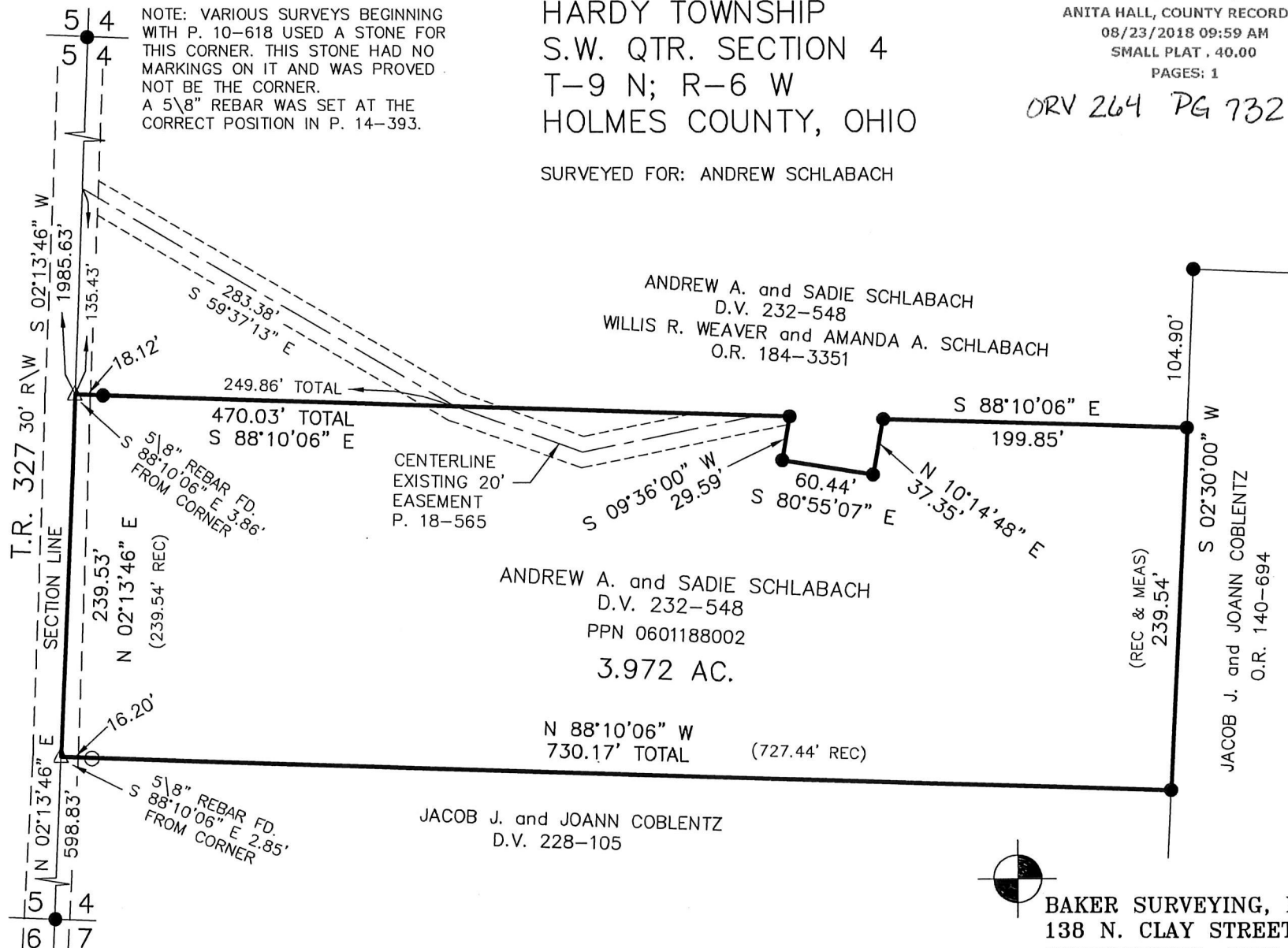


I CERTIFY THIS SURVEY TO BE CORRECT TO THE BEST OF MY KNOWLEDGE.

*Donald C. Baker*

DONALD C. BAKER P.S. 6938  
 DATE: FEB. 15, 2018  
 FDB\KES  
 FILE NAME: WORK4\S-82-18

NOTE: VARIOUS SURVEYS BEGINNING WITH P. 10-618 USED A STONE FOR THIS CORNER. THIS STONE HAD NO MARKINGS ON IT AND WAS PROVED NOT BE THE CORNER. A 5/8" REBAR WAS SET AT THE CORRECT POSITION IN P. 14-393.



HARDY TOWNSHIP  
 S.W. QTR. SECTION 4  
 T-9 N; R-6 W  
 HOLMES COUNTY, OHIO

SURVEYED FOR: ANDREW SCHLABACH

201800112174  
 B: 19 P: 3546  
 FILED FOR RECORD IN  
 HOLMES COUNTY, OH  
 ANITA HALL, COUNTY RECORDER  
 08/23/2018 09:59 AM  
 SMALL PLAT, 40.00  
 PAGES: 1

ORV 264 PG 7321

ANDREW A. and SADIE SCHLABACH  
 D.V. 232-548  
 PPN 0601188002  
 3.972 AC.

JACOB J. and JOANN COBLENTZ  
 D.V. 228-105

APPROVED FOR TRANSFER ONLY  
 NO SUBDIVISION PLAT REQUIRED  
 (O.R.C. 711.001 & 711.131)  
 Lot(s) not for building unless  
 approved by Board of Health.



HOLMES CO. PLANNING COMMISSION

By: *[Signature]* Date: 8/22/18

PLAT APPROVED

8/21/2018 TO



BAKER SURVEYING, LLC  
 138 N. CLAY STREET  
 MILLERSBURG, OHIO 44654  
 PH. 330-674-4788  
 FAX 330-674-6027