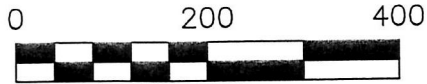




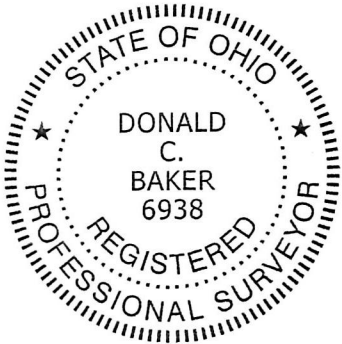
PRAIRIE TOWNSHIP
S.E. QTR. SECTION 12
T-13 N; R-13 W
HOLMES COUNTY, OHIO

SURVEYED FOR: JONAS HOCHSTETLER



SCALE: 1"=200'

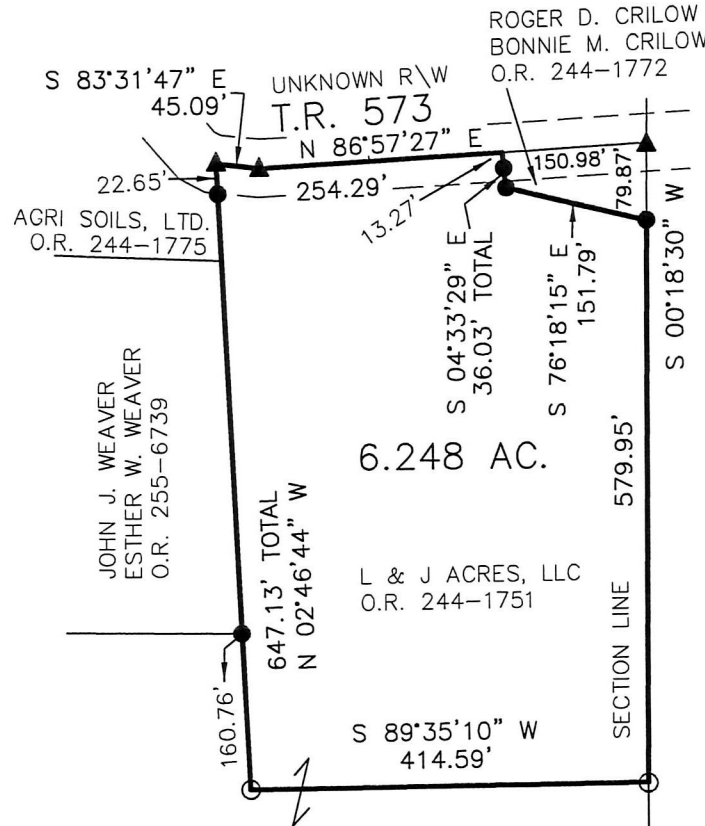
- ▲ R.R. SPIKE FOUND
- 5/8" REBAR FOUND
UNLESS OTHERWISE NOTED
- 5/8" REBAR SET WITH I.D. CAP
I.D. CAP MARKED "BAKER 6938"



I CERTIFY THIS SURVEY TO BE CORRECT
TO THE BEST OF MY KNOWLEDGE.

Donald C. Baker
DONALD C. BAKER P.S. 6938

DATE: APRIL 17, 2017
FDB\DCB
FILE NAME: WORK4\S-164-17



PLAT APPROVED

6/23/2017

201700105921
B: 19 P: 3244
FILED FOR RECORD IN
HOLMES COUNTY, OH
ANITA HALL, COUNTY RECORDER
07/05/2017 2:15 PM
SMALL PLAT - 40.00
PAGES: 1

ORV 260 PG 5499

APPROVED FOR TRANSFER ONLY
NO SUBDIVISION PLAT REQUIRED
(O.R.C. 711.001 & 711.131)
Lot(s) not for building unless
approved by Board of Health.
HOLMES CO. PLANNING COMMISSION
By: *[Signature]* Date: *[Signature]*

REFERENCES
O.R. VOL. 244 PAGE 1751
PLAT VOL. 2 PAGE 526
PLAT VOL. 7 PAGE 720
PLAT VOL. 19 PAGE 2308
BEARINGS FROM
PLAT VOL. 2 PAGE 526

SALT CREEK TWP.
T-14 N; R-12 W



BAKER SURVEYING, LLC
138 N. CLAY STREET
MILLERSBURG, OHIO 44654
PH. 330-674-4788
FAX 330-674-6027

12
13