

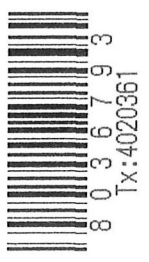
ORV 260 PGS 2522
2524

APPROVED FOR TRANSFER ONLY
NO SUBDIVISION PLAT REQUIRED
(O.R.C. 711.001 & 711.131)
Lot(s) not for building unless
approved by Board of Health.

HCP
HOLMES CO. PLANNING COMMISSION
By _____ Date 7/17/17

HARDY TOWNSHIP
S.W. QTR. SECTION 14
N.W. QTR. SECTION 17
T-9 N; R-6 W
HOLMES COUNTY, OHIO

SURVEYED FOR: ALVIN HERSHBERGER



0 200 400



SCALE: 1"=200'

- STONE FOUND
- ▲ R.R. SPIKE FOUND
- 5/8" REBAR FOUND
- UNLESS OTHERWISE NOTED
- △ R.R. SPIKE SET
- 5/8" REBAR SET WITH I.D. CAP
- I.D. CAP MARKED "BAKER 6938"



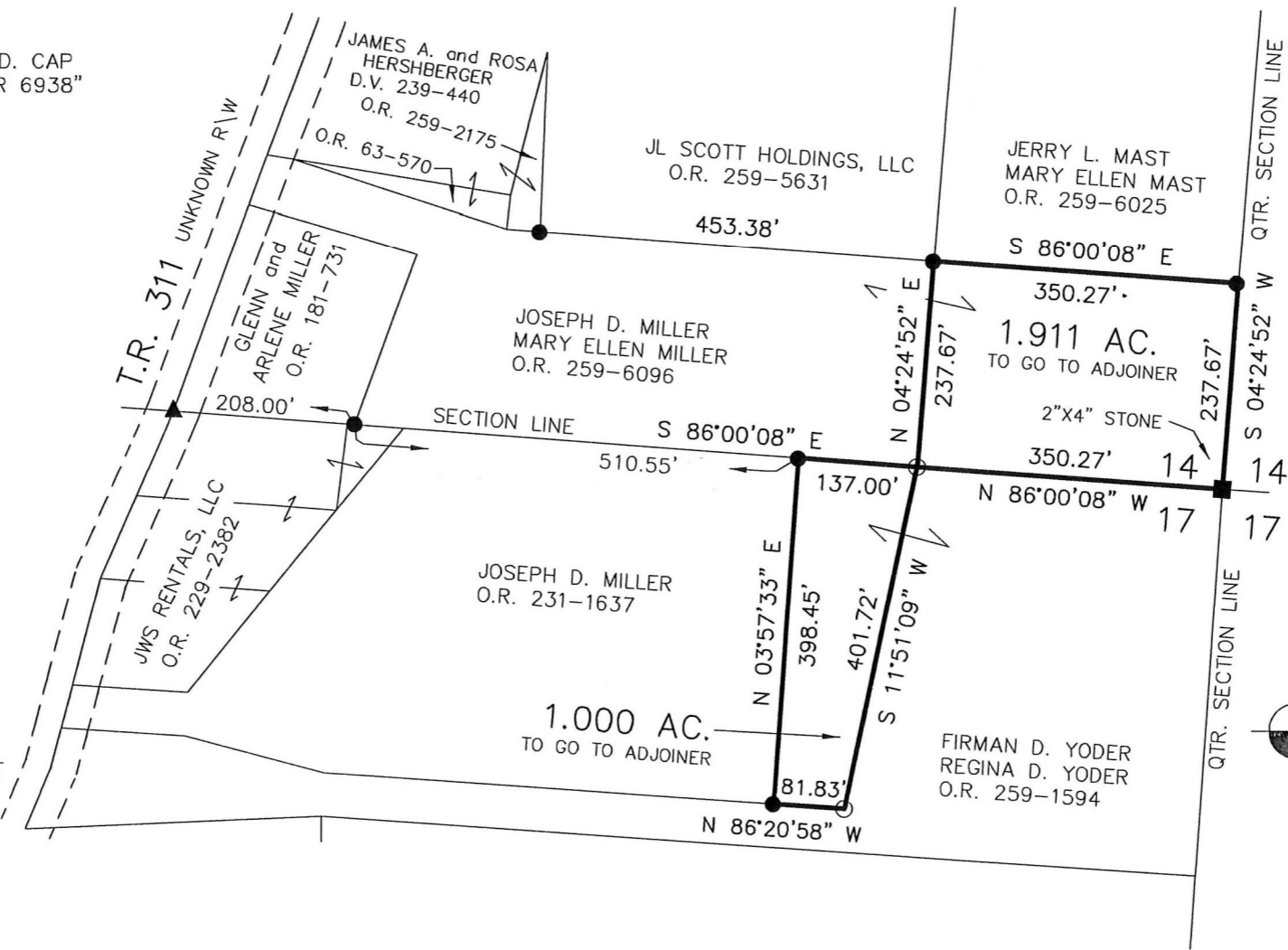
PLAT APPROVED

S/12/2017 MB

I CERTIFY THIS SURVEY TO BE CORRECT
TO THE BEST OF MY KNOWLEDGE.

Donald C. Baker
DONALD C. BAKER P.S. 6938

DATE: APRIL 11, 2017
CJG\JPD\JNG
FILE NAME: WORK4\S-336-16
#166-17



- REFERENCES
- O.R. VOL. 231 PAGE 1637
 - O.R. VOL. 259 PAGE 1594
 - O.R. VOL. 259 PAGE 5631
 - O.R. VOL. 259 PAGE 6025
 - O.R. VOL. 259 PAGE 6096
 - PLAT VOL. 19 PAGE 438
 - PLAT VOL. 19 PAGE 1995
 - PLAT VOL. 19 PAGE 3154
 - BEARINGS FROM
PLAT VOL. 19 PAGE 3154



BAKER SURVEYING, LLC
138 N. CLAY STREET
MILLERSBURG, OHIO 44654
PH. 330-674-4788
FAX 330-674-6027