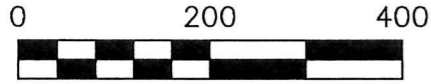


PAIN TOWNSHIP  
N.W. QTR. SECTION 31  
T-15 N; R-11 W  
HOLMES COUNTY, OHIO

SURVEYED FOR: MOSE KEIM



SCALE: 1"=200'

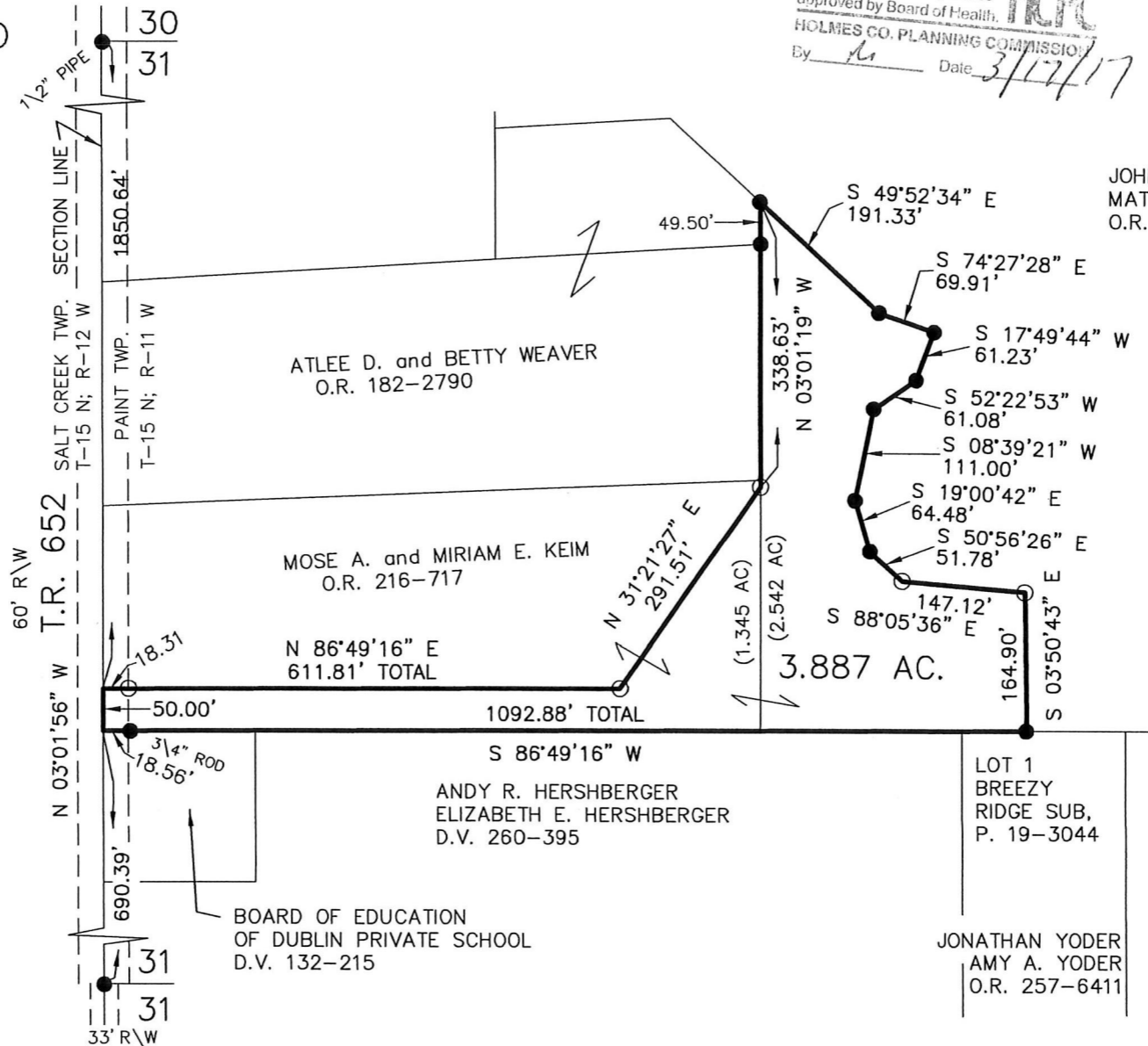
- 5/8" REBAR FOUND  
UNLESS OTHERWISE NOTED
- 5/8" REBAR SET WITH I.D. CAP  
I.D. CAP MARKED "BAKER 6938"

REFERENCES

- DEED VOL. 132 PAGE 215
- O.R. VOL. 182 PAGE 2790
- O.R. VOL. 216 PAGE 717
- PLAT VOL. 8 PAGE 860
- PLAT VOL. 10 PAGE 413
- PLAT VOL. 10 PAGE 790
- PLAT VOL. 19 PAGE 3044
- PLAT VOL. 16 PAGE 691
- BEARINGS FROM  
PLAT VOL. 10 PAGE 790



BAKER SURVEYING, LLC  
138 N. CLAY STREET  
MILLERSBURG, OHIO 44654  
PH. 330-674-4788  
FAX 330-674-6027



APPROVED FOR TRANSFER ONLY  
NO SUBDIVISION PLAT REQUIRED  
(O.R.C. 711.001 & 711.131)  
Lot(s) not for building unless  
approved by Board of Health.  
HOLMES CO. PLANNING COMMISSION  
By AM Date 3/17/17

JOHN J. YODER  
MATTIE YODER  
O.R. 6-587



I CERTIFY THIS SURVEY TO BE CORRECT  
TO THE BEST OF MY KNOWLEDGE.

Donald C. Baker  
DONALD C. BAKER P.S. 6938  
DATE: FEBRUARY 9, 2017  
FDB\KES  
FILE NAME: WORK4\S-36-17\DCB

JONATHAN YODER  
AMY A. YODER  
O.R. 257-6411

PLAT APPROVED

3/16/2017 M

201700104393  
B: 19 P: 3176  
FILED FOR RECORD IN  
HOLMES COUNTY, OH  
ANITA HALL, COUNTY RECORDER  
03/27/2017 10:44 AM  
SMALL PLAT . 40.00  
PAGES: 1  
ORV 259 PG 5192

