

SCALE: 1"=60'

- 5/8" REBAR FOUND UNLESS OTHERWISE NOTED
- 5/8" REBAR SET WITH I.D. CAP I.D. CAP MARKED "BAKER 6938"



SALT CREEK TOWNSHIP
 FRACTIONAL SECTION 12
 T-14 N; R-12 W
 HOLMES COUNTY, OHIO

SURVEYED FOR: KEN HOSTETLER

REFERENCES

- O.R. VOL. 255 PAGE 2565
- O.R. VOL. 255 PAGE 4419
- PLAT VOL. 19 PAGE 527
- PLAT VOL. 19 PAGE 2816
- BEARINGS FROM PLAT VOL. 19 PAGE 2816

VILLAGE OF MT. HOPE
 O.L. 86

201700103843

B: 19 P: 3156

FILED FOR RECORD IN
 HOLMES COUNTY, OH
 ANITA HALL, COUNTY RECORDER
 02/15/2017 3:13 PM
 SMALL PLAT . 40.00

ORV 259 Pg 2437

APPROVED FOR TRANSFER ONLY
 NO SUBDIVISION PLAT REQUIRED

(O.R.C. 711.001 & 711.131)

Lot(s) not for building unless

approved by Board of Health.



HOLMES CO. PLANNING COMMISSION

By: *[Signature]* Date: 2-3-17



I CERTIFY THIS SURVEY TO BE CORRECT TO THE BEST OF MY KNOWLEDGE.

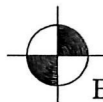
[Signature]

DONALD C. BAKER P.S. 6938

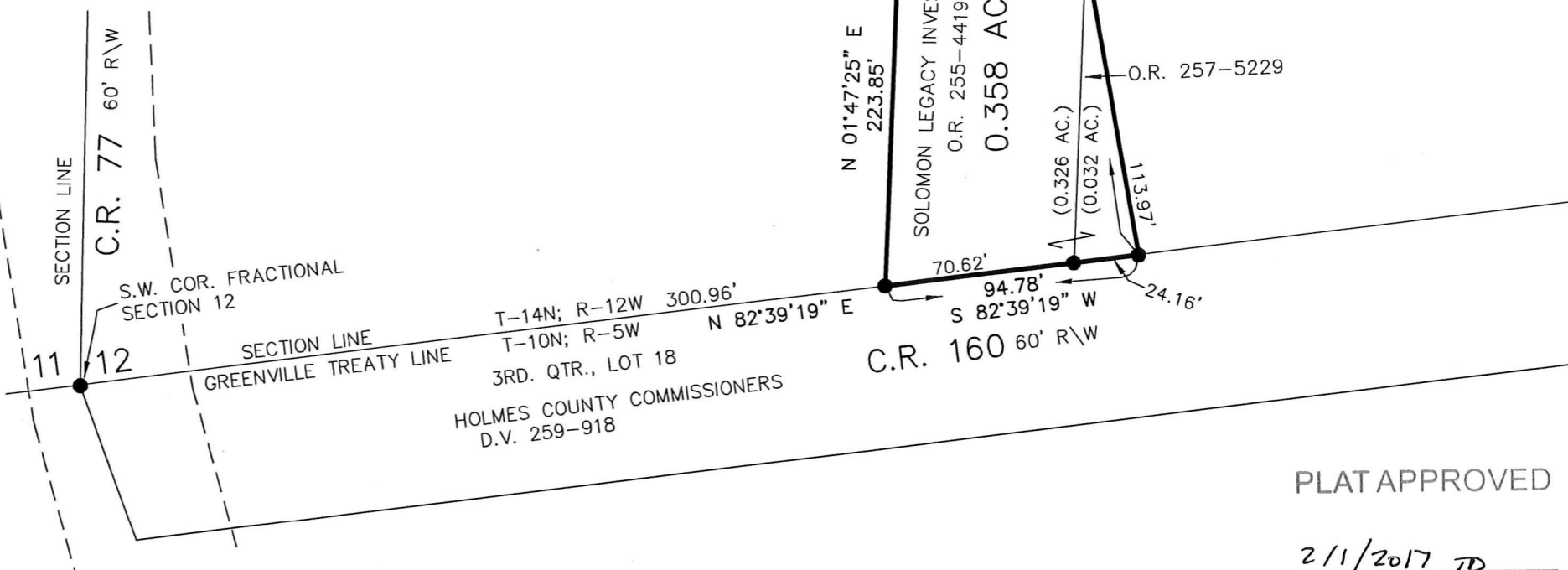
DATE: JANUARY 9, 2017

KES\JPD

FILE NAME: WORK4\S-283-16



BAKER SURVEYING, LLC
 138 N. CLAY STREET
 MILLERSBURG, OHIO 44654
 PH. 330-674-4788
 FAX 330-674-6027



ERVIN S. YODER, CO-TRUSTEE
 SARA J. YODER, CO-TRUSTEE
 O.R. 255-2565

PLAT APPROVED

2/1/2017 TD