

RIPLEY TOWNSHIP
S.W. QTR. SECTION 3
T-17 N; R-14 W
HOLMES COUNTY, OHIO

SURVEYED FOR: CHARLES MULHALL

0 200 400

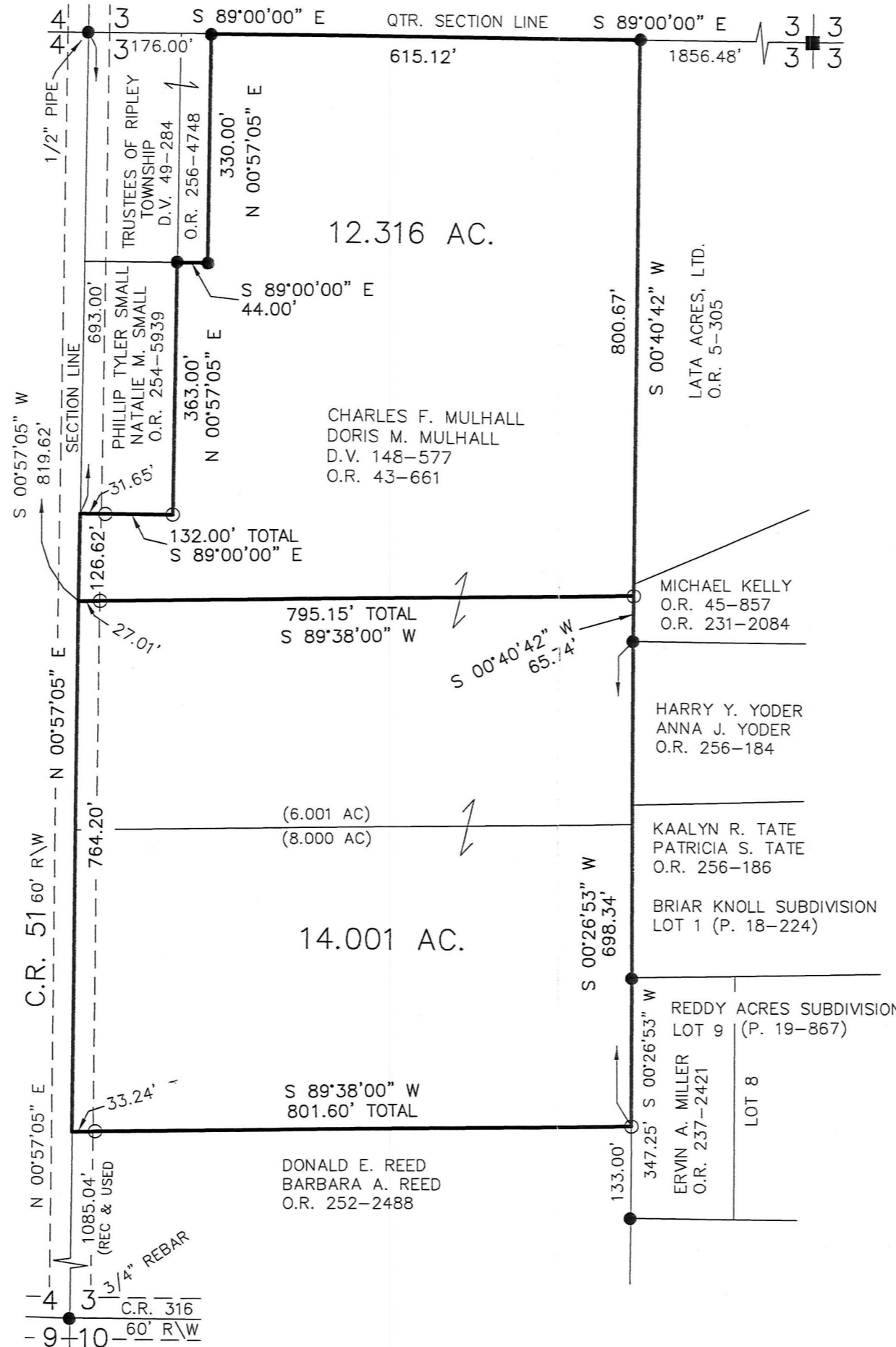


SCALE: 1"=200'

- STONE FOUND
- 5/8" REBAR FOUND UNLESS OTHERWISE NOTED
- 5/8" REBAR SET WITH I.D. CAP I.D. CAP MARKED "BAKER 6938"



BAKER SURVEYING, LLC
138 N. CLAY STREET
MILLERSBURG, OHIO 44654
PH. 330-674-4788
FAX 330-674-6027



APPROVED FOR TRANSFER ONLY
NO SUBDIVISION PLAT REQUIRED

(O.R.C. 711.001 & 711.131)
Lot(s) not for building unless approved by Board of Health.



HOLMES CO. PLANNING COMMISSION
By: *[Signature]* Date: 12-20-16

201600103015

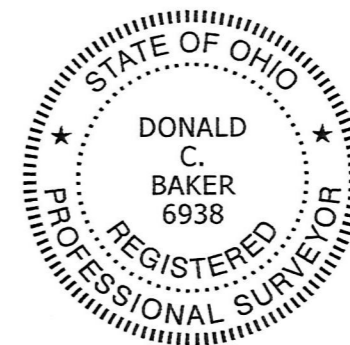
B: 19 P: 3135

FILED FOR RECORD IN
HOLMES COUNTY, OH
ANITA HALL, COUNTY RECORDER
12/21/2016 11:05 AM
SMALL PLAT . 40.00
PAGES: 1

ORV 258 Pgs 5625

REFERENCES

- O.R. VOL. 5 PAGE 305
- O.R. VOL. 43 PAGE 661
- O.R. VOL. 252 PAGE 2488
- O.R. VOL. 254 PAGE 5939
- O.R. VOL. 256 PAGE 4748
- PLAT VOL. 16 PAGE 671
- PLAT VOL. 18 PAGE 224
- PLAT VOL. 19 PAGE 1875
- PLAT VOL. 19 PAGE 867
- PLAT VOL. 19 PAGE 2989
- BEARINGS FROM
PLAT VOL. 19 PAGE 2989



I CERTIFY THIS SURVEY TO BE CORRECT TO THE BEST OF MY KNOWLEDGE.

[Signature]

DONALD C. BAKER P.S. 6938

DATE: AUG. 10, 2016

FDB\CJG

FILE NAME: WORK4\S-357-16

PLAT APPROVED

12/19/2016