

WALNUT CREEK TOWNSHIP
S.E. QTR. SECTION 18
N.E. QTR. SECTION 23
T-9 N; R-5 W
HOLMES COUNTY, OHIO

SURVEYED FOR: MERVIN KLINE

0 200 400



SCALE: 1"=200'

- STONE FOUND
- ▲ R.R. SPIKE FOUND
- 5/8" REBAR FOUND UNLESS OTHERWISE NOTED
- 5/8" REBAR SET WITH I.D. CAP I.D. CAP MARKED "BAKER 6938"

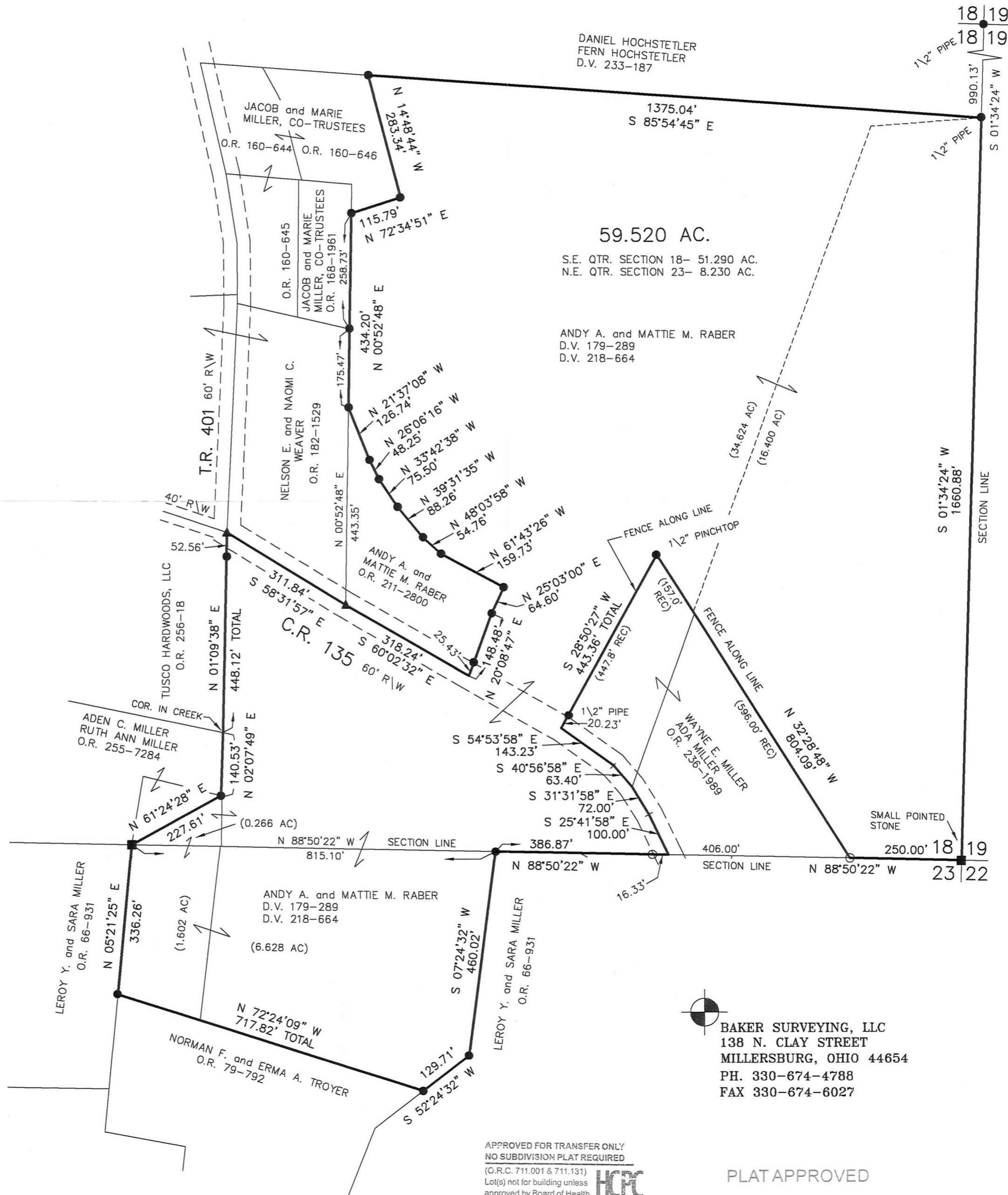
REFERENCES

- DEED VOL. 218 PAGE 664
- DEED VOL. 233 PAGE 187
- O.R. VOL. 236 PAGE 1989
- PLAT VOL. 2 PAGE 327
- PLAT VOL. 3 PAGE 41 B
- PLAT VOL. 18 PAGE 4
- PLAT VOL. 19 PAGE 936
- PLAT VOL. 12 PAGE 231
- PLAT VOL. 19 PAGE 421
- PLAT VOL. 19 PAGE 1536
- PLAT VOL. 18 PAGE 822
- PLAT VOL. 14 PAGE 927
- PLAT VOL. 12 PAGE 179
- BEARINGS FROM PLAT VOL. 18 PAGE 4



I CERTIFY THIS SURVEY TO BE CORRECT TO THE BEST OF MY KNOWLEDGE.

Donald C. Baker
DONALD C. BAKER P.S. 6938
DATE: NOV. 7, 2016
CJG\JPD
FILE NAME: WORK4\S-547-16



APPROVED FOR TRANSFER ONLY
NO SUBDIVISION PLAT REQUIRED
(G.R.C. 711.001 & 711.131)
Lot(s) not for building unless approved by Board of Health.
HOLMES CO. PLANNING COMMISSION
By *[Signature]* Date 11-21-16

BAKER SURVEYING, LLC
138 N. CLAY STREET
MILLERSBURG, OHIO 44654
PH. 330-674-4788
FAX 330-674-6027

PLAT APPROVED

11/18/2016 TD