

ORV 258 Pg 4145

RIPLEY TOWNSHIP  
 S.W. QTR. SECTION 18  
 T-17 N; R-14 W  
 HOLMES COUNTY, OHIO

SURVEYED FOR: SALLY W. EBY

0 300 600



SCALE: 1"=300'

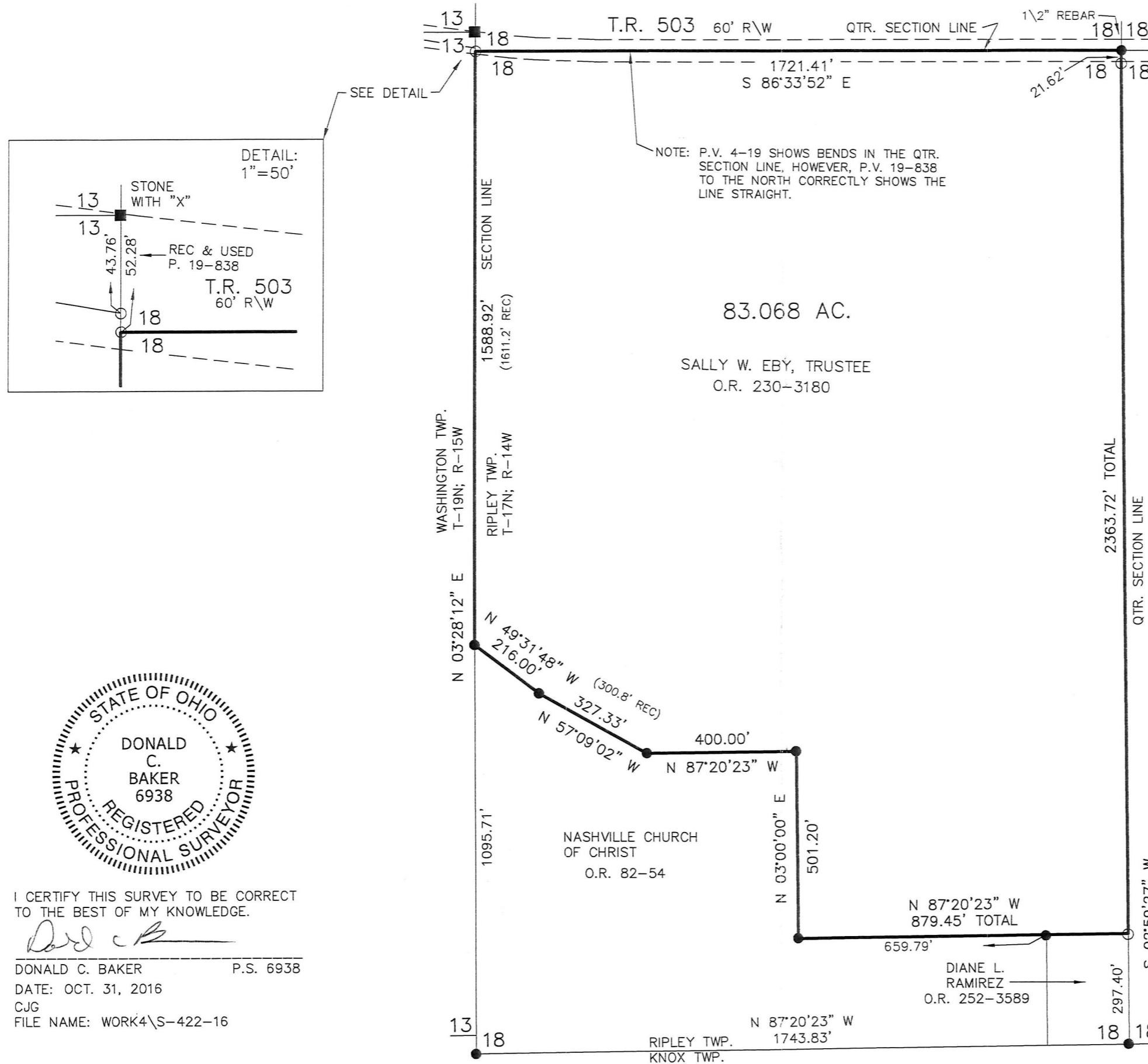
- STONE FOUND
- 5/8" REBAR FOUND UNLESS OTHERWISE NOTED
- 5/8" REBAR SET WITH I.D. CAP I.D. CAP MARKED "BAKER 6938"

REFERENCES

- O.R. VOL. 230 PAGE 3180
- O.R. VOL. 82 PAGE 54
- O.R. VOL. 252 PAGE 3589
- PLAT VOL. 4 PAGE 19
- PLAT VOL. 12 PAGE 88
- PLAT VOL. 19 PAGE 1185
- PLAT VOL. 17 PAGE 730
- PLAT VOL. 14 PAGE 528
- PLAT VOL. 19 PAGE 838
- BEARINGS FROM PLAT VOL. 17 PAGE 730



BAKER SURVEYING, LLC  
 138 N. CLAY STREET  
 MILLERSBURG, OHIO 44654  
 PH. 330-674-4788  
 FAX 330-674-6027



APPROVED FOR TRANSFER ONLY  
 NO SUBDIVISION PLAT REQUIRED  
 (O.R.C. 711.001 & 711.131)  
 Lot(s) not for building unless  
 approved by Board of Health  
 HOLMES CO. PLANNING COMMISSION  
 By: [Signature] Date: 11-15-16



I CERTIFY THIS SURVEY TO BE CORRECT TO THE BEST OF MY KNOWLEDGE.

[Signature]  
 DONALD C. BAKER P.S. 6938  
 DATE: OCT. 31, 2016  
 CJG  
 FILE NAME: WORK4\S-422-16

PLAT APPROVED

11/10/2016 TD