



SCALE: 1"=200'

- ▲ R.R. SPIKE FOUND
- 5/8" REBAR FOUND UNLESS OTHERWISE NOTED
- 5/8" REBAR SET WITH I.D. CAP I.D. CAP MARKED "BAKER 6938"

REFERENCES

- DEED VOL. 205 PAGE 105
- O.R. VOL. 254 PAGE 2949
- PLAT VOL. 15 PAGE 99
- PLAT VOL. 19 PAGE 1864
- PLAT VOL. 14 PAGE 117
- PLAT VOL. 19 PAGE 516
- PLAT VOL. 19 PAGE 2758
- PLAT VOL. 19 PAGE 257
- PLAT VOL. 15 PAGE 2918

BEARINGS FROM PLAT VOL. 19 PAGE 2918

WALNUT CREEK TOWNSHIP  
N.E. & S.E. QTRS. SECTION 5  
T-9 N; R-4 W  
HOLMES COUNTY, OHIO

SURVEYED FOR: MERLE BEACHY

201600101322

B: 19 P: 3055

FILED FOR RECORD IN  
HOLMES COUNTY, OH  
ANITA HALL, COUNTY RECORDER  
09/07/2016 3:10 PM  
SMALL PLAT . 40.00

ORV 257 P.4254

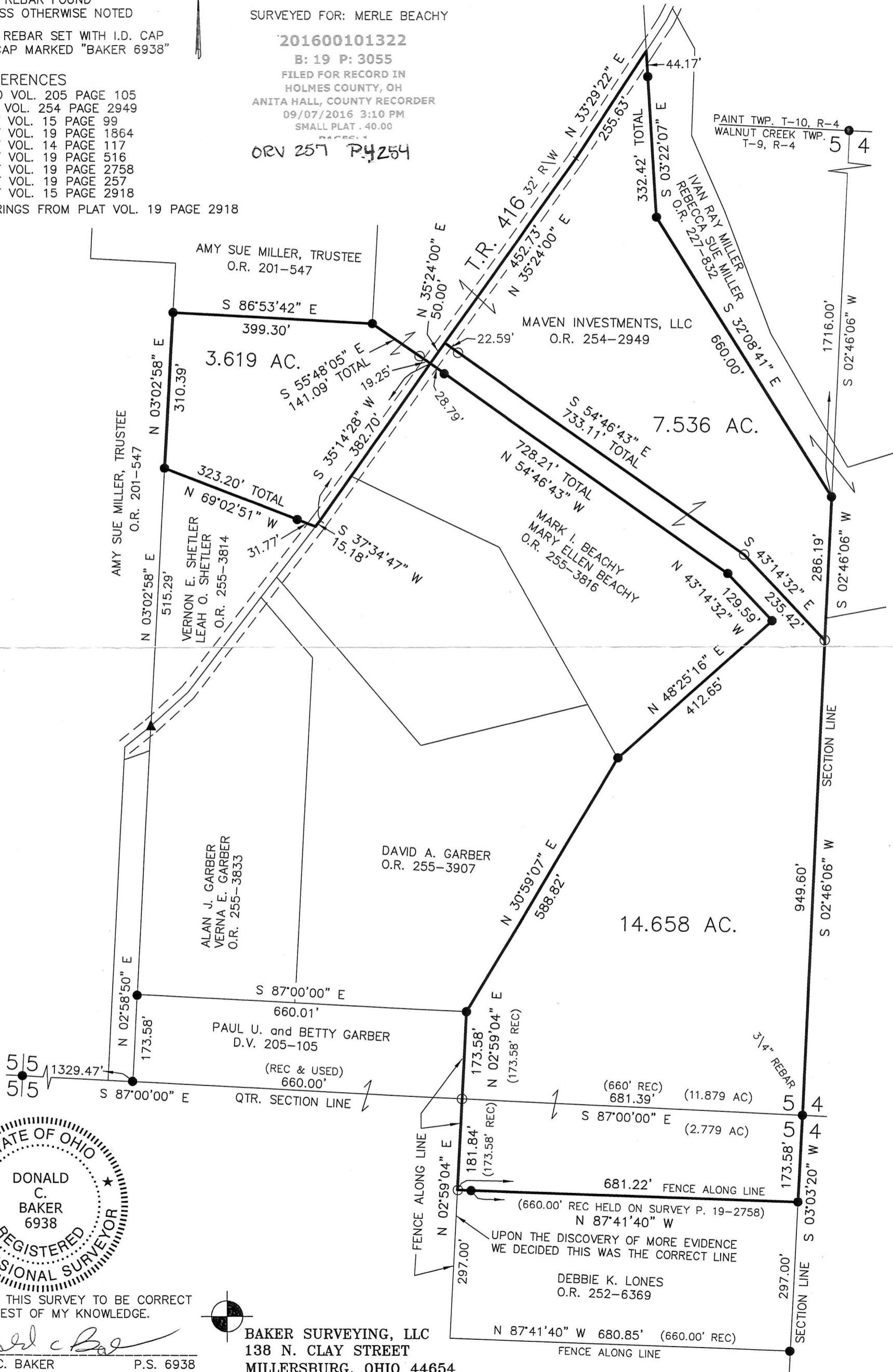
APPROVED FOR TRANSFER ONLY  
NO SUBDIVISION PLAT REQUIRED

(O.R.C. 711.001 & 711.131)  
Lot(s) not for building unless  
approved by Board of Health.



HOLMES CO. PLANNING COMMISSION

By WJ Date 8-3-16



I CERTIFY THIS SURVEY TO BE CORRECT TO THE BEST OF MY KNOWLEDGE.

*Donald C. Baker*  
DONALD C. BAKER P.S. 6938  
DATE: JULY 26, 2016  
CJG\FDB\JPD  
FILE NAME: WORK4\S-373-16

BAKER SURVEYING, LLC  
138 N. CLAY STREET  
MILLERSBURG, OHIO 44654  
PH. 330-674-4788  
FAX 330-674-6027

PLAT APPROVED

8/3/2016 TD