

SCALE: 1"=100'

- STONE FOUND
- 5/8" REBAR FOUND UNLESS OTHERWISE NOTED
- 5/8" REBAR SET WITH I.D. CAP I.D. CAP MARKED "BAKER 6938"

REFERENCES

- O.R. VOL. 204 PAGE 248
- O.R. VOL. 220 PAGE 3073
- O.R. VOL. 227 PAGE 2130
- PLAT VOL. 2 PAGE 461
- PLAT VOL. 12 PAGE 317
- PLAT VOL. 19 PAGE 1873
- BEARINGS FROM PLAT VOL. 19 PAGE 1873



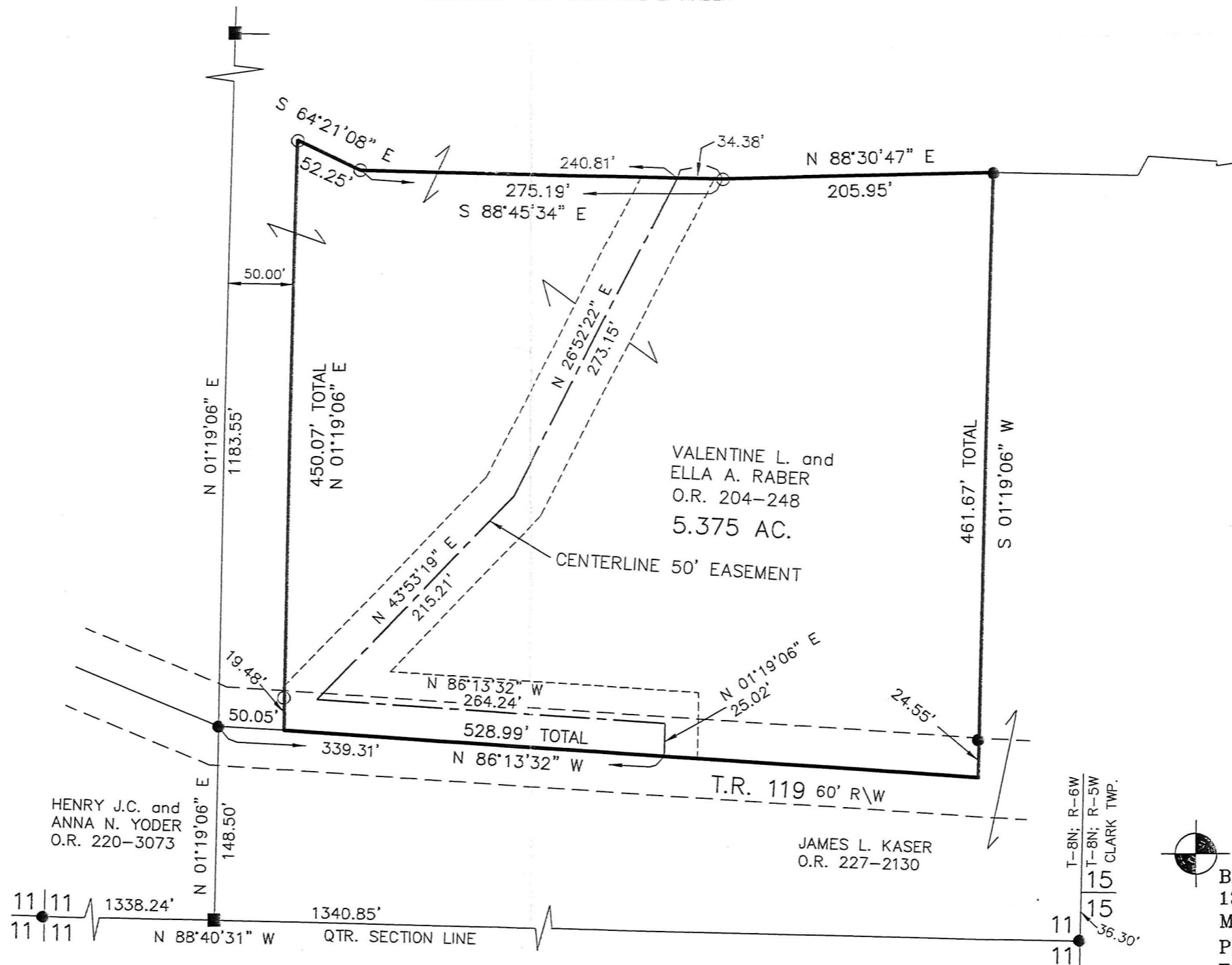
I CERTIFY THIS SURVEY TO BE CORRECT TO THE BEST OF MY KNOWLEDGE.

Donald C. Baker

DONALD C. BAKER P.S. 6938
 DATE: MAY 26, 2016
 FDB\JPD
 FILE NAME: WORK4\S-257-16

MECHANIC TOWNSHIP
 N.E. QTR. SECTION 11
 T-8 N; R-6 W
 HOLMES COUNTY, OHIO

SURVEYED FOR: VALENTINE L. RABER



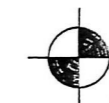
APPROVED FOR TRANSFER ONLY
 NO SUBDIVISION PLAT REQUIRED
 (O.R.C. 711.001 & 711.131)
 Lot(s) not for building unless approved by Board of Health.
 HCPC
 HOLMES CO. PLANNING COMMISSION
 By: *[Signature]* Date: 8-8-16

201600101208
 B: 19 P: 3049
 FILED FOR RECORD IN
 HOLMES COUNTY, OH
 ANITA HALL, COUNTY RECORDER
 08/31/2016 9:57 AM
 SMALL PLAT . 40.00

ORV 257 P3605

PLAT APPROVED

8/5/2016



BAKER SURVEYING, LLC
 138 N. CLAY STREET
 MILLERSBURG, OHIO 44654
 PH. 330-674-4788
 FAX 330-674-6027