



SCALE: 1"=200'

- 5/8" REBAR FOUND UNLESS OTHERWISE NOTED
- 5/8" REBAR SET WITH I.D. CAP I.D. CAP MARKED "BAKER 6938"

REFERENCES

DEED VOL. 176 PAGE 272
 O.R. VOL. 43 PAGE 631
 O.R. VOL. 254 PAGE 84
 O.R. VOL. 184 PAGE 3400
 PLAT VOL. 5 PAGE 40
 PLAT VOL. 2 PAGE 313
 PLAT VOL. 2 PAGE 313
 PLAT VOL. 17 PAGE 265
 BEARINGS FROM
 PLAT VOL. 2 PAGE 313



I CERTIFY THIS SURVEY TO BE CORRECT TO THE BEST OF MY KNOWLEDGE.

Donald C. Baker

DONALD C. BAKER P.S. 6938
 DATE: MAY 25, 2016
 FDB\JPD
 FILE NAME: WORK4\S-272-16

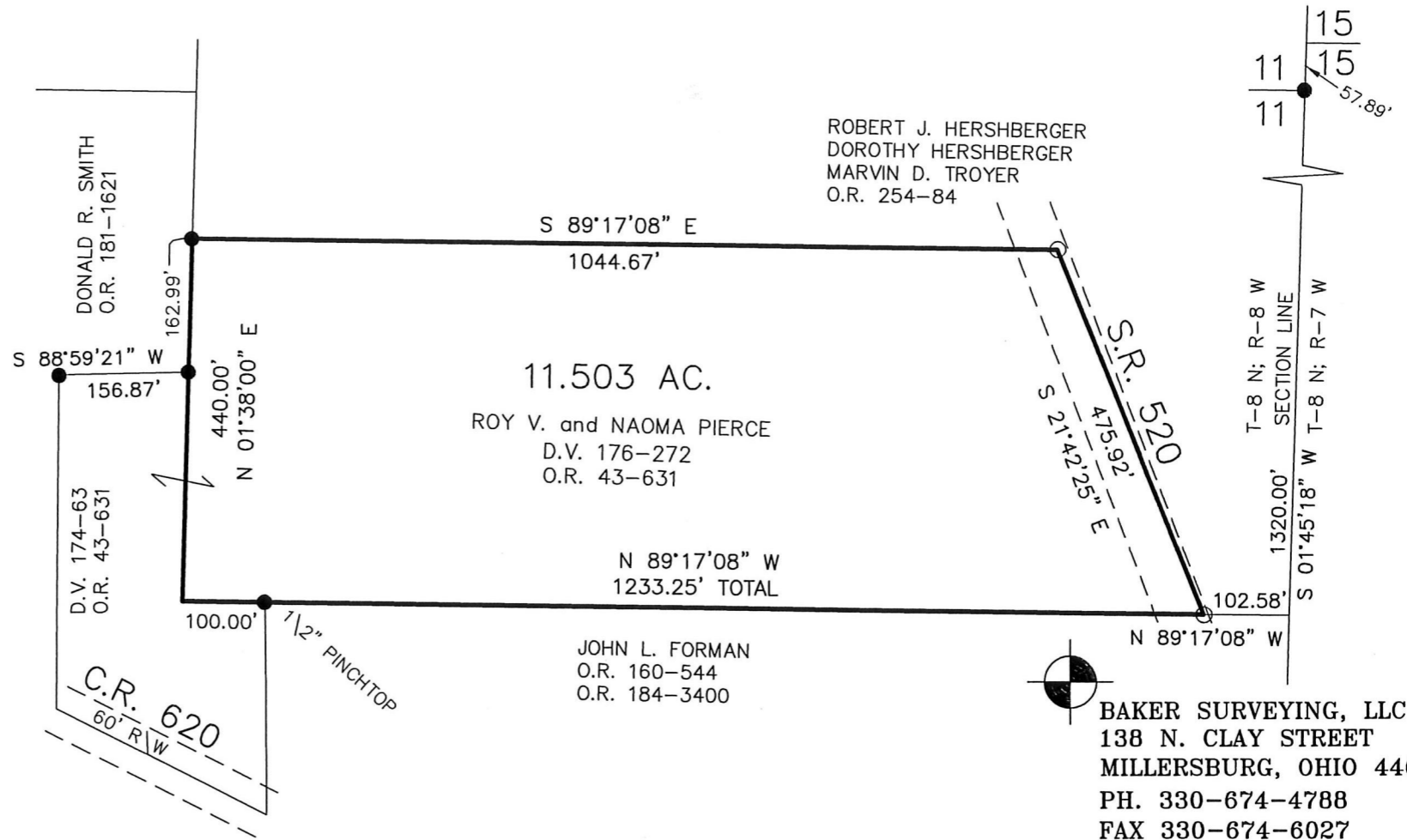
KILLBUCK TOWNSHIP
 S.E. QTR. SECTION 11
 T-8 N; R-8 W
 HOLMES COUNTY, OHIO

SURVEYED FOR: ROY PIERCE

201600100547
 B: 19 P: 3014
 FILED FOR RECORD IN
 HOLMES COUNTY, OH
 ANITA HALL, COUNTY RECORDER
 07/20/2016 9:53 AM
 SMALL PLAT . 40.00
 PAGES: 1

ORV 257 P57

APPROVED FOR TRANSFER ONLY
 NO SUBDIVISION PLAT REQUIRED
 (O.R.C. 711.001 & 711.131)
 Lot(s) not for building unless
 approved by Board of Health.
 HCPC
 HOLMES CO. PLANNING COMMISSION
 By *[Signature]* Date 7-19-16



JOHN L. FORMAN
 O.R. 160-544
 O.R. 184-3400



BAKER SURVEYING, LLC
 138 N. CLAY STREET
 MILLERSBURG, OHIO 44654
 PH. 330-674-4788
 FAX 330-674-6027

PLAT APPROVED

7/15/2016 TD