

201600099038

B: 19 P: 2948

FILED FOR RECORD IN
HOLMES COUNTY, OH
ANITA HALL, COUNTY RECORDER
04/13/2016 2:49 PM
SMALL PLAT . 40.00

PLAT APPROVED

4/15/2016 JD

PAGES: 1

ORV 255 P6604

RICHLAND TOWNSHIP
S.W. & S.E. QTRS. SECTION 25
T-8 N; R-9 W
HOLMES COUNTY, OHIO

SURVEYED FOR: ROGER HELMS



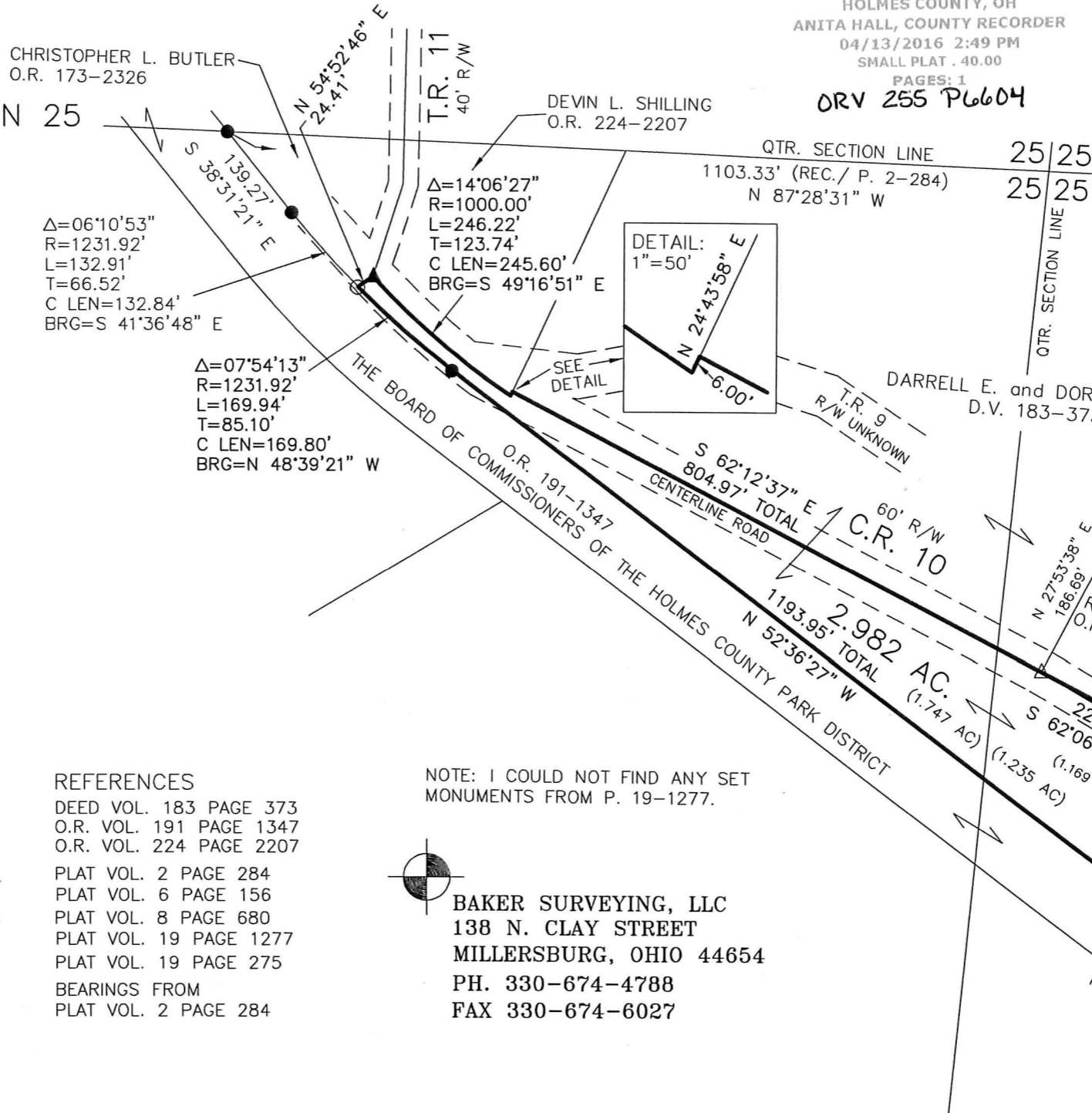
SCALE: 1"=200'

- ▲ R.R. SPIKE FOUND
- 5/8" REBAR FOUND
UNLESS OTHERWISE NOTED
- △ R.R. SPIKE SET
- 5/8" REBAR SET WITH I.D. CAP
I.D. CAP MARKED "BAKER 6938"



I CERTIFY THIS SURVEY TO BE CORRECT
TO THE BEST OF MY KNOWLEDGE.

Donald C. Baker
DONALD C. BAKER P.S. 6938
DATE: MARCH 14, 2016
KES\JPD
FILE NAME: WORK4\S-151-16



APPROVED
NO SUE
(O.R.C. 7
Lot(s) not
approved
HOLMES COUNTY
By: _____ Date: _____

ONLY
REQUIRED
CPC
COMMISSION

- REFERENCES
- DEED VOL. 183 PAGE 373
 - O.R. VOL. 191 PAGE 1347
 - O.R. VOL. 224 PAGE 2207
 - PLAT VOL. 2 PAGE 284
 - PLAT VOL. 6 PAGE 156
 - PLAT VOL. 8 PAGE 680
 - PLAT VOL. 19 PAGE 1277
 - PLAT VOL. 19 PAGE 275
 - BEARINGS FROM
PLAT VOL. 2 PAGE 284

NOTE: I COULD NOT FIND ANY SET
MONUMENTS FROM P. 19-1277.

BAKER SURVEYING, LLC
138 N. CLAY STREET
MILLERSBURG, OHIO 44654
PH. 330-674-4788
FAX 330-674-6027

