

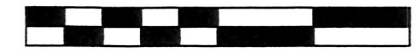
CLARK TOWNSHIP  
 S.E. QTR. SECTION 3  
 S.W. QTR. SECTION 2  
 T-8 N; R-5 W  
 HOLMES COUNTY, OHIO

SURVEYED FOR: ESTHER SHETLER

REFERENCES

DEED VOL. 263 PAGE 903	PLAT VOL. 2 PAGE 444
O.R. VOL. 21 PAGE 748	PLAT VOL. 7 PAGE 211
O.R. VOL. 192 PAGE 597	PLAT VOL. 19 PAGE 2792
O.R. VOL. 199 PAGE 3386	PLAT VOL. 19 PAGE 111
O.R. VOL. 197 PAGE 1971	PLAT VOL. 11 PAGE 93
	PLAT VOL. 13 PAGE 185
	BEARINGS FROM
	PLAT VOL. 19 PAGE 111

0 200 400



SCALE: 1"=200'

- STONE FOUND
- ▲ R.R. SPIKE FOUND
- 5/8" REBAR FOUND UNLESS OTHERWISE NOTED
- 5/8" REBAR SET WITH I.D. CAP I.D. CAP MARKED "BAKER 6938"

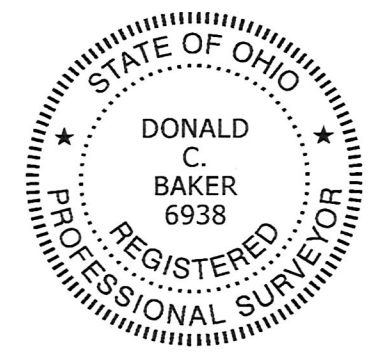
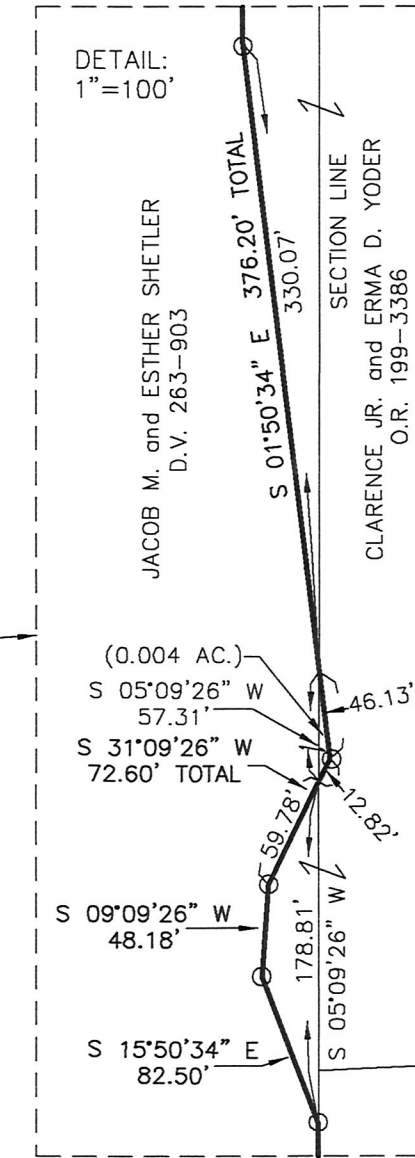
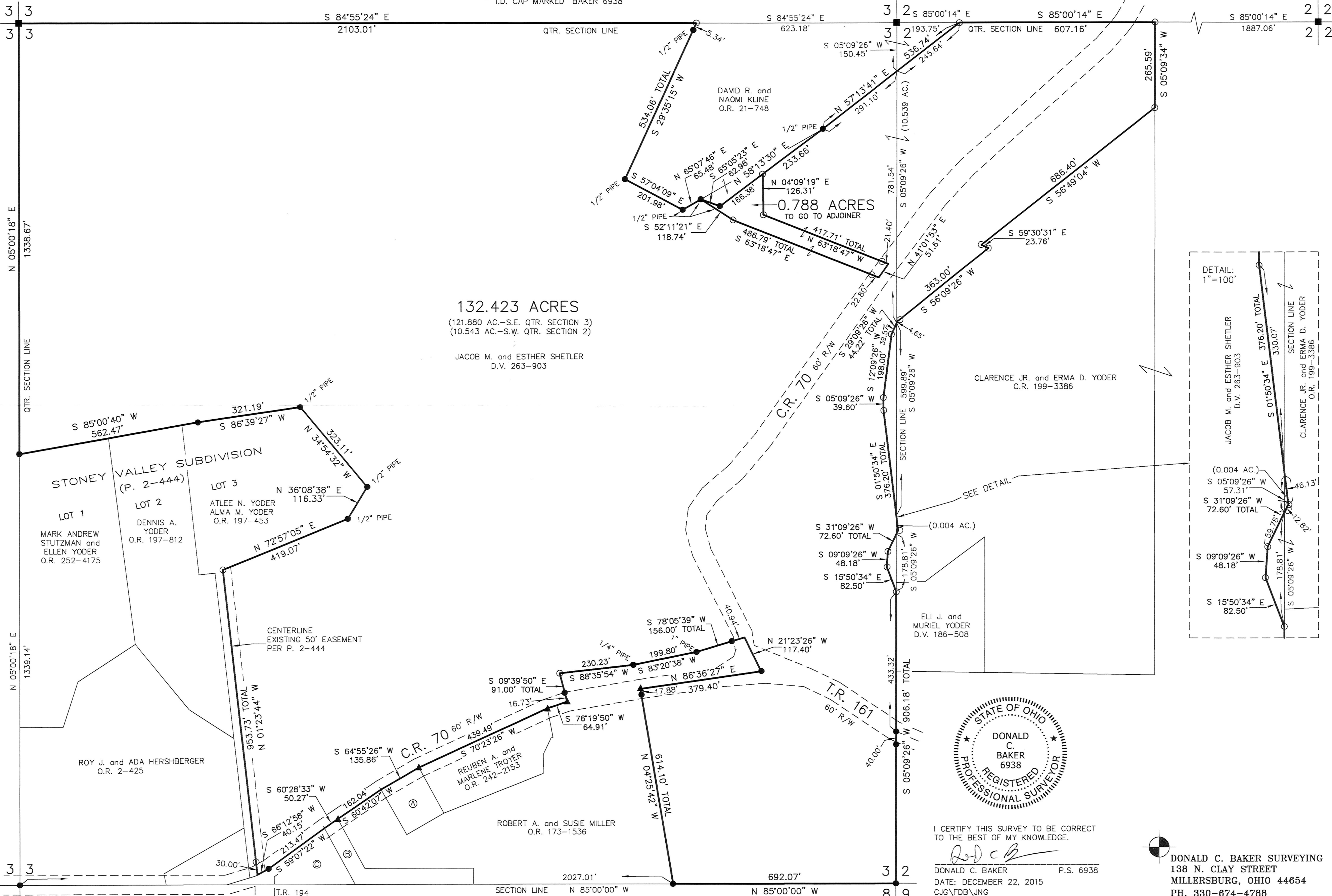
- Ⓐ ARLETTA K. HARMON  
D.V. 181-346  
O.R. 186-1347
- Ⓑ DAVID A. and KATHLEEN N. YODER  
O.R. 197-1971
- Ⓒ ELDON D. and SUSAN TROYER  
D.V. 273-76  
O.R. 192-597

201600097721

B: 19 P: 2884  
 FILED FOR RECORD IN  
 HOLMES COUNTY, OH  
 ANITA HALL, COUNTY RECORDER  
 01/19/2016 10:54 AM  
 PLAT MED - 43.20  
 PAGES: 1



DRV 255 P224



I CERTIFY THIS SURVEY TO BE CORRECT TO THE BEST OF MY KNOWLEDGE.  
 DONALD C. BAKER P.S. 6938  
 DATE: DECEMBER 22, 2015  
 C:\G\FDB\JNG  
 FILE NAME: WORK4\S-580-15\ALG

DONALD C. BAKER SURVEYING  
 138 N. CLAY STREET  
 MILLERSBURG, OHIO 44654  
 PH. 330-674-4788  
 FAX 330-674-6027

APPROVED FOR TRANSFER ONLY  
 NO SUBDIVISION PLAT REQUIRED  
 (O.R.C. 711.001 & 711.131)  
 Lots not for building unless approved by Board of Health  
 HOLMES CO. PLANNING COMMISSION  
 By: *ML* Date: 1/15/16

PLAT APPROVED  
 1/14/2016