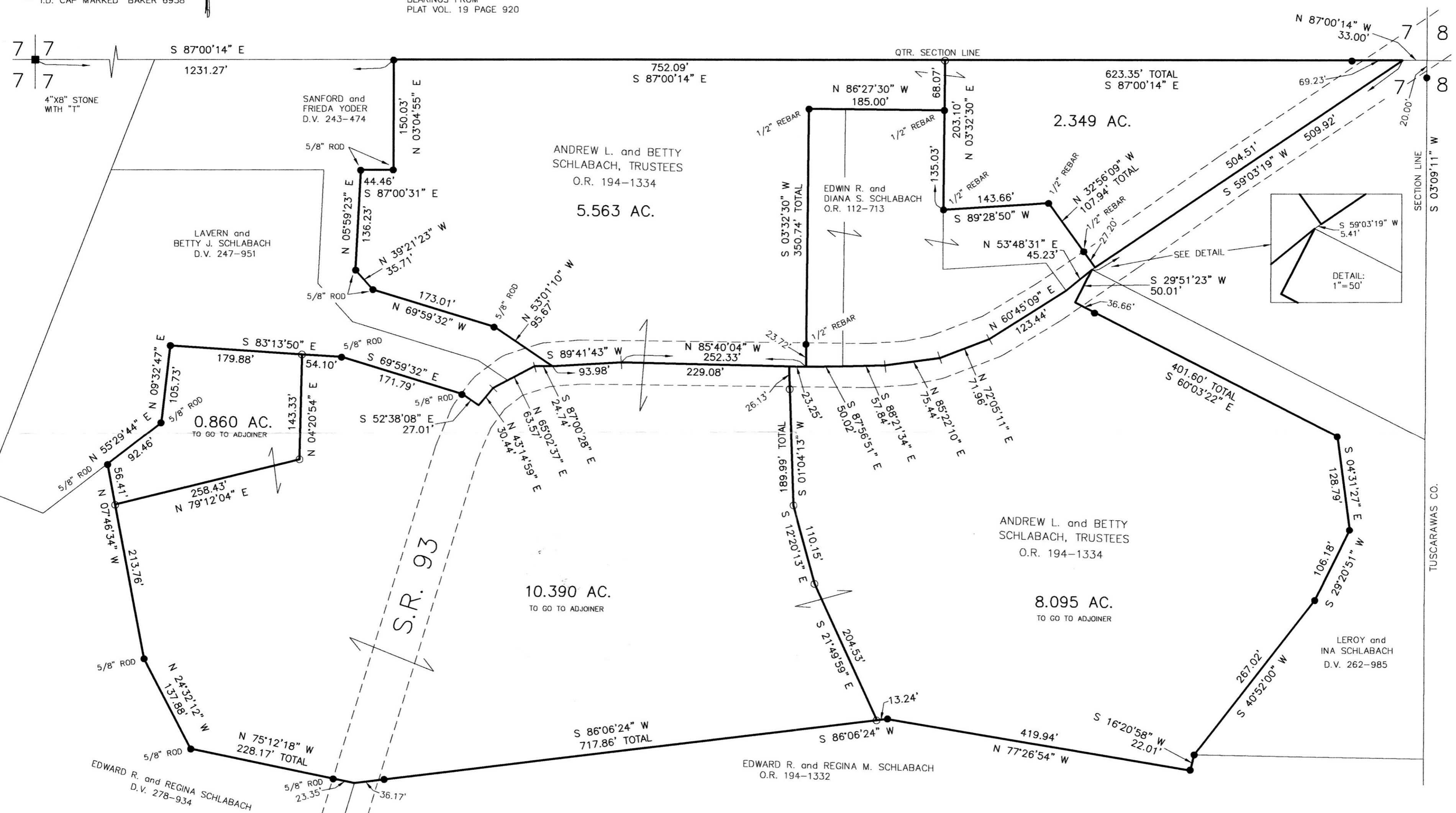


REFERENCES

DEED VOL. 243 PAGE 474	PLAT VOL. 5 PAGE 94
DEED VOL. 247 PAGE 951	PLAT VOL. 8 PAGE 295
DEED VOL. 262 PAGE 985	PLAT VOL. 12 PAGE 672
DEED VOL. 278 PAGE 934	PLAT VOL. 12 PAGE 219
O.R. VOL. 112 PAGE 713	PLAT VOL. 12 PAGE 475
O.R. VOL. 194 PAGE 1332	PLAT VOL. 14 PAGE 409
O.R. VOL. 194 PAGE 1334	PLAT VOL. 16 PAGE 474
	PLAT VOL. 19 PAGE 920
	PLAT VOL. 19 PAGE 833

BEARINGS FROM  
 PLAT VOL. 19 PAGE 920

CLARK TOWNSHIP  
 S.E. QTR. SECTION 7  
 T-8 N; R-4 W  
 HOLMES COUNTY, OHIO  
 SURVEYED FOR: LAVERN SCHLABACH



I CERTIFY THIS SURVEY TO BE CORRECT TO THE BEST OF MY KNOWLEDGE.  
  
 DONALD C. BAKER P.S. 6938  
 DATE: JUNE 29, 2015  
 FDB\JPD  
 FILE NAME: WORK4\S-272-15



APPROVED FOR TRANSFER ONLY  
 NO SUBDIVISION PLAT REQUIRED  
 (O.R.C. 711.001 & 711.131)  
 Lot(s) not for building unless approved by Board of Health  
 HOLMES CO. PLANNING COMMISSION  
 By: Date: 6/16/15

DONALD C. BAKER SURVEYING  
 138 N. CLAY STREET  
 MILLERSBURG, OHIO 44654  
 PH. 330-674-4788  
 FAX 330-674-6027

PLAT APPROVED  
 11/4/15