


SCALE: 1"=200'

- STONE FOUND
- 5/8" REBAR FOUND UNLESS OTHERWISE NOTED
- 5/8" REBAR SET WITH I.D. CAP I.D. CAP MARKED "BAKER 6938"

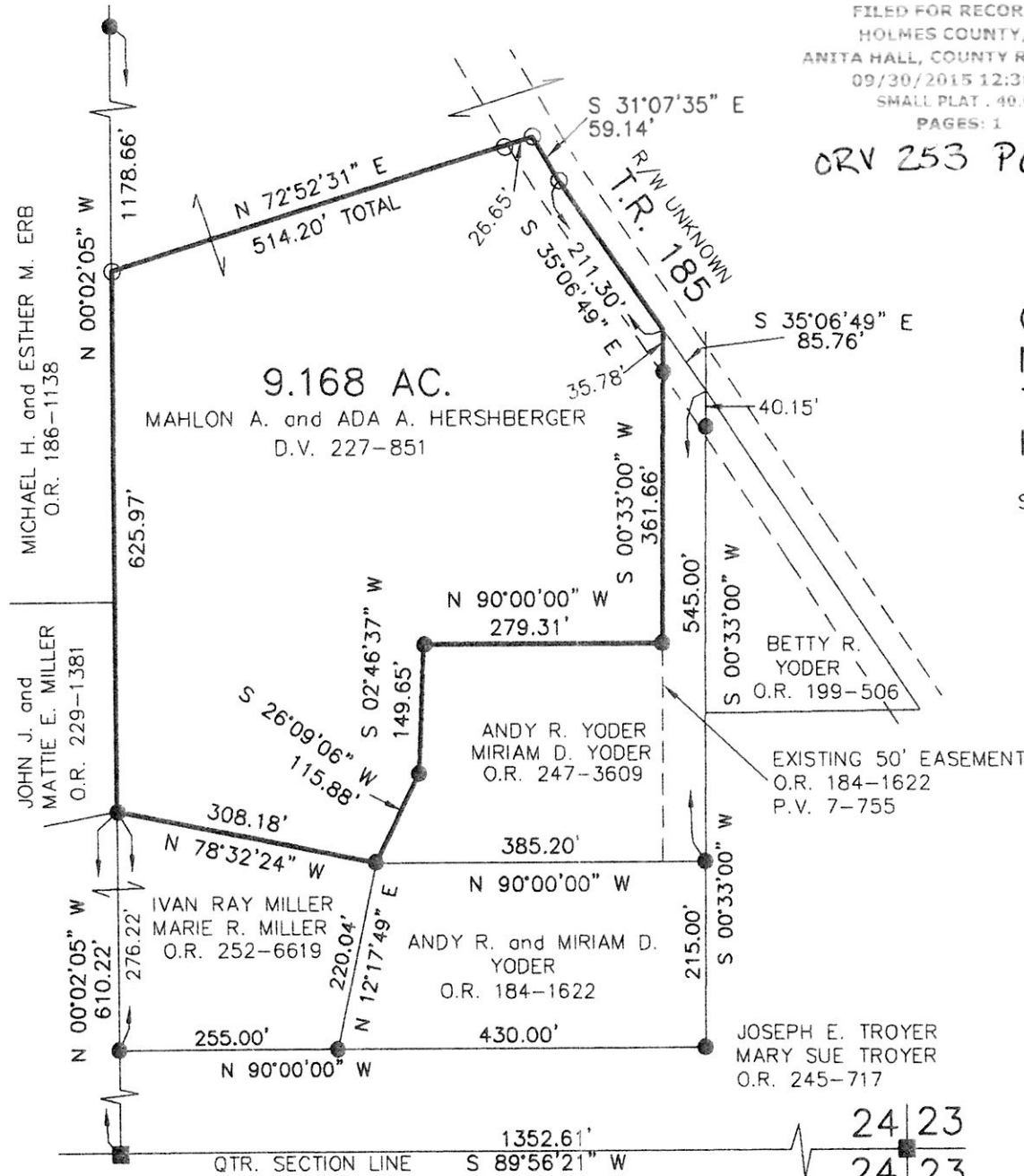
REFERENCES

DEED VOL. 227 PAGE 851
 O.R. VOL. 184 PAGE 1622
 O.R. VOL. 247 PAGE 3609
 PLAT VOL. 7 PAGE 755
 PLAT VOL. 19 PAGE 613
 PLAT VOL. 19 PAGE 1064
 PLAT VOL. 19 PAGE 1960
 PLAT VOL. 19 PAGE 1111
 PLAT VOL. 19 PAGE 2399
 BEARINGS FROM
 PLAT VOL. 19 PAGE 1111

 DONALD C. BAKER SURVEYING
 138 N. CLAY STREET
 MILLERSBURG, OHIO 44654
 PH. 330-674-4788
 FAX 330-674-6027

PLAT APPROVED

9/17/15



201500096048

B: 19 P: 2826

FILED FOR RECORD IN
 HOLMES COUNTY, OH
 ANITA HALL, COUNTY RECORDER
 09/30/2015 12:36 PM
 SMALL PLAT . 40.00
 PAGES: 1

ORV 253 P6618

APPROVED FOR TRANSFER ONLY
 NO SUBDIVISION PLAT REQUIRED
 (O.R.C. 711.001 & 711.131)
 Lot(s) not for building unless
 approved by Board of Health.
 HOLMES CO. PLANNING COMMISSION
 By DA Date 9-18-15



CLARK TOWNSHIP
 N.E. QTR. SECTION 24
 T-8 N; R-5 W
 HOLMES COUNTY, OHIO

SURVEYED FOR: MAHLON HERSHBERGER



I CERTIFY THIS SURVEY TO BE CORRECT TO THE BEST OF MY KNOWLEDGE.

Donald C. Baker

DONALD C. BAKER P.S. 6938
 DATE: OCT. 31, 2013
 KES\FDB
 FILE NAME: WORK4\S-431-13
 #396-15
 UPDATED NAMES: JULY 28, 2015

