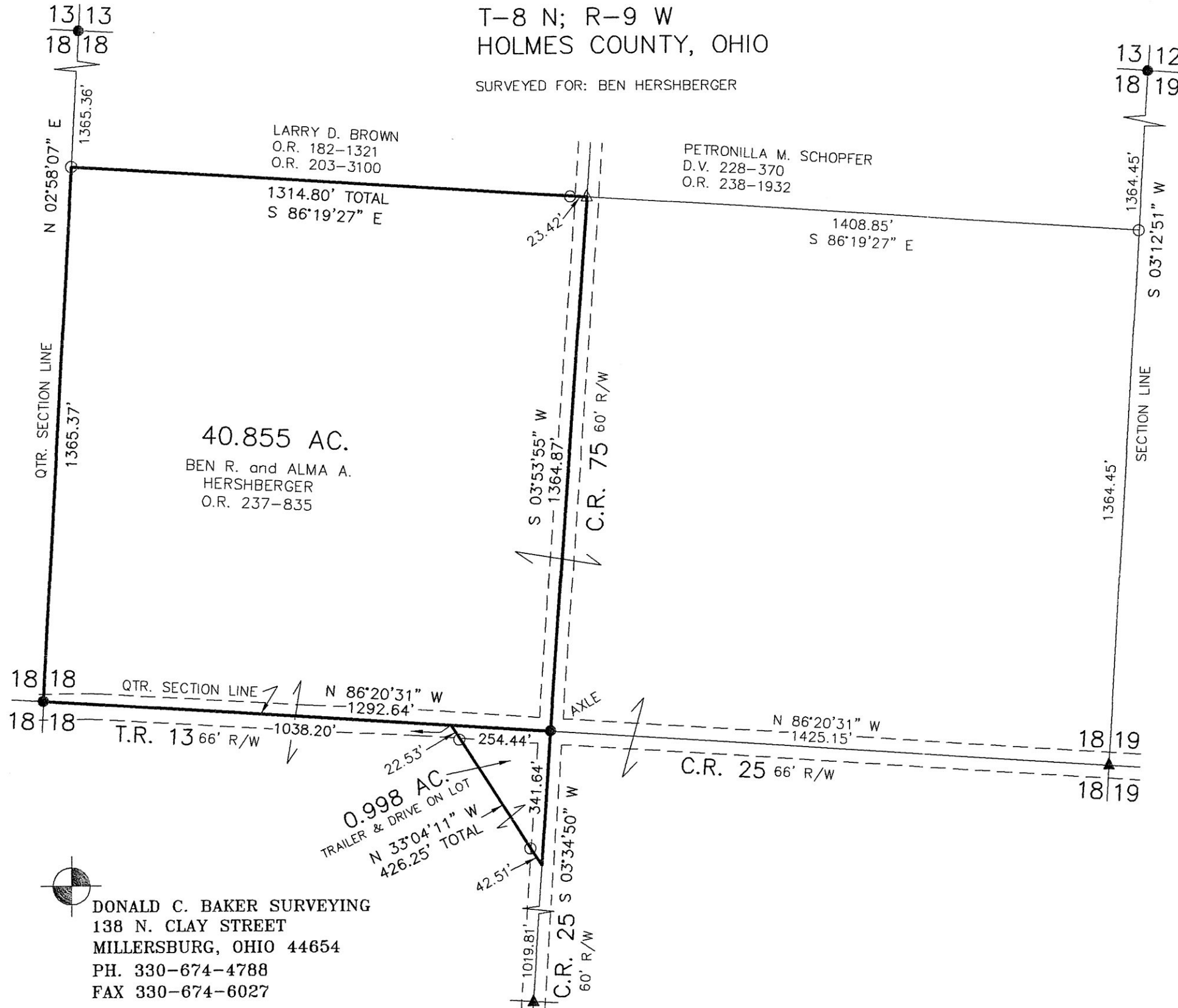


RICHLAND TOWNSHIP
 N.E. & S.E. QTRS. SECTION 18
 T-8 N; R-9 W
 HOLMES COUNTY, OHIO

SURVEYED FOR: BEN HERSHBERGER



201500095812

B: 19 P: 2819

FILED FOR RECORD IN
 HOLMES COUNTY, OH
 ANITA HALL, COUNTY RECORDER
 09/15/2015 1:08 PM
 SMALL PLAT . 40.00
 PAGES: 1

APPROVED FOR TRANSFER ONLY
 NO SUBDIVISION PLAT REQUIRED

(O.R.C. 711.001 & 711.131)

Lot(s) not for building unless

approved by Board of Health.

HOLMES CO. PLANNING COMMISSION

By W Date 8-24-15

ORV 253 Pg 5380

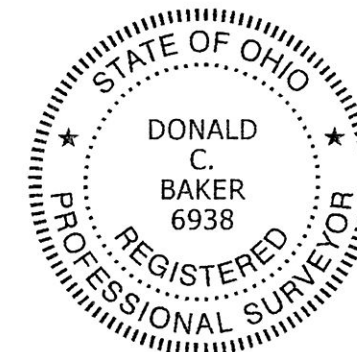


SCALE: 1"=300'

- ▲ R.R. SPIKE FOUND
- 5/8" REBAR FOUND
UNLESS OTHERWISE NOTED
- △ R.R. SPIKE SET
- 5/8" REBAR SET WITH I.D. CAP
I.D. CAP MARKED "BAKER 6938"

REFERENCES

- O.R. VOL. 203 PAGE 3100
- O.R. VOL. 237 PAGE 835
- O.R. VOL. 238 PAGE 1932
- PLAT VOL. 16 PAGE 446
- PLAT VOL. 19 PAGE 1400
- BEARINGS FROM
PLAT VOL. 19 PAGE 1400



I CERTIFY THIS SURVEY TO BE CORRECT
 TO THE BEST OF MY KNOWLEDGE.

Donald C. Baker

DONALD C. BAKER P.S. 6938

DATE: JULY 18, 2014

KES\AGG

FILE NAME: WORK4\S-334-14

DONALD C. BAKER SURVEYING
 138 N. CLAY STREET
 MILLERSBURG, OHIO 44654
 PH. 330-674-4788
 FAX 330-674-6027

PLAT APPROVED

8/21/2015