

0 30 60



SCALE: 1"=30'

● 5/8" REBAR FOUND
UNLESS OTHERWISE NOTED

○ DRILL HOLE SET

○ 5/8" REBAR SET WITH I.D. CAP
I.D. CAP MARKED "BAKER 6938"

ALLEY AND STREET VACATION PLAT

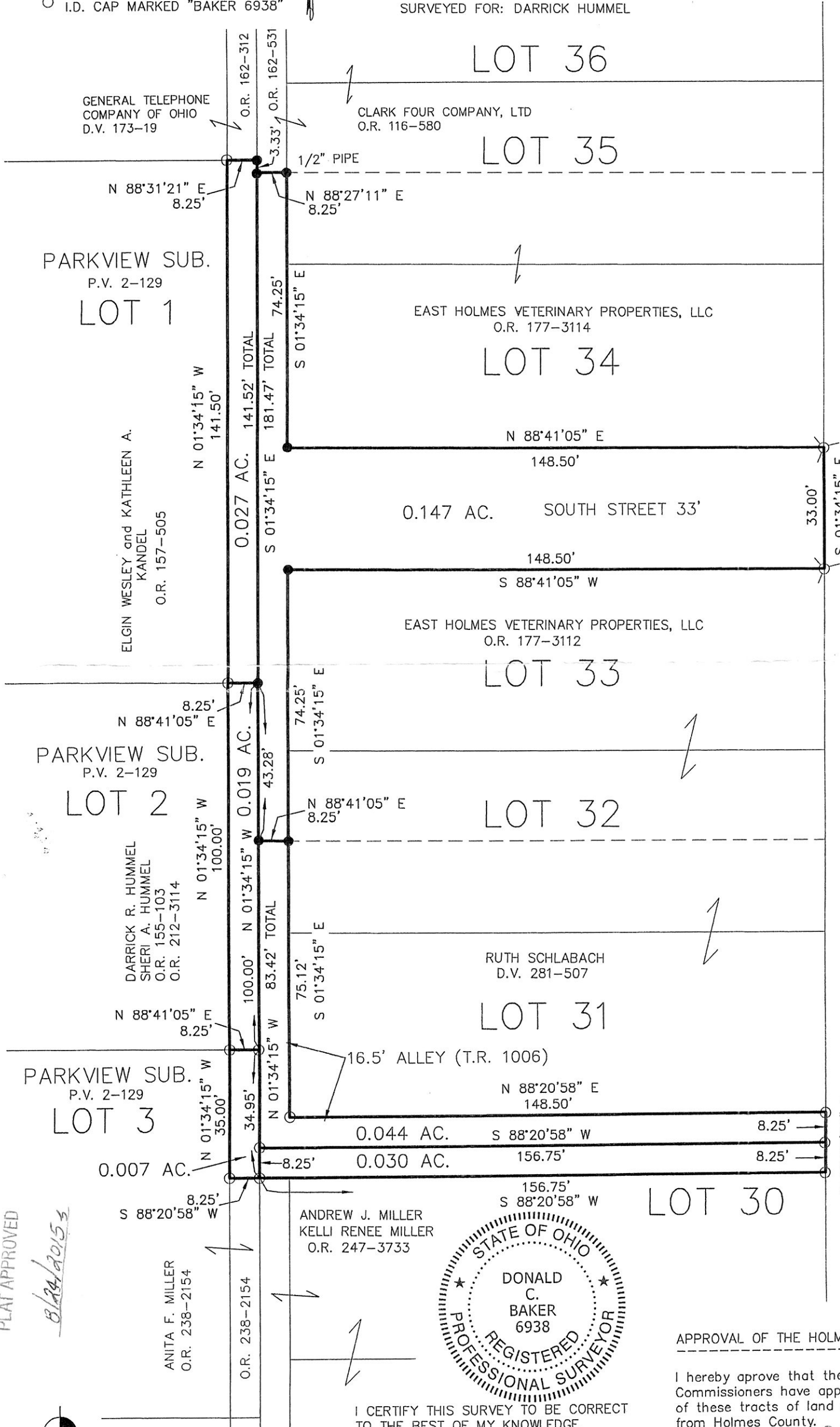
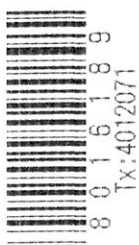
VILLAGE OF BERLIN

BERLIN TOWNSHIP
N.W. QTR. SECTION 15
T-9 N; R-5 W
HOLMES COUNTY, OHIO

SURVEYED FOR: DARRICK HUMMEL

REFERENCES

- DEED VOL. 173 PAGE 19
 - DEED VOL. 281 PAGE 507
 - O.R. VOL. 116 PAGE 580
 - O.R. VOL. 162 PAGE 312
 - O.R. VOL. 162 PAGE 531
 - O.R. VOL. 157 PAGE 505
 - O.R. VOL. 212 PAGE 3114
 - O.R. VOL. 238 PAGE 2154
 - O.R. VOL. 247 PAGE 3733
 - O.R. VOL. 177 PAGE 3112
 - O.R. VOL. 177 PAGE 3114
 - PLAT VOL. 2 PAGE 129
 - PLAT VOL. 18 PAGE 712
- BEARINGS FROM
PLAT VOL. 18 PAGE 712



PARKVIEW SUB.
P.V. 2-129
LOT 1

PARKVIEW SUB.
P.V. 2-129
LOT 2

PARKVIEW SUB.
P.V. 2-129
LOT 3

LOT 36

LOT 35

LOT 34

LOT 33

LOT 32

LOT 31

LOT 30

MARKET STREET 66'
AKA C.R. 120

PLAT APPROVED
8/24/2015



DONALD C. BAKER SURVEYING
138 N. CLAY STREET
MILLERSBURG, OHIO 44654
PH. 330-674-4788
FAX 330-674-6027



I CERTIFY THIS SURVEY TO BE CORRECT
TO THE BEST OF MY KNOWLEDGE.

Donald C. Baker
DONALD C. BAKER P.S. 6938
DATE: JAN. 29, 2015
CJG\JNG\JPD\ALG
FILE NAME: WORK4\S-535-14

APPROVAL OF THE HOLMES COUNTY COMMISSIONERS

I hereby approve that the Holmes County
Commissioners have approved the detachment
of these tracts of land as shown hereon
from Holmes County.
Resolution # 08-24-15-1
24th day of August, 2015
Robert F. Add
Chairman, County Commissioners