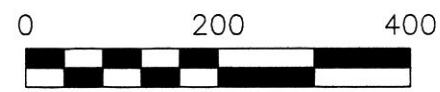


CLARK TOWNSHIP
N.W. & S.W. QTRS. SECTION 5
T-8 N; R-5 W
HOLMES COUNTY, OHIO
SURVEYED FOR: BENJAMIN MILLER



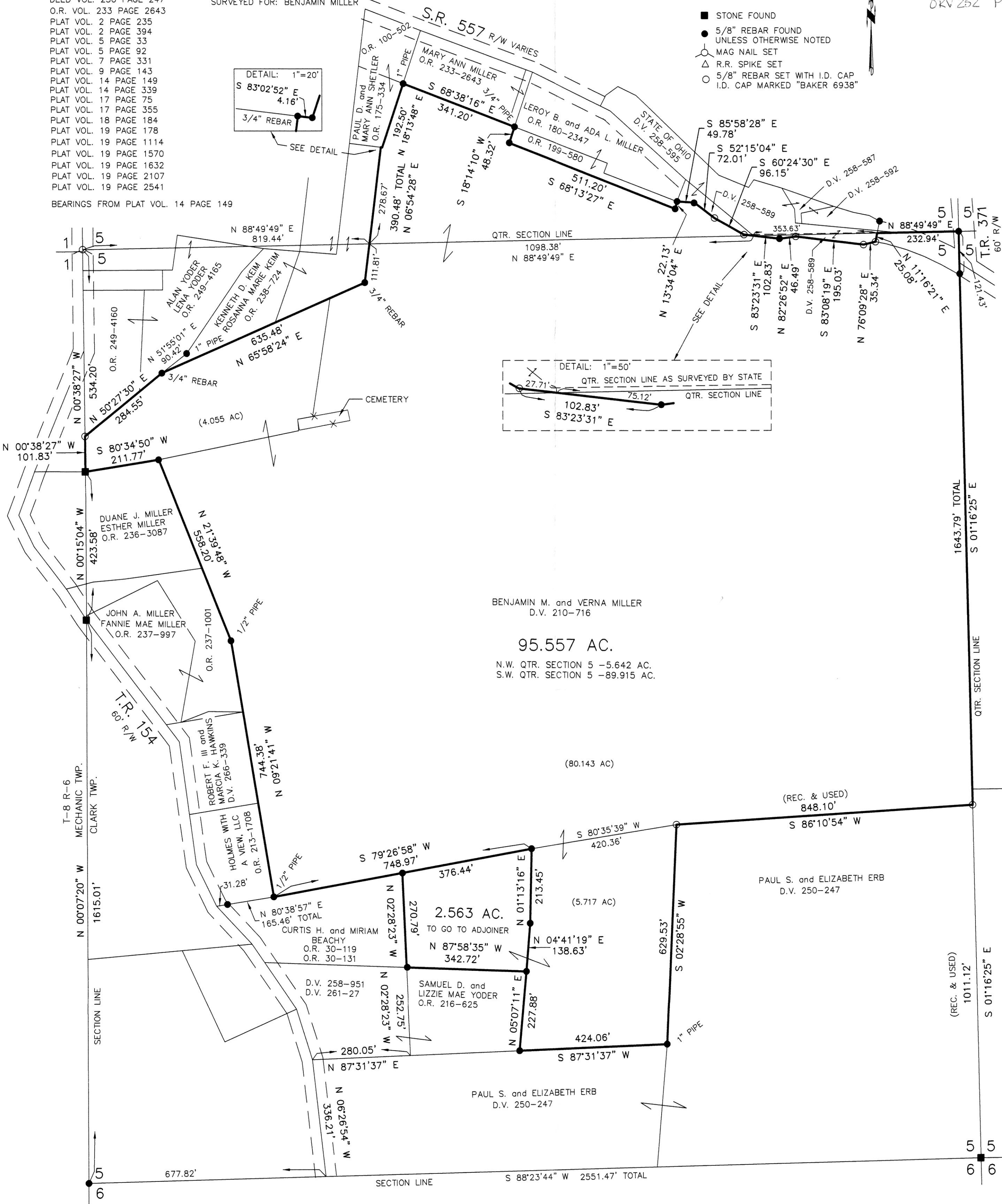
SCALE: 1"=200'

ORV 252 P 28
ORV 252 P 31

REFERENCES

- DEED VOL. 210 PAGE 716
- DEED VOL. 250 PAGE 247
- O.R. VOL. 233 PAGE 2643
- PLAT VOL. 2 PAGE 235
- PLAT VOL. 2 PAGE 394
- PLAT VOL. 5 PAGE 33
- PLAT VOL. 5 PAGE 92
- PLAT VOL. 7 PAGE 331
- PLAT VOL. 9 PAGE 143
- PLAT VOL. 14 PAGE 149
- PLAT VOL. 14 PAGE 339
- PLAT VOL. 17 PAGE 75
- PLAT VOL. 17 PAGE 355
- PLAT VOL. 18 PAGE 184
- PLAT VOL. 19 PAGE 178
- PLAT VOL. 19 PAGE 1114
- PLAT VOL. 19 PAGE 1570
- PLAT VOL. 19 PAGE 1632
- PLAT VOL. 19 PAGE 2107
- PLAT VOL. 19 PAGE 2541

BEARINGS FROM PLAT VOL. 14 PAGE 149



BENJAMIN M. and VERNA MILLER
D.V. 210-716

95.557 AC.

N.W. QTR. SECTION 5 - 5.642 AC.
S.W. QTR. SECTION 5 - 89.915 AC.

(80.143 AC)

(REC. & USED)
848.10'

PAUL S. and ELIZABETH ERB
D.V. 250-247



I CERTIFY THIS SURVEY TO BE CORRECT
TO THE BEST OF MY KNOWLEDGE.

A.L.G.
AARON L. GERBER P.S. 8379
DATE: FEB. 5, 2015
ALG\CJG\FDB
FILE NAME: WORK5-2015\S-26-15\MLD



DONALD C. BAKER SURVEYING
138 N. CLAY STREET
MILLERSBURG, OHIO 44654
PH. 330-674-4788
FAX 330-674-6027
EMAIL: bakersurveying@gmail.com

PLAT APPROVED

4/2/2015

APPROVED FOR TRANSFER ONLY
NO SUBDIVISION PLAT REQUIRED
(O.R.C. 711.001 & 711.131)
Lot(s) not for building unless
approved by Board of Health.
HCP
HOLMES COUNTY PLANNING COMMISSION
By: [Signature] Date: 4-6-15