

ORV 251 P5990

0 200 400



SCALE: 1"=200'

- ▲ R.R. SPIKE FOUND
- 5/8" REBAR FOUND UNLESS OTHERWISE NOTED

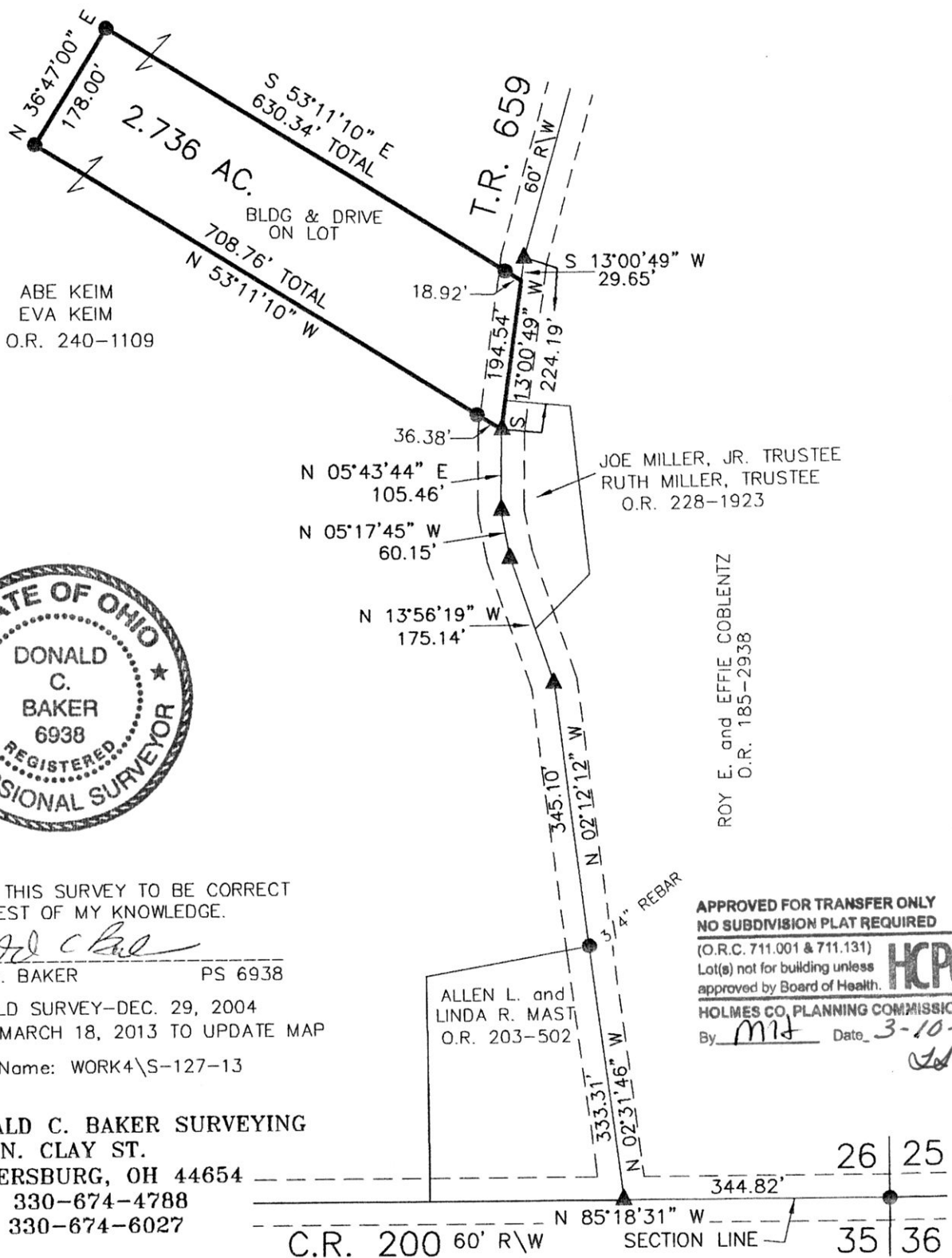


REFERENCES:

- O.R. VOL. 240 PAGE 1109
- O.R. VOL. 185 PAGE 2938
- O.R. VOL. 228 PAGE 1923
- PLAT VOL. 2 PAGES 321 & 416
- PLAT VOL. 4 PAGE 117
- PLAT VOL. 19 PAGE 2181
- PLAT VOL. 19 PAGE 592
- PLAT VOL. 19 PAGE 1908
- BEARINGS FROM PLAT VOL. 19 PAGE 2181

PAINT TOWNSHIP  
S.E. QTR. SECTION 26  
T-15 N; R-11 W  
HOLMES COUNTY, OHIO

PLATTED FOR: ATTY. SAM STEIMEL



ABE KEIM  
EVA KEIM  
O.R. 240-1109

JOE MILLER, JR. TRUSTEE  
RUTH MILLER, TRUSTEE  
O.R. 228-1923

ROY E. and EFFIE COBLENTZ  
O.R. 185-2938

ALLEN L. and LINDA R. MAST  
O.R. 203-502

APPROVED FOR TRANSFER ONLY  
NO SUBDIVISION PLAT REQUIRED

(O.R.C. 711.001 & 711.131)  
Lot(s) not for building unless  
approved by Board of Health.



HOLMES CO. PLANNING COMMISSION  
By MH Date 3-10-15



I CERTIFY THIS SURVEY TO BE CORRECT  
TO THE BEST OF MY KNOWLEDGE.

*Donald C. Baker*

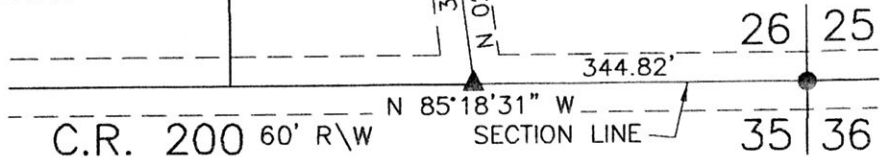
DONALD C. BAKER PS 6938

DATE: FIELD SURVEY-DEC. 29, 2004  
REVISED: MARCH 18, 2013 TO UPDATE MAP

File Name: WORK4\S-127-13



DONALD C. BAKER SURVEYING  
138 N. CLAY ST.  
MILLERSBURG, OH 44654  
PH. 330-674-4788  
FAX: 330-674-6027



PLAT APPROVED

3/5/2015

