

SCALE: 1"=100'

- 5/8" REBAR FOUND UNLESS OTHERWISE NOTED
- 5/8" REBAR SET WITH I.D. CAP I.D. CAP MARKED "BAKER 6938"

REFERENCES

O.R. VOL. 184 PAGE 2990
 PLAT VOL. 19 PAGE 495
 PLAT VOL. 19 PAGE 643
 PLAT VOL. 12 PAGE 464
 BEARINGS FROM
 PLAT VOL. 12 PAGE 464



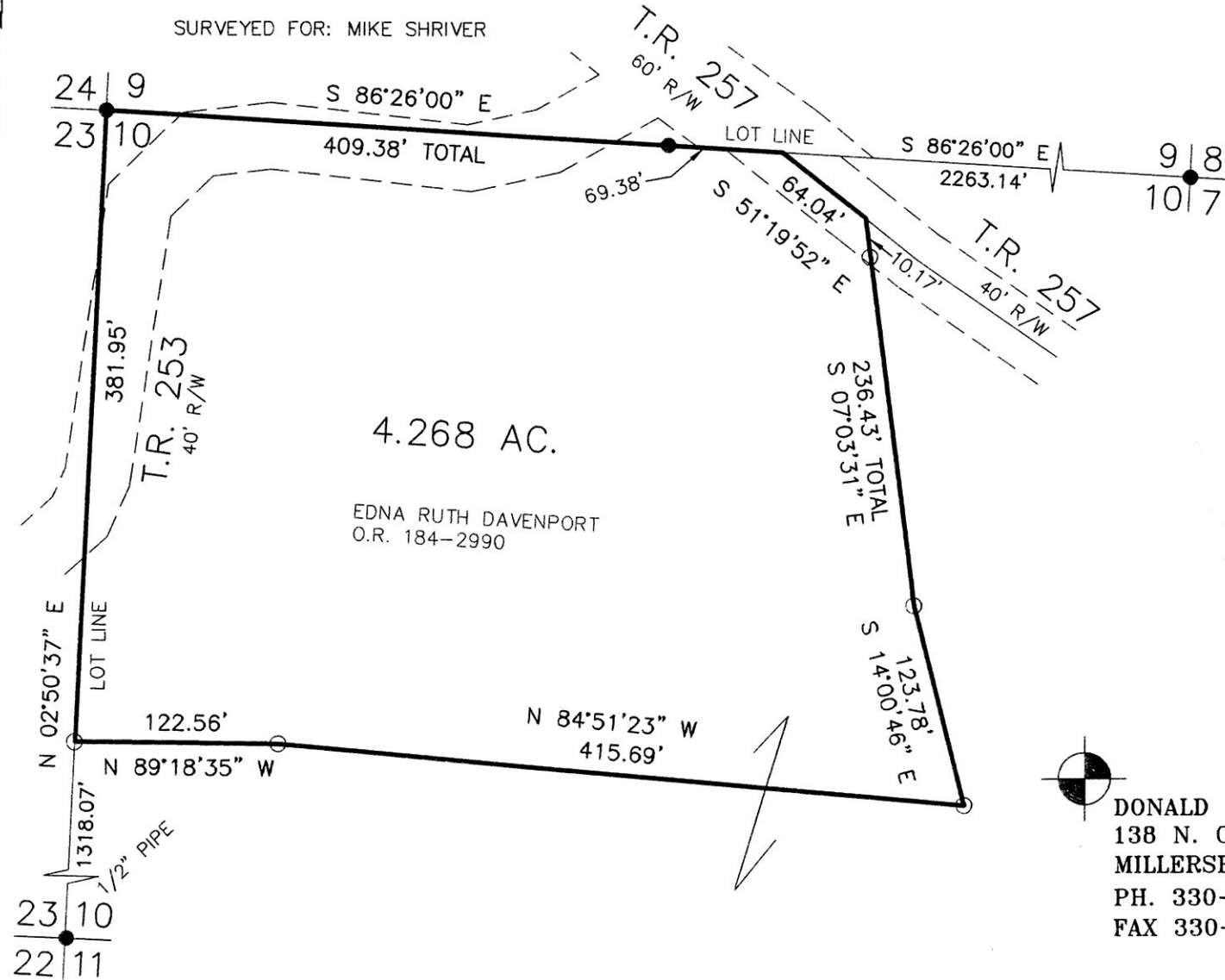
I CERTIFY THIS SURVEY TO BE CORRECT TO THE BEST OF MY KNOWLEDGE.

Donald C. Baker

DONALD C. BAKER P.S. 6938
 DATE: NOV. 12, 2014
 KES\JPD
 FILE NAME: WORK4\S-556-14

MONROE TOWNSHIP
 3RD. QTR., LOT 10
 T-9 N; R-8 W
 HOLMES COUNTY, OHIO

SURVEYED FOR: MIKE SHRIVER



201500091991

B: 19 P: 2622

FILED FOR RECORD IN
 HOLMES COUNTY, OH
 ANITA HALL, COUNTY RECORDER
 01/02/2015 2:59 PM
 SMALL PLAT . 40.00
 PAGES: 1

ORV 251 P1412

APPROVED FOR TRANSFER ONLY
 NO SUBDIVISION PLAT REQUIRED

(O.R.C. 711.001 & 711.131)
 Lot(s) not for building unless
 approved by Board of Health.



HOLMES CO. PLANNING COMMISSION
 By *MH* Date *12/3/14*



DONALD C. BAKER SURVEYING
 138 N. CLAY STREET
 MILLERSBURG, OHIO 44654
 PH. 330-674-4788
 FAX 330-674-6027

PLAT APPROVED

12/19/2014