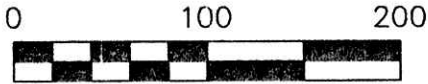


CRV 250 pg 760



SCALE: 1"=100'

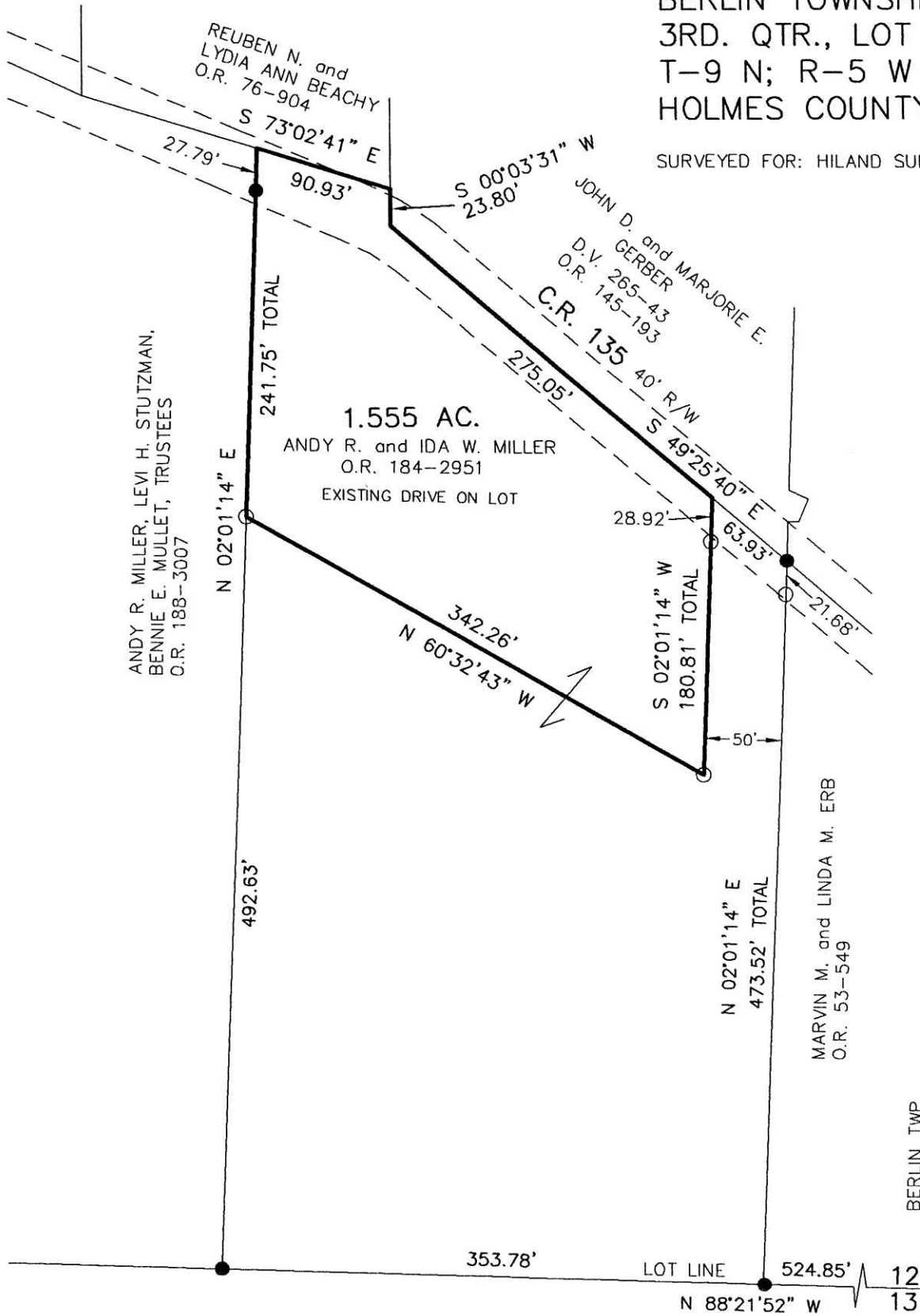
- 5/8" REBAR FOUND UNLESS OTHERWISE NOTED
- 5/8" REBAR SET WITH I.D. CAP I.D. CAP MARKED "BAKER 6938"

REFERENCES

O.R. VOL. 184 PAGE 2591  
 PLAT VOL. 2 PAGE 302  
 PLAT VOL. 12 PAGE 102  
 PLAT VOL. 10 PAGE 38  
 PLAT VOL. 14 PAGE 543  
 BEARINGS FROM  
 PLAT VOL. 2 PAGE 302

BERLIN TOWNSHIP  
 3RD. QTR., LOT 12  
 T-9 N; R-5 W  
 HOLMES COUNTY, OHIO

SURVEYED FOR: HILAND SUPPLY CO.



I CERTIFY THIS SURVEY TO BE CORRECT TO THE BEST OF MY KNOWLEDGE.

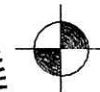
*Donald C. Baker*

DONALD C. BAKER P.S. 6938

DATE: JUNE 26, 2014

KES\AGG

FILE NAME: WORK4\S-287-14



DONALD C. BAKER SURVEYING  
 138 N. CLAY STREET  
 MILLERSBURG, OHIO 44654  
 PH. 330-674-4788  
 FAX 330-674-6027

PLAT APPROVED

*8/12/2014s*

