

WASHINGTON TOWNSHIP  
N.E. QTR. SECTION 15  
T-19 N; R-15 W  
HOLMES COUNTY, OHIO

SURVEYED FOR: THOMAS FAMILY FARM LTD.

REFERENCES

- O.R. VOL. 216 PAGE 1850
- O.R. VOL. 224 PAGE 2672
- O.R. VOL. 224 PAGE 3044
- O.R. VOL. 224 PAGE 3047
- PLAT VOL. 4 PAGE 171
- PLAT VOL. 18 PAGE 414
- PLAT VOL. 18 PAGE 551

BEARINGS FROM PLAT VOL. 18 PAGE 414



SCALE: 1" = 200'

- 5/8" REBAR FOUND UNLESS OTHERWISE NOTED
- 5/8" REBAR SET WITH I.D. CAP I.D. CAP MARKED "BAKER 6938"

APPROVED FOR TRANSFER ONLY  
NO SUBDIVISION PLAT REQUIRED

(O.R.C. 711.001 & 711.131)  
Lot(s) not for building unless approved by Board of Health.



HOLMES CO. PLANNING COMMISSION

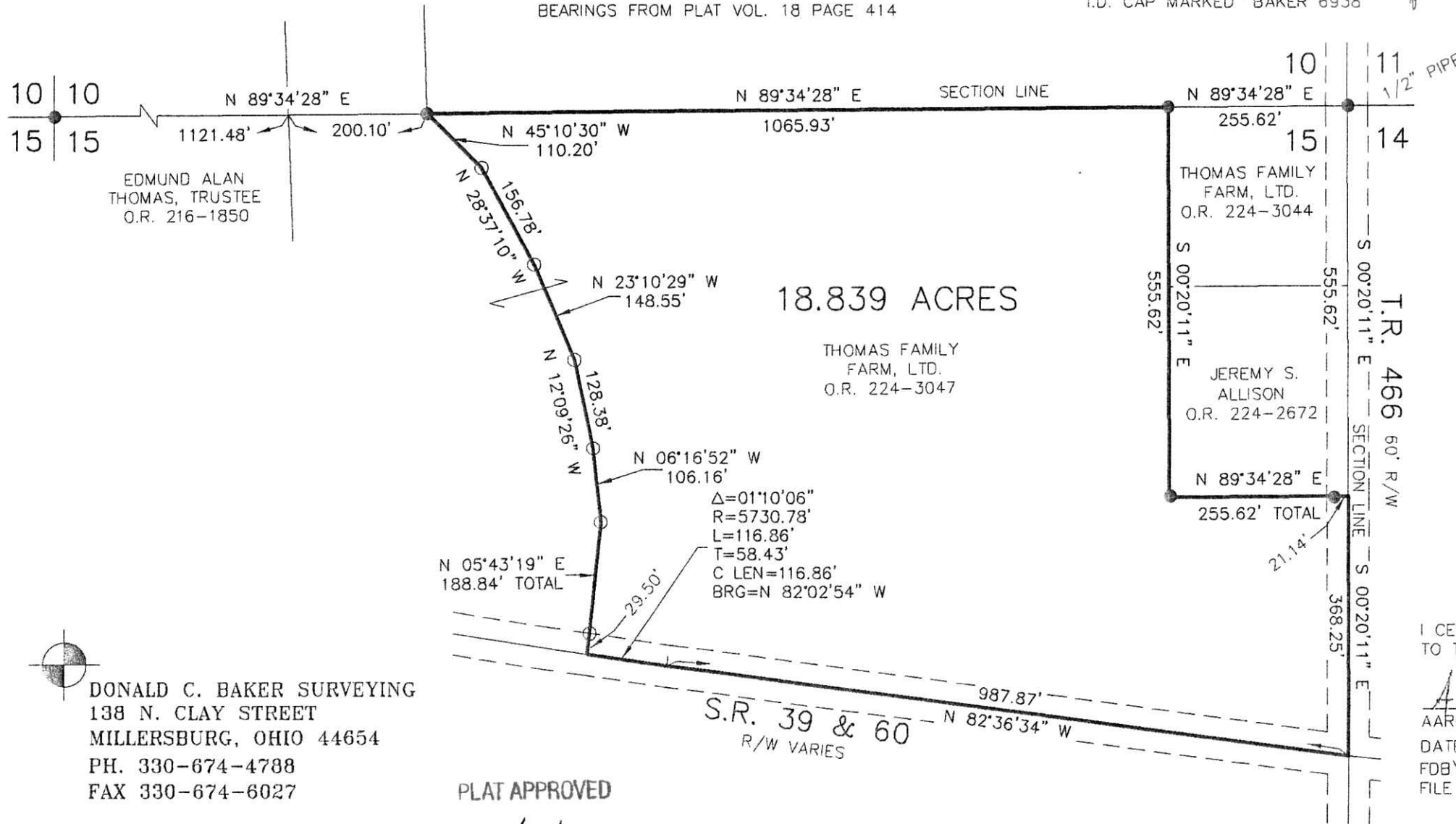
By JB Date 6-26-14

201400089598

B: 19 P: 2527

FILED FOR RECORD IN  
HOLMES COUNTY, OH  
ANITA HALL, COUNTY RECORDER  
07/22/2014 12:52 PM  
SMALL PLAT . 40.00

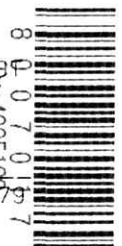
ORV 249 page 3472



I CERTIFY THIS SURVEY TO BE CORRECT TO THE BEST OF MY KNOWLEDGE.

*A.L.G.*

AARON L. GERBER P.S. 8379  
DATE: JUNE 12, 2014  
FDB\KES  
FILE NAME: WORK4\S-231A14\ALG



DONALD C. BAKER SURVEYING  
138 N. CLAY STREET  
MILLERSBURG, OHIO 44654  
PH. 330-674-4788  
FAX 330-674-6027

PLAT APPROVED

6/26/2014