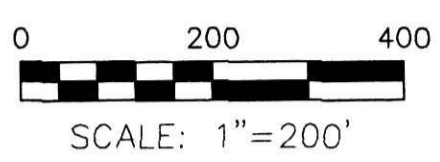
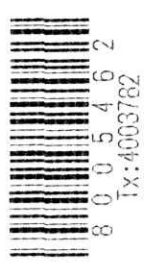


HARDY TOWNSHIP
 N.E. QTR. SECTION 23
 S.E. QTR. SECTION 23
 T-9 N; R-7 W
 HOLMES COUNTY, OHIO

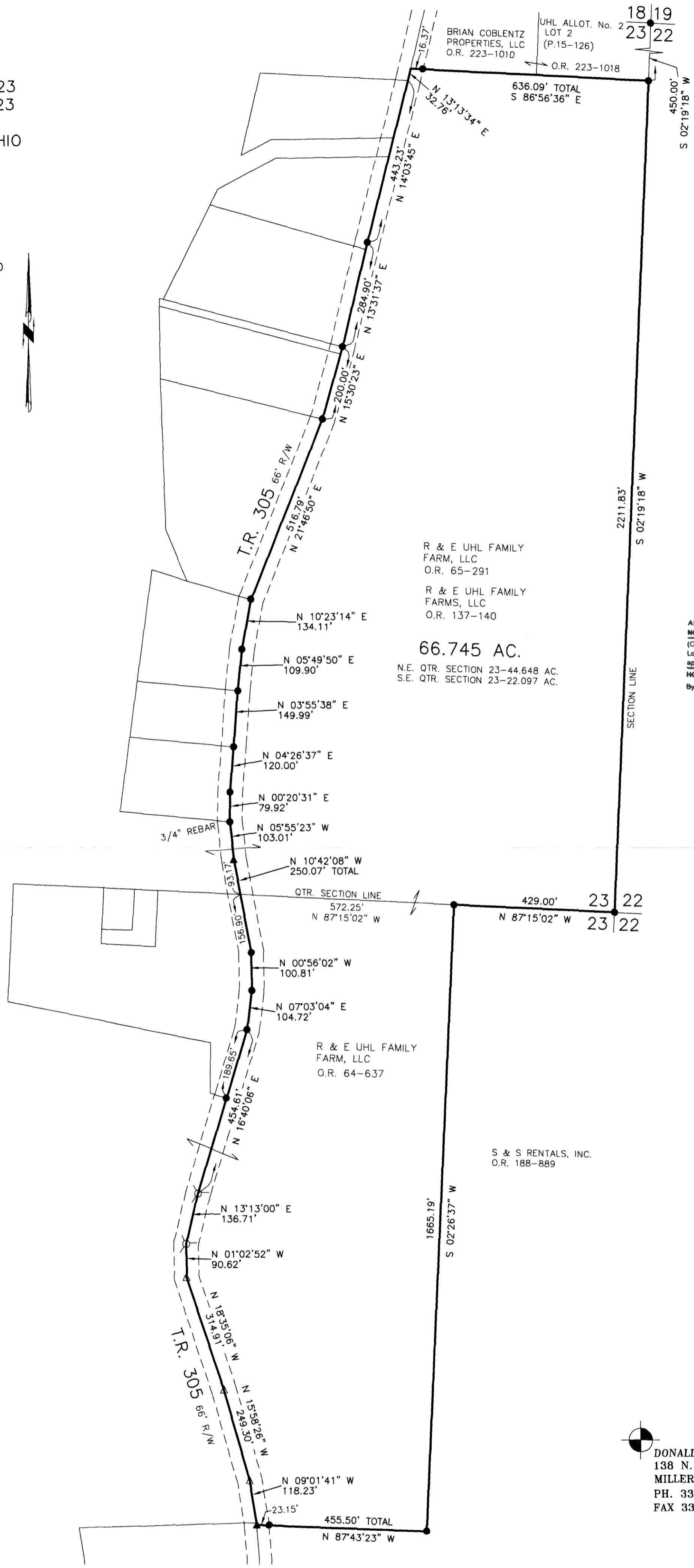
SURVEYED FOR: DICK UHL



- ▲ R.R. SPIKE FOUND
- 5/8" REBAR FOUND UNLESS OTHERWISE NOTED
- MAG NAIL SET
- △ R.R. SPIKE SET

REFERENCES

- O.R. VOL. 64 PAGE 637
- O.R. VOL. 65 PAGE 291
- O.R. VOL. 137 PAGE 140
- O.R. VOL. 188 PAGE 889
- O.R. VOL. 223 PAGE 1010
- O.R. VOL. 223 PAGE 1018
- PLAT VOL. 15 PAGE 126
- PLAT VOL. 17 PAGE 738
- PLAT VOL. 18 PAGE 390
- PLAT VOL. 19 PAGE 1883
- PLAT VOL. 19 PAGE 1782
- PLAT VOL. 2 PAGE 196
- PLAT VOL. 19 PAGE 1564
- BEARINGS FROM
 PLAT VOL. 17 PAGE 738



R & E UHL FAMILY FARM, LLC
 O.R. 65-291

R & E UHL FAMILY FARMS, LLC
 O.R. 137-140

66.745 AC.
 N.E. QTR. SECTION 23-44.648 AC.
 S.E. QTR. SECTION 23-22.097 AC.

APPROVED FOR TRANSFER ONLY
 NO SUBDIVISION PLAT REQUIRED
 (O.R.C. 711.001 & 711.131)
 Lot(s) not for building unless approved by Board of Health
 HOLMES CO. PLANNING COMMISSION
 By: *[Signature]* Date: 4/18/14



I CERTIFY THIS SURVEY TO BE CORRECT TO THE BEST OF MY KNOWLEDGE.
[Signature]
 DONALD C. BAKER P.S. 6938
 DATE: APRIL 2, 2014
 FDB\KES
 FILE NAME: WORK4\S-93-14

DONALD C. BAKER SURVEYING
 138 N. CLAY STREET
 MILLERSBURG, OHIO 44654
 PH. 330-674-4788
 FAX 330-674-6027