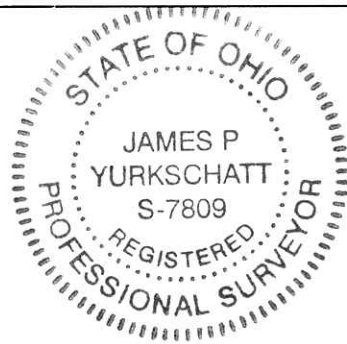


I HEREBY CERTIFY THAT THIS SURVEY WAS PREPARED IN ACCORDANCE WITH THE MINIMUM STANDARDS FOR BOUNDARY SURVEYS IN THE STATE OF OHIO AS DESCRIBED IN O.A.C. CHAPTER 4733-37.



STATE OF OHIO, COUNTY OF HOLMES,
TOWNSHIP OF PRAIRIE (T-13-N, R-13-W),
BEING PART OF THE N.W. QTR. OF SEC. 3

BASIS OF BEARINGS

THE BASIS OF BEARINGS FOR THIS SURVEY IS GRID NORTH OF THE OHIO STATE PLANE COORDINATE SYSTEM, NORTH ZONE, NAD83(2011).

P.O.B.
N.E. Corner
N.W. Qtr.
Section 3

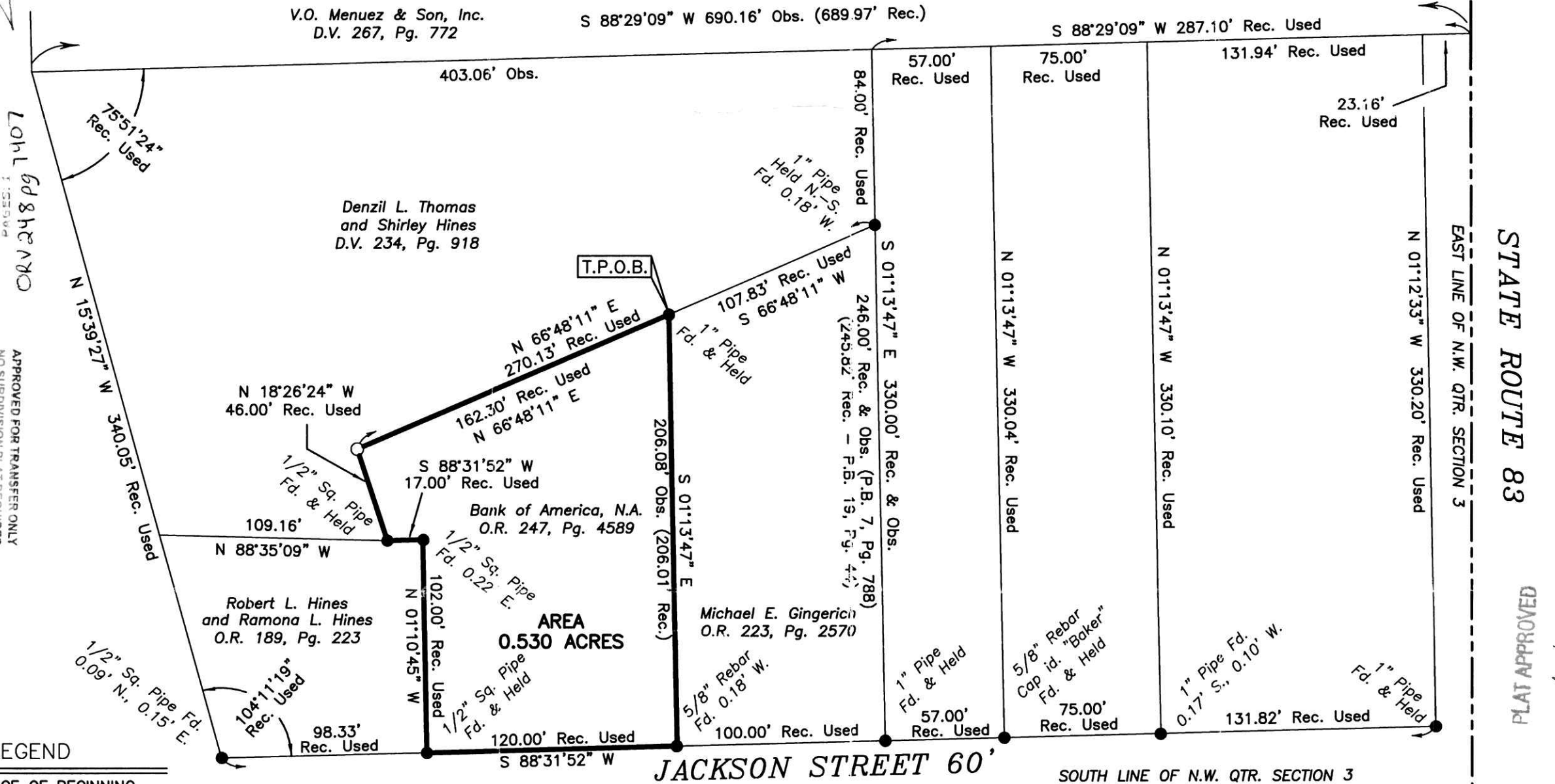
S 00°1'02" E
2280.59' Obs.
Fd. 1" Pipe & Held

JAMES P. YURKSCHATT REG. NO. 7809 DATE 3/24/2014
CAMPBELL & ASSOCIATES, INC.

V.O. Menezes & Son, Inc.
D.V. 267, Pg. 772

S 88°29'09" W 690.16' Obs. (689.97' Rec.)

S 88°29'09" W 287.10' Rec. Used



DATE: 03/24/14
BY: JPY
SCALE: 1"=60'

BOUNDARY SURVEY
8515 W. JACKSON STREET
HOLMESVILLE, OHIO 44633



3485 Fortuna Drive Suite 100
Akron, Ohio 44312
(330) 945-4117
www.campbellsurvey.com

JOB NO.
20140068

SHEET 1 OF 1

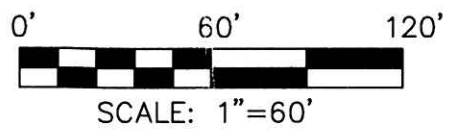
FILED FOR RECORD IN
HOLMES COUNTY, OH
REC'D AT COUNTY RECORDER
OFFICE
05/03/2014 10:26 AM
SMALL PLAT #0000
PAGES: 1
CRV 248 pg 140L

APPROVED FOR TRANSFER ONLY
NO SUBDIVISION PLAT REQUIRED
(O.R.C. 711.001 & 711.131)
Lot(s) not for building unless
approved by Board of Health
HOLMES CO. PLANNING COMMISSION
By: [Signature] Date: 5/16/14

STATE ROUTE 83
EAST LINE OF N.W. QTR. SECTION 3

PLAT APPROVED
5/14/2014

- LEGEND
- P.O.B. - PLACE OF BEGINNING
 - T.P.O.B. - TRUE PLACE OF BEGINNING
 - REC. - RECORD
 - OBS. - OBSERVED
 - - MONUMENT FOUND, SIZE & TYPE AS INDICATED.
 - - 5/8" REBAR, 30 INCHES IN LENGTH, WITH I.D. CAP C&A SET



- REFERENCES
- PLAT VOL. 4, PG. 20
 - PLAT VOL. 5, PG. 158
 - PLAT VOL. 6, PG. 113
 - PLAT VOL. 7, PG. 788
 - PLAT VOL. 14, PG. 752
 - PLAT VOL. 16, PG. 577
 - PLAT VOL. 18, PG. 626
 - PLAT VOL. 19, PG. 44
 - PLAT VOL. 19, PG. 715
 - DEEDS REFERENCED HEREON

