



REFERENCES
 DEED VOL. 247 PAGE 525
 O.R. VOL. 141 PAGE 717
 O.R. VOL. 247 PAGE 5293

PLAT VOL. 6 PAGE 90
 PLAT VOL. 7 PAGE 252
 PLAT VOL. 7 PAGE 251
 PLAT VOL. 11 PAGE 58
 PLAT VOL. 12 PAGE 525
 PLAT VOL. 17 PAGE 505

BEARINGS FROM
 PLAT VOL. 7 PAGE 252



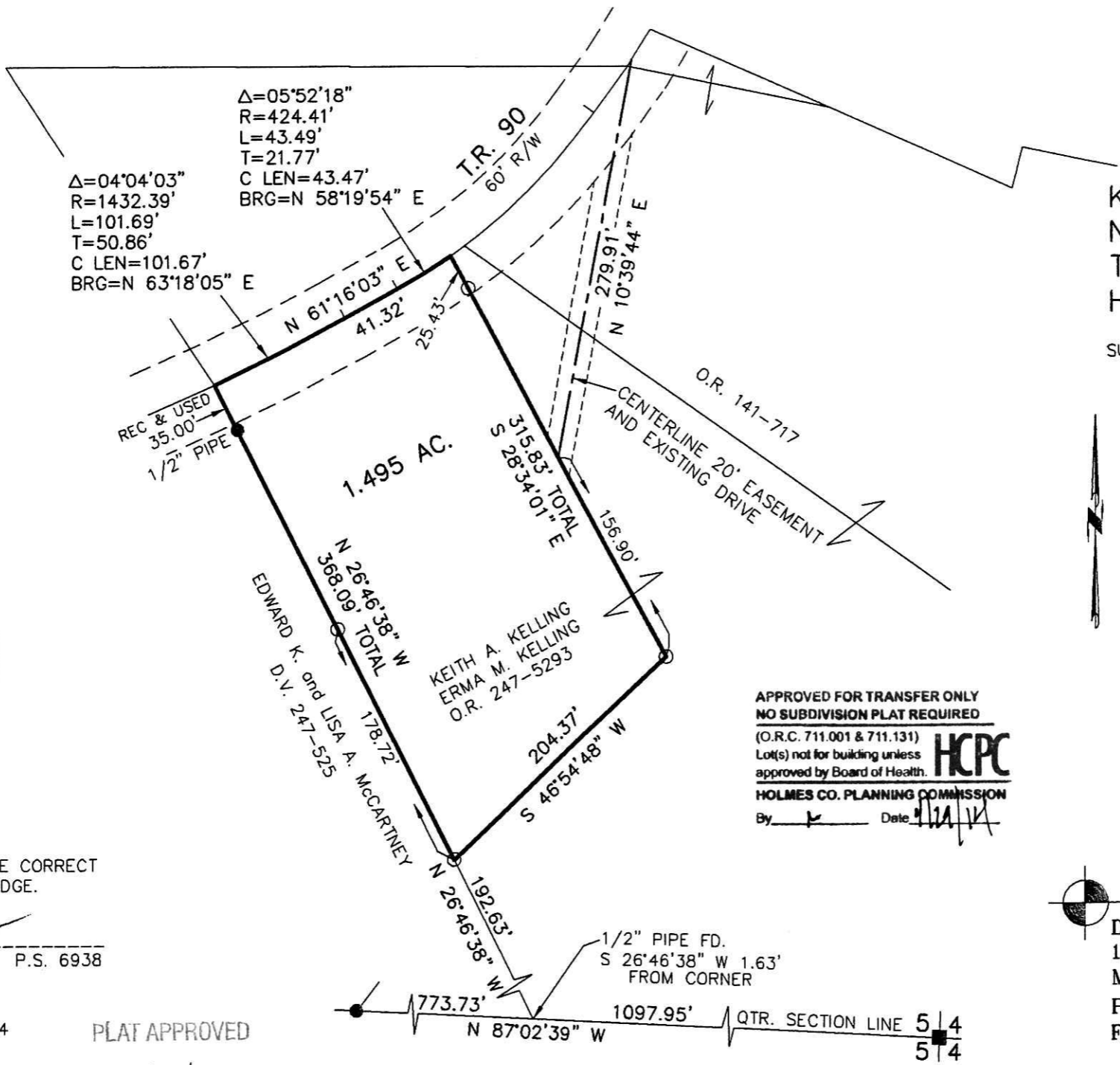
I CERTIFY THIS SURVEY TO BE CORRECT
 TO THE BEST OF MY KNOWLEDGE.

Donald C. Baker
 DONALD C. BAKER P.S. 6938

DATE: MARCH 13, 2014
 FDB\AEG
 FILE NAME: WORK4\S-103-14

PLAT APPROVED

4/23/2014s



APPROVED FOR TRANSFER ONLY
 NO SUBDIVISION PLAT REQUIRED
 (O.R.C. 711.001 & 711.131)
 Lot(s) not for building unless approved by Board of Health.
 HCPC
 HOLMES CO. PLANNING COMMISSION
 By: *[Signature]* Date: *3/11/14*

201400088549
 B: 19 P: 2479
 FILED FOR RECORD IN
 HOLMES COUNTY, OH
 ANITA HALL, COUNTY RECORDER
 05/07/2014 11:14 AM
 SMALL PLAT . 40.00
 PAGES: 1
 OR 243-5450

KILLBUCK TOWNSHIP
 N.E. QTR. SECTION 5
 T-8 N; R-7 W
 HOLMES COUNTY, OHIO

SURVEYED FOR: KEITH KELLING

0 100 200

 SCALE: 1"=100'
 ■ STONE FOUND
 ● 5/8" REBAR FOUND UNLESS OTHERWISE NOTED
 ○ 5/8" REBAR SET WITH I.D. CAP I.D. CAP MARKED "BAKER 6938"

DONALD C. BAKER SURVEYING
 138 N. CLAY STREET
 MILLERSBURG, OHIO 44654
 PH. 330-674-4788
 FAX 330-674-6027