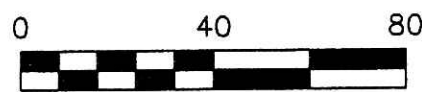


VILLAGE OF BERLIN
 PART OF LOT 100
 BERLIN TOWNSHIP
 N.W. QTR. SECTION 15
 T-9 N; R-5 W
 HOLMES COUNTY, OHIO

SURVEYED FOR: BERLIN HOUSE, INC.



SCALE: 1" = 40'

- 5/8" REBAR FOUND
UNLESS OTHERWISE NOTED
- PK NAIL SET
- 5/8" REBAR SET WITH I.D. CAP
I.D. CAP MARKED "BAKER 6938"
- DRILL HOLE SET

REFERENCES

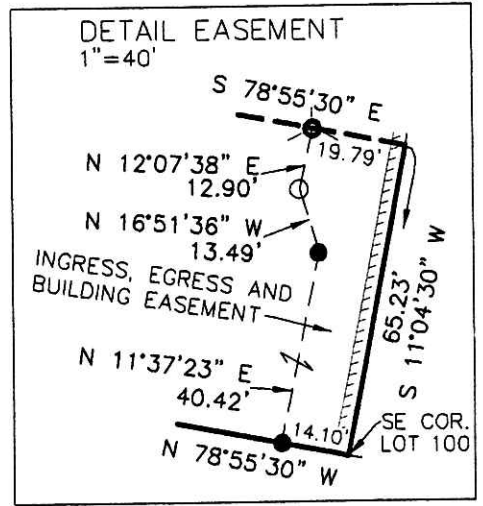
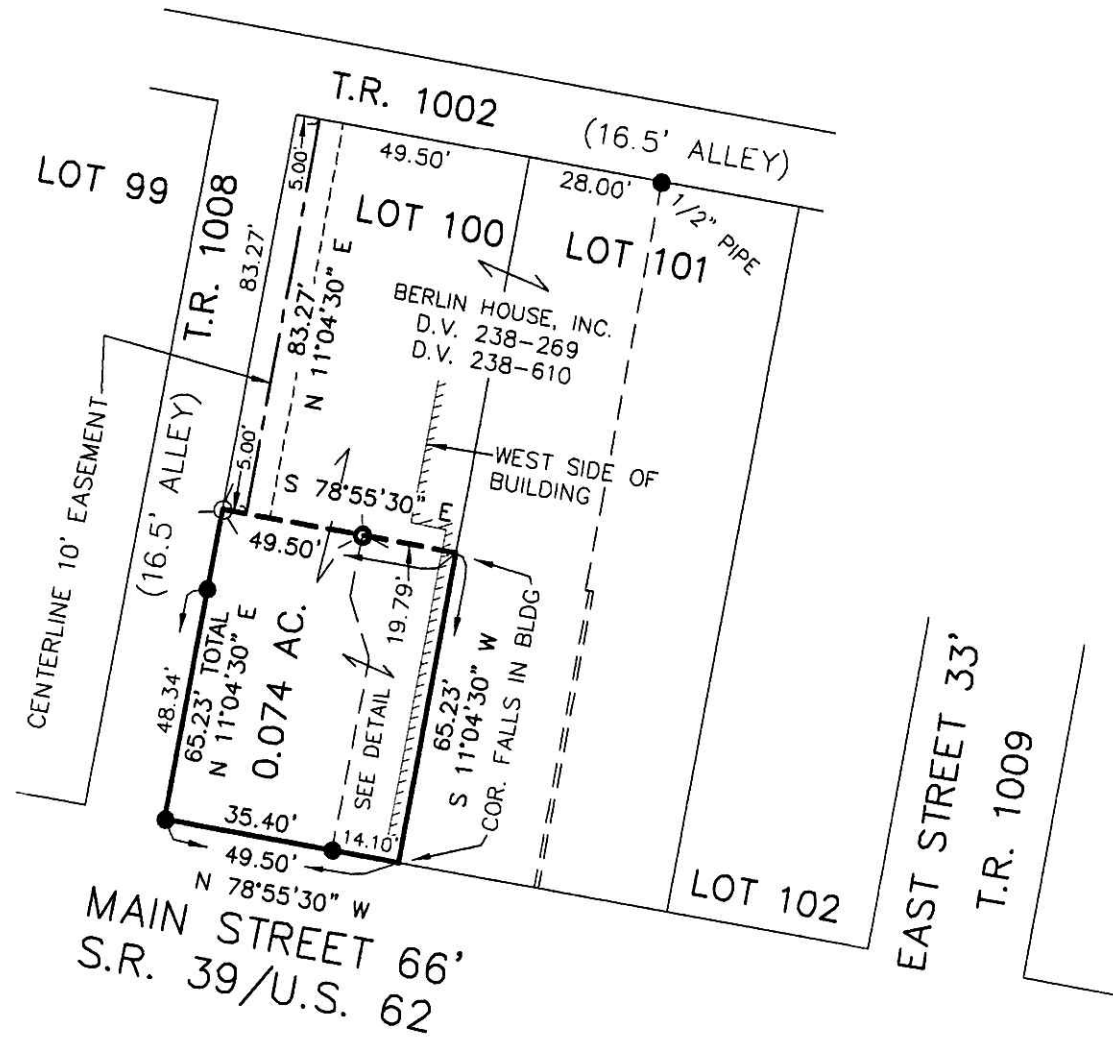
- DEED VOL. 238 PAGE 610
- PLAT VOL. 9 PAGE 219
- PLAT VOL. 12 PAGE 203
- PLAT VOL. 19 PAGE 1866
- BEARINGS FROM
PLAT VOL. 12 PAGE 203



DONALD C. BAKER SURVEYING
 138 N. CLAY STREET
 MILLERSBURG, OHIO 44654
 PH. 330-674-4788
 FAX 330-674-6027

PLAT APPROVED

4/9/2014



I CERTIFY THIS SURVEY TO BE CORRECT
 TO THE BEST OF MY KNOWLEDGE.

Donald C Baker

DONALD C. BAKER P.S. 6938
 DATE: MARCH 13, 2014
 FDB\KES
 FILE NAME: WORK4\S-15-14

