

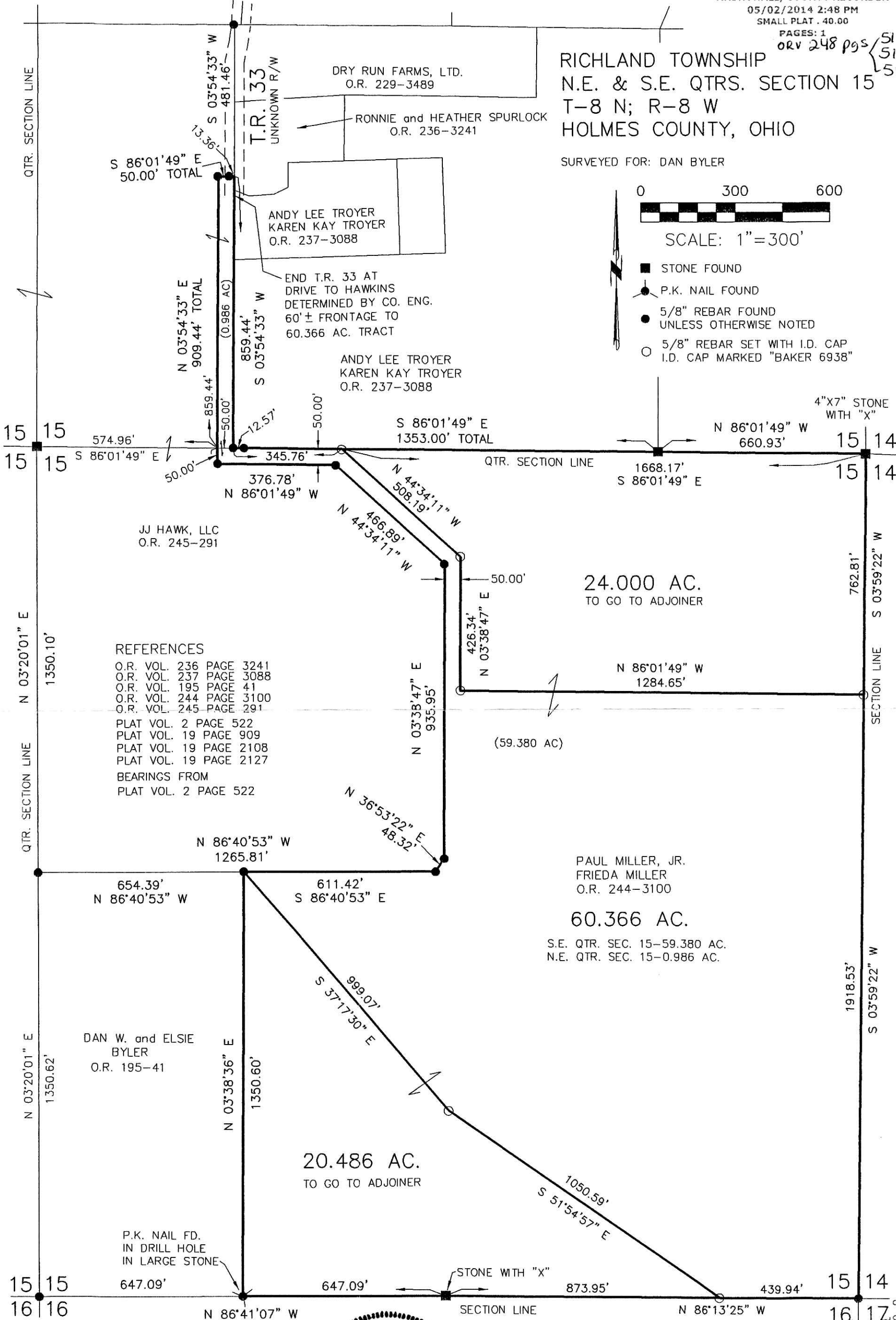
RICHLAND TOWNSHIP
N.E. & S.E. QTRS. SECTION 15
T-8 N; R-8 W
HOLMES COUNTY, OHIO

SURVEYED FOR: DAN BYLER



SCALE: 1"=300'

- STONE FOUND
- P.K. NAIL FOUND
- 5/8" REBAR FOUND UNLESS OTHERWISE NOTED
- 5/8" REBAR SET WITH I.D. CAP I.D. CAP MARKED "BAKER 6938"



- REFERENCES
- O.R. VOL. 236 PAGE 3241
 - O.R. VOL. 237 PAGE 3088
 - O.R. VOL. 195 PAGE 41
 - O.R. VOL. 244 PAGE 3100
 - O.R. VOL. 245 PAGE 291
 - PLAT VOL. 2 PAGE 522
 - PLAT VOL. 19 PAGE 909
 - PLAT VOL. 19 PAGE 2108
 - PLAT VOL. 19 PAGE 2127
 - BEARINGS FROM PLAT VOL. 2 PAGE 522

I CERTIFY THIS SURVEY TO BE CORRECT TO THE BEST OF MY KNOWLEDGE.

Donald C. Baker
DONALD C. BAKER P.S. 6938
DATE: MARCH 12, 2014
FDB/KES
FILE NAME: WORK4\S-89-14



PLAT APPROVED

3/31/2014

DONALD C. BAKER SURVEYING
138 N. CLAY STREET
MILLERSBURG, OHIO 44654
PH. 330-674-4788
FAX 330-674-6027

