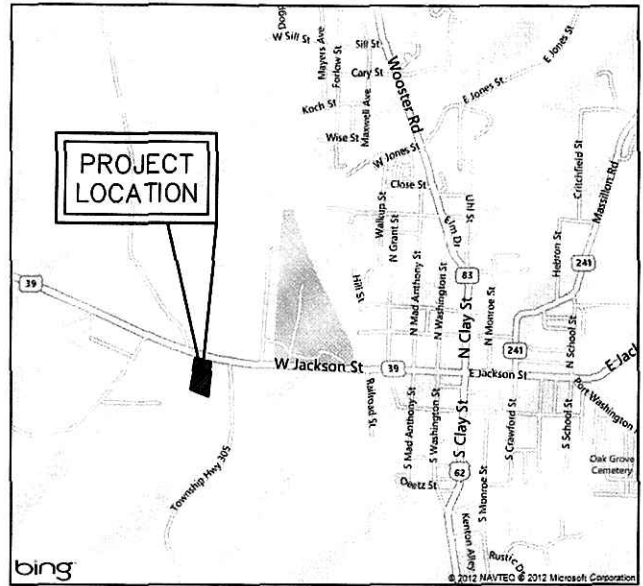
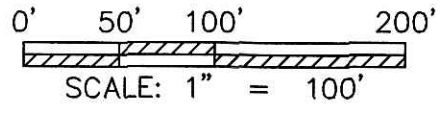


1.868 AC.
ANNEXATION PLAT
 TO THE
VILLAGE OF MILLERSBURG
 PART OF
 T-9N ; R-7W, SECTION 13
 HARDY TOWNSHIP
 HOLMES COUNTY, OHIO

1ST QTR. LOT 48
 13 12



LOCATION MAP

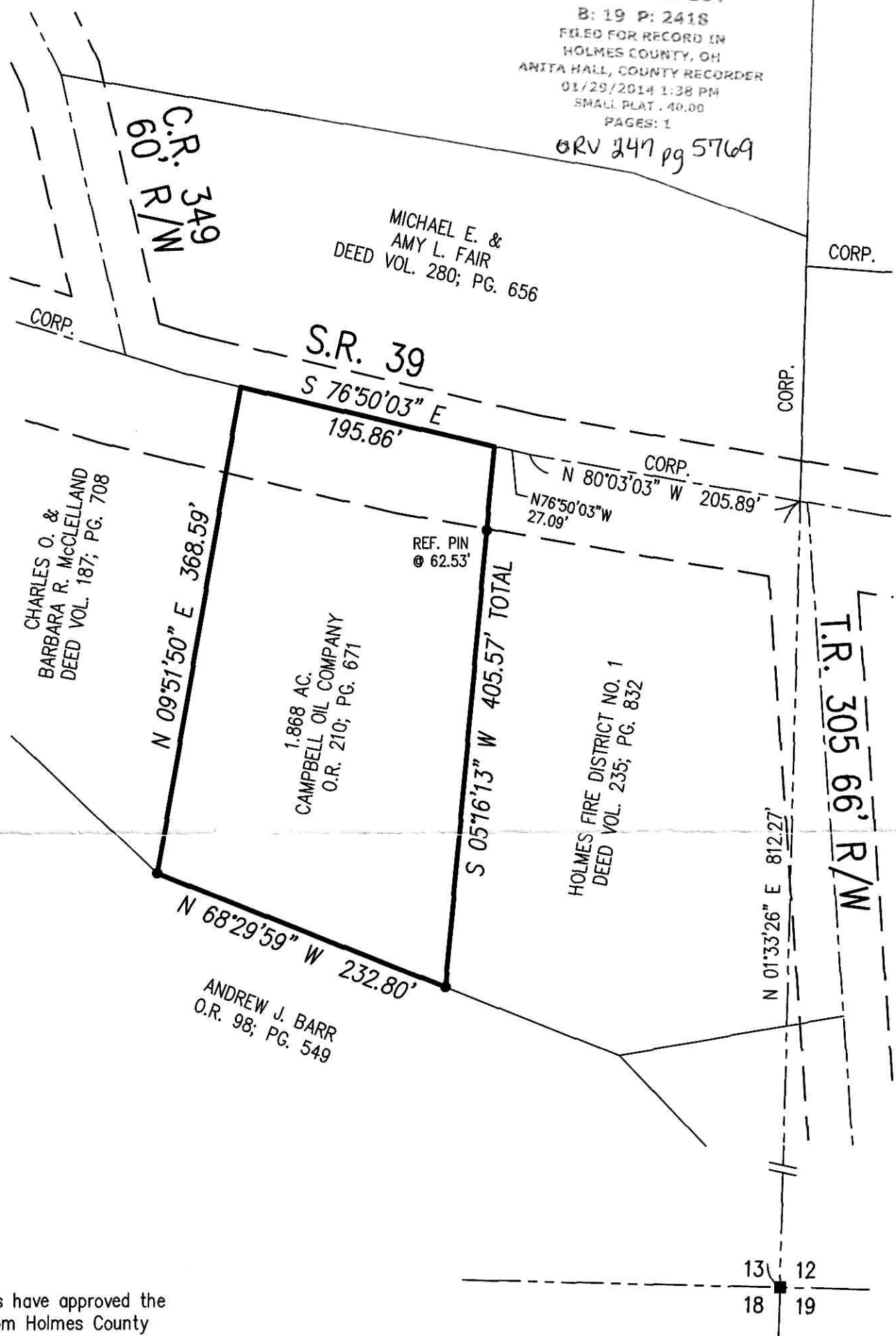


REFERENCE SURVEY:
 VOIL. 10; PG. 242
 VOL. 16; PG. 515
 VOL. 17; PG. 30
 BASIS OF BEARING:
 The bearings are to an assumed meridian.

- STONE FOUND
- I.P. OR PIPE FOUND

201400087197
 B: 19 P: 2418
 FILED FOR RECORD IN
 HOLMES COUNTY, OH
 ANITA HALL, COUNTY RECORDER
 01/29/2014 1:38 PM
 SMALL PLAT . 40.00
 PAGES: 1

ORV 247 pg 5769



APPROVAL OF THE HOLMES COUNTY COMMISSIONERS:
 I hereby certify that the Holmes County Commissioners have approved the detachment of this tract of land as shown hereon, from Holmes County
 This 23rd day of September 2013, Resolution # 9-23-13-2

[Signature]
 Chairman, County Commissioners

APPROVAL OF THE MILLERSBURG PLANNING COMMISSION:
 I hereby certify that this plat for annexation was approved by Millersburg Planning Commission at a meeting held on
 This 7 day of AUGUST 2013,

[Signature]
 President, Millersburg Planning Commission

APPROVAL OF THE MILLERSBURG VILLAGE COUNCIL:
 I hereby certify that this plat for annexation was approved by the Village Council of Millersburg, Ohio at a meeting held on
 This 23rd day of December 2013, Resolution # 2013-37

[Signature]
 Village Clerk Administrator

PLAT APPROVED
 9/13/2013 *[Signature]*

I hereby certify that this plat was prepared on behalf of the property owner from surveys by Donald C. Baker dated 11-22-96 & 02-11-99 and a survey by William H. Long dated 02-29-84 and existing deeds and survey records.

By: *[Signature]* Date 5-21-13
 Mark E. Purdy, P.S. #7307



SHAFFER, JOHNSTON, LICHTENWALTER & ASSOCIATES, INC.
 Consulting Engineers & Surveyors
 3477 Commerce Parkway, Suite C
 Wooster, Ohio 44691
 TEL (330) 345-6377 FAX (330) 345-6725 EMAIL sjl@sjl-inc.com

DRAWN C. Faib	CHECKED	SCALE 1" = 100'	DATE 05/21/13
DWG NO: EW-2423-ANNEX		JOB NO: EW-2423	
			SHEET 1 OF 1