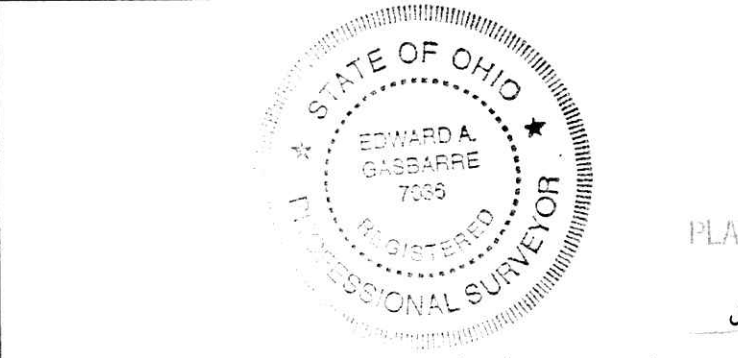
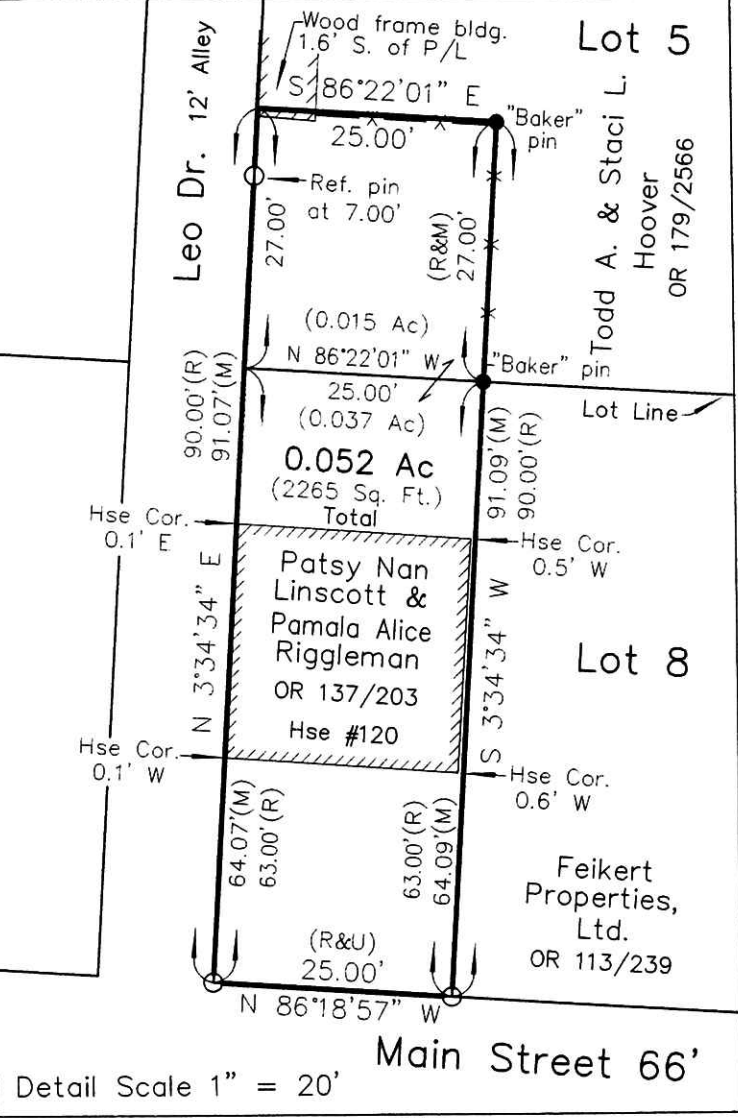


APPROVED FOR TRANSFER ONLY
 NO SUBDIVISION PLAT REQUIRED
 (O.R.C. 711.001 & 711.131)
 Lot(s) not for building use
 approved by Board of Health
 HOLMES CO. PLANNING COMMISSION
 By Q13 Date 3-7-13

201300085155
 B: 19 P: 2325
 FILED FOR RECORD IN
 HOLMES COUNTY, OH
 ANITA HALL, COUNTY RECORDER
 09/10/2013 11:08 AM
 SMALL PLAT - 40.00
 PAGES: 1
 ORV 246 P42891

Survey Ref.
 Plat Vol. 17, Pg. 559
 Plat Vol. 18, Pg. 796
 Deed Vol. 137/203
 Official Record 113, pg. 239
 Official Record 179, Pg. 2566
 "Baker" survey dated 9/17/1990
 "Baker" survey dated 7/15/2008



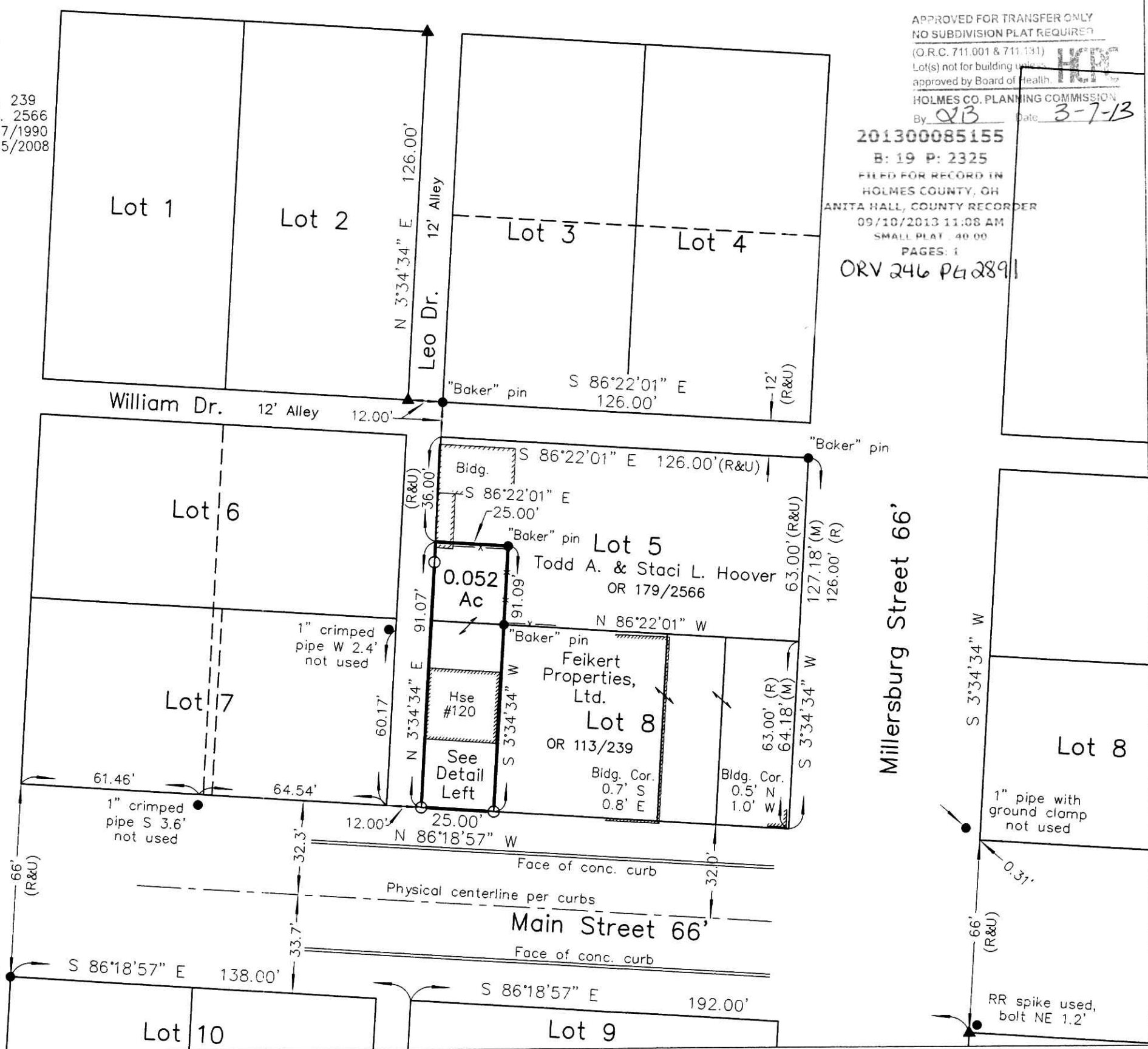
Detail Scale 1" = 20'
 Main Street 66'



PLAT APPROVED
3/6/2013

I believe this survey to be correct to the best of my knowledge.
Edward A. Gasbarre
 Edward A. Gasbarre, P.S. 7036
 Date 2/12/13

Vermillion Street 47' (S.R. 83)



Millersburg Street 66'

Linscott & Riggleman Survey
 Village of Holmesville
 SW Pt. Lot 5 and W Pt. Lot 8
 Prairie Twp, SE Qtr. Section 3, T-13N, R-13W
 Holmes County, Ohio

Legend

- set
- ∅ set previously
- found
- △ - Spike or magnail set
- ▲ - Spike or magnail found
- 5/8"x30" Steel Rod W/Yellow I.D. Cap Marked "Gasbarre Wooster, Ohio"
- * - Fence Line Evident
- - Iron/Steel monument found Described in Drawing
- M - Record Dimension
- M - Measured Dimension
- - Stone monument found
- U - Used Record Dimension

Scale 1" = 40'

Basis of Bearings Common with plat volume 17, page 559.
 Drawing 213007.dwg
 February 12, 2013

R.W. **Gasbarre & Associates, Inc.**
 Professional Land Surveying
 401 South Market St. - P.O. Box 44
 Wooster, Ohio 44691
 PH 330-264-9499

