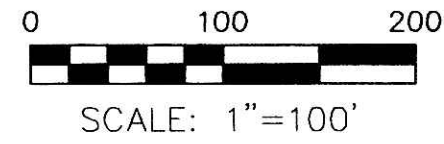


RAY-MAR HERITAGE HILLS SUBDIVISION
PART LOTS 19 & 20 PHASE IV (P.2-395)
PART LOT 24 PHASE IV (P.19-1095, 1096)

HARDY TOWNSHIP
2ND. QTR., LOT 1
T-9 N, R-7 W
HOLMES COUNTY, OHIO

SURVEYED FOR: TOM BIRD



- ▲ R.R. SPIKE FOUND
- 5/8" REBAR FOUND UNLESS OTHERWISE NOTED
- 5/8" REBAR SET WITH I.D. CAP I.D. CAP MARKED "BAKER 6938"

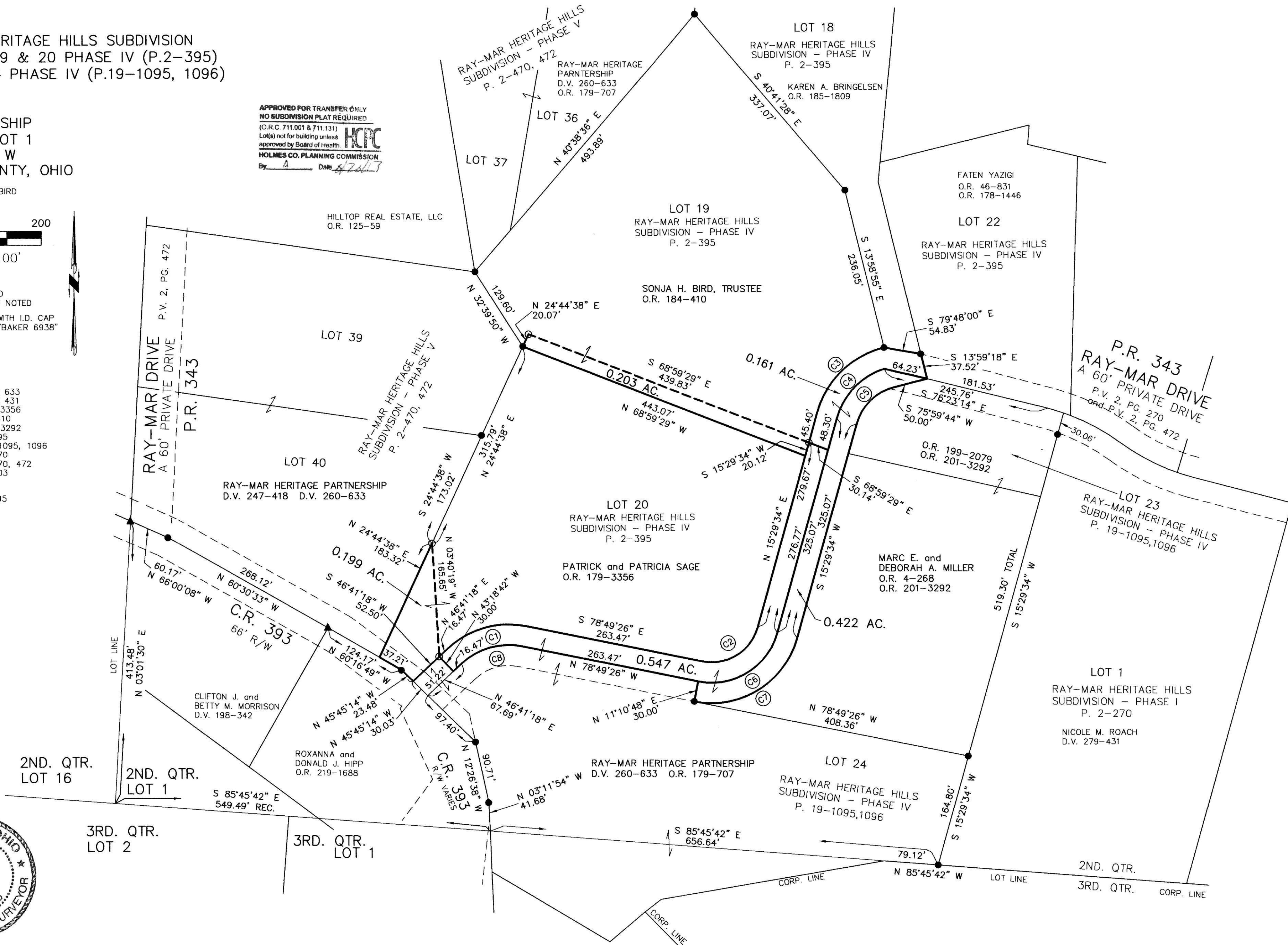
REFERENCES

- DEED VOL. 260 PAGE 633
 - DEED VOL. 279 PAGE 431
 - O.R. VOL. 179 PAGE 3356
 - O.R. VOL. 184 PAGE 410
 - O.R. VOL. 201 PAGE 3292
 - PLAT VOL. 2 PAGE 395
 - PLAT VOL. 19 PAGE 1095, 1096
 - PLAT VOL. 2 PAGE 270
 - PLAT VOL. 2 PAGE 470, 472
 - PLAT VOL. 2 PAGE 303
- BEARINGS FROM
PLAT VOL. 2 PAGE 395

APPROVED FOR TRANSFER ONLY
NO SUBDIVISION PLAT REQUIRED
(O.R.C. 711.001 & 711.131)
Lot(s) not for building unless
approved by Board of Health
HOLMES CO. PLANNING COMMISSION
By: *[Signature]* Date: 1/24/12



ORV 246 pgs 2031,
2033, 2035
2037, 2039



I CERTIFY THIS SURVEY TO BE CORRECT
TO THE BEST OF MY KNOWLEDGE.

[Signature]
DONALD C. BAKER P.S. 6938
DATE: JANUARY 24, 2012
FDB\CJG
FILE NAME: WORK4\S-39A-12



CURVE	DELTA ANGLE	RADIUS	ARC LENGTH	TANGENT	CHORD LENGTH	CHORD BEARING
C1	54°29'19"	130.00'	123.63'	66.94'	119.02'	N 73°55'55" E
C2	85°41'14"	70.00'	104.69'	64.92'	95.20'	N 58°20'11" E
C3	60°30'12"	135.00'	142.56'	78.73'	136.03'	N 45°44'40" E
C4	56°43'51"	105.00'	103.96'	56.69'	99.77'	N 43°51'30" E
C5	60°30'12"	75.00'	79.20'	43.74'	75.57'	S 45°44'40" W
C6	85°41'14"	100.00'	149.55'	92.74'	136.00'	S 58°20'11" W
C7	85°41'14"	130.00'	194.42'	120.57'	176.80'	S 58°20'11" W
C8	54°29'19"	100.00'	95.10'	51.49'	91.56'	S 73°55'55" W

DONALD C. BAKER SURVEYING
138 N. CLAY STREET
MILLERSBURG, OHIO 44654
PH. 330-674-4788
FAX 330-674-6027

PLAT APPROVED
[Signature] 8/19/2013