

SCALE: 1"=200'

- ▲ R.R. SPIKE FOUND
- 5/8" REBAR FOUND UNLESS OTHERWISE NOTED
- △ R.R. SPIKE SET
- 5/8" REBAR SET WITH I.D. CAP I.D. CAP MARKED "BAKER 6938"

REFERENCES  
 O.R. VOL. 244 PAGE 1751  
 O.R. VOL. 244 PAGE 1775  
 PLAT VOL. 2 PAGE 526  
 BEARINGS FROM PLAT VOL. 2 PAGE 526



I CERTIFY THIS SURVEY TO BE CORRECT TO THE BEST OF MY KNOWLEDGE.

*Donald C. Baker*  
 DONALD C. BAKER P.S. 6938

DATE: JUNE 21, 2013  
 KES\CJG  
 DATA FILE NAME: WORK4\S-197-13\DB-MD  
 261-13

ORIGINAL PLAT FILED WITH MAP OFFICE ANITA HALL, RECORDER

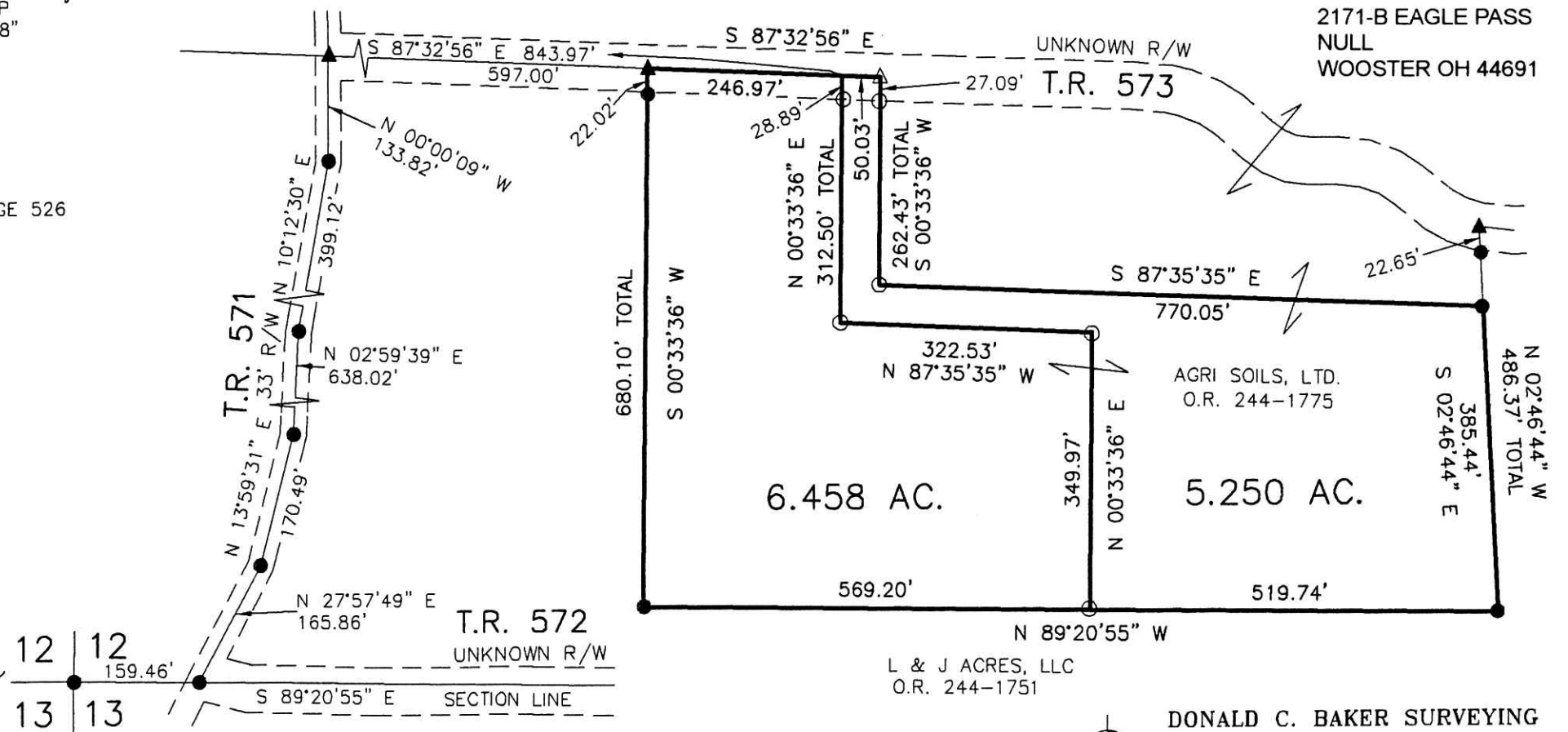
PRAIRIE TOWNSHIP  
 S.E. QTR. SECTION 12  
 T-13 N; R-13 W  
 HOLMES COUNTY, OHIO

SURVEYED FOR: AGRI SOILS, LTD.

APPROVED FOR TRANSFER ONLY  
 NO SUBDIVISION PLAT REQUIRED  
 (O.R.C. 711.001 & 711.131)  
 Lot(s) not for building unless approved by Board of Health.  
**HCP**  
 HOLMES CO. PLANNING COMMISSION  
 By: *[Signature]* Date: *7/24/13*

201300084772  
 B: 19 P: 2308  
 FILED FOR RECORD IN  
 HOLMES COUNTY, OH  
 ANITA HALL, COUNTY RECORDER  
 08/14/2013 12:02 PM  
 SMALL PLAT . 40.00  
 PAGES: 1  
 B246 P769  
 B246 P780

LOGEE HOSTETLER STUTZMAN  
 2171-B EAGLE PASS  
 NULL  
 WOOSTER OH 44691



L & J ACRES, LLC  
O.R. 244-1751



DONALD C. BAKER SURVEYING  
 138 N. CLAY STREET  
 MILLERSBURG, OHIO 44654  
 PH. 330-674-4788  
 FAX 330-674-6027

PLAT APPROVED

*7/24/2013*