

SCALE: 1"=200'

- STONE FOUND
- 5/8" REBAR FOUND UNLESS OTHERWISE NOTED
- 5/8" REBAR SET WITH I.D. CAP I.D. CAP MARKED "BAKER 6938"



I CERTIFY THIS SURVEY TO BE CORRECT TO THE BEST OF MY KNOWLEDGE.

Donald C. Baker
 DONALD C. BAKER P.S. 6938
 DATE: FEBRUARY 20, 2013
 FDB\CJG
 FILE NAME: WORK5-2012\S-67-13\DB-MD



DONALD C. BAKER SURVEYING
 138 N. CLAY STREET
 MILLERSBURG, OHIO 44654
 PH. 330-674-4788
 FAX 330-674-6027
 EMAIL: bakersurveying@gmail.com

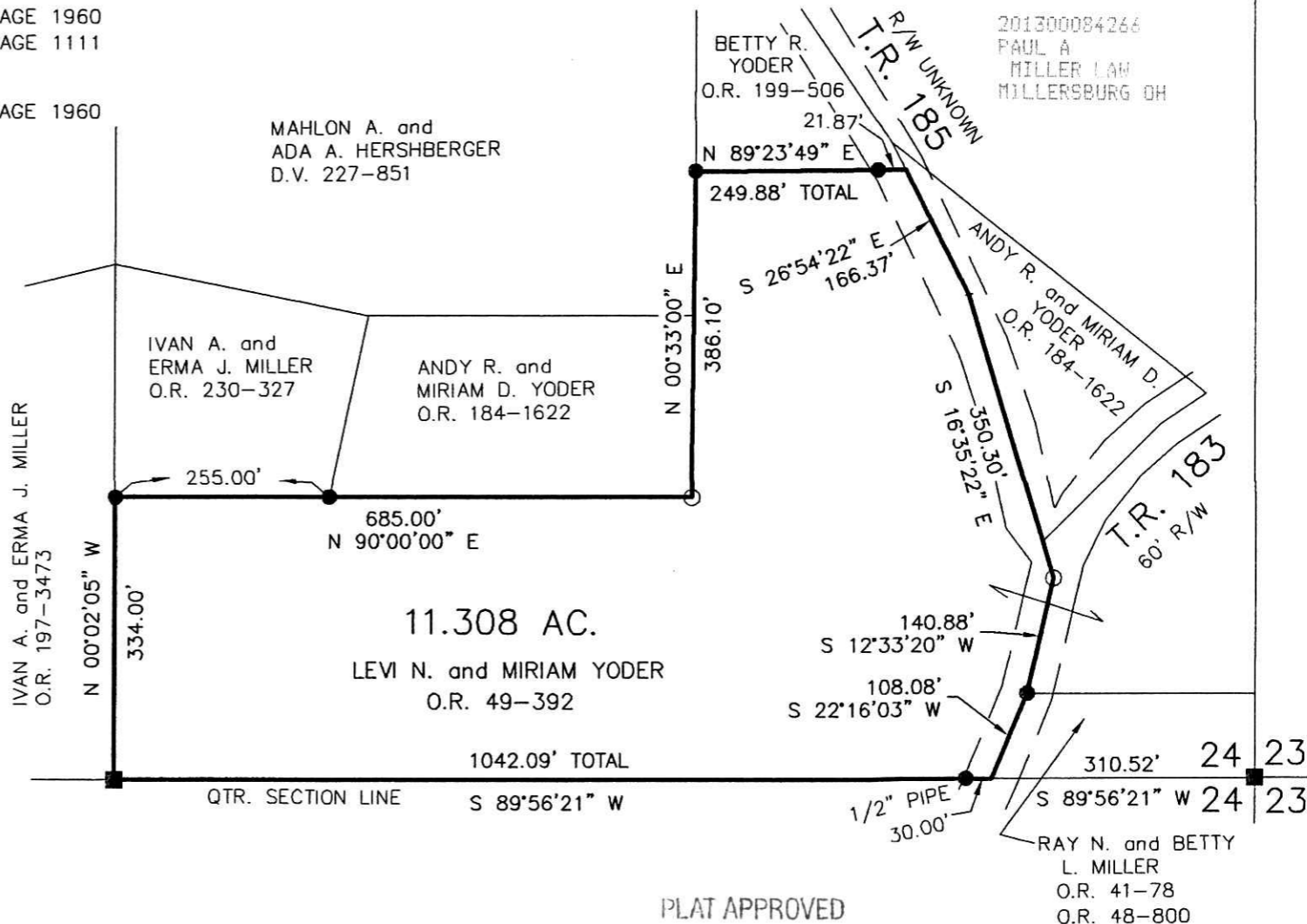
REFERENCES
 O.R. VOL. 49 PAGE 392
 O.R. VOL. 184 PAGE 1622
 PLAT VOL. 5 PAGE 43
 PLAT VOL. 7 PAGE 755
 PLAT VOL. 17 PAGE 285
 PLAT VOL. 19 PAGE 1064
 PLAT VOL. 19 PAGE 1960
 PLAT VOL. 19 PAGE 1111
 BEARINGS FROM
 PLAT VOL. 19 PAGE 1960

CLARK TOWNSHIP
 N.E. QTR. SECTION 24
 T-8 N; R-5 W
 HOLMES COUNTY, OHIO

SURVEYED FOR: ELI TROYER

201300084266
 Filed for Record in
 HOLMES COUNTY, OH
 ANITA HALL, COUNTY RECORDER
 07-15-2013 At 11:07 am.
 SMALL PLAT 40.00
 OR Book 19 Page 2293 - 2293

CR 245p 717



PLAT APPROVED

6/5/2013