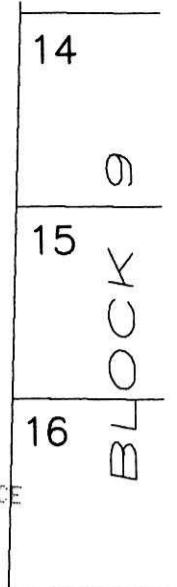


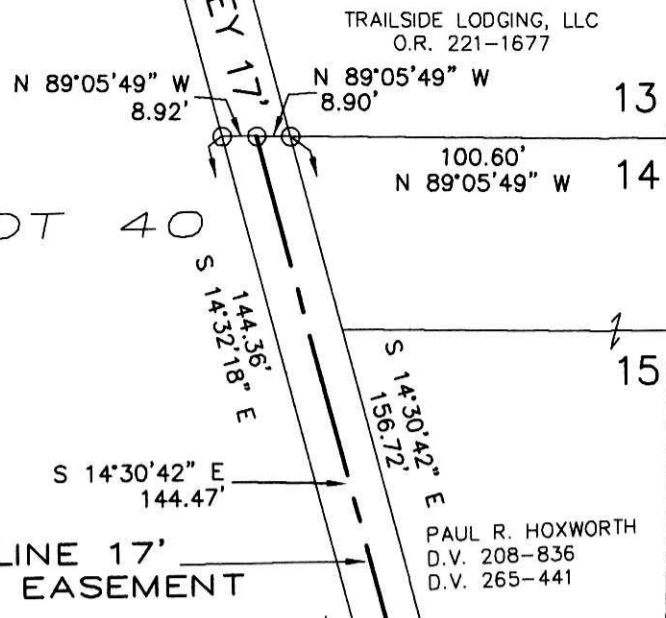
BLOCK 12

ACCESS EASEMENT PLAT
VILLAGE OF MILLERSBURG
PLEASANT VIEW GLASS PLANT ADDITION
PLAT VOL. 1 PG. 357-362

HARDY TOWNSHIP
1ST. QTR., LOT 47
T-9 N, R-7 W
HOLMES COUNTY, OHIO
SURVEYED FOR: BANDS CO.



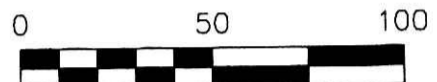
OUTLOT 40



CENTERLINE 17'
ACCESS EASEMENT

GARRISON ALLEY 20'

201300084173
SAMUEL STEIMEL LAW OFFICE
MILLERSBURG OH 44654



SCALE: 1"=50'

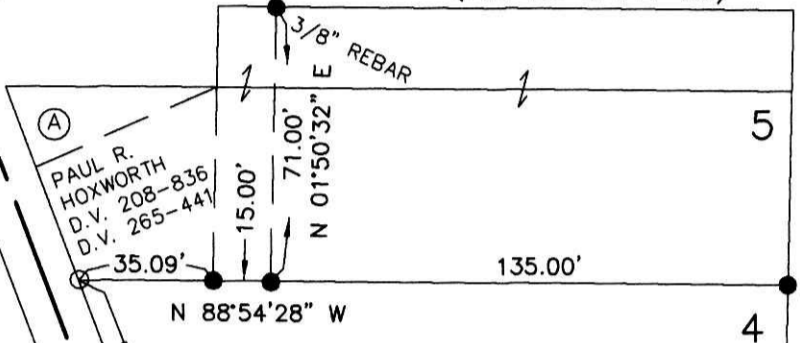
- 5/8" REBAR FOUND UNLESS OTHERWISE NOTED
- 5/8" REBAR SET WITH I.D. CAP I.D. CAP MARKED "BAKER 6938"

REFERENCES

- O.R. VOL. 106 PAGE 335
- O.R. VOL. 182 PAGE 212
- PLAT VOL. 19 PAGE 1740
- PLAT VOL. 8 PAGE 496
- PLAT VOL. 2 PAGE 26
- PLAT VOL. 14 PAGE 4
- PLAT VOL. 18 PAGE 225
- PLAT VOL. 16 PAGE 637
- PLAT VOL. 19 PAGE 402
- BEARINGS FROM PLAT VOL. 19 PAGE 402

(A) VILLAGE OF MILLERSBURG
D.V. 207-416, 420

STREET 20' (ORD. 737 10/4/1948)
(P.2-26 & P.4-59)

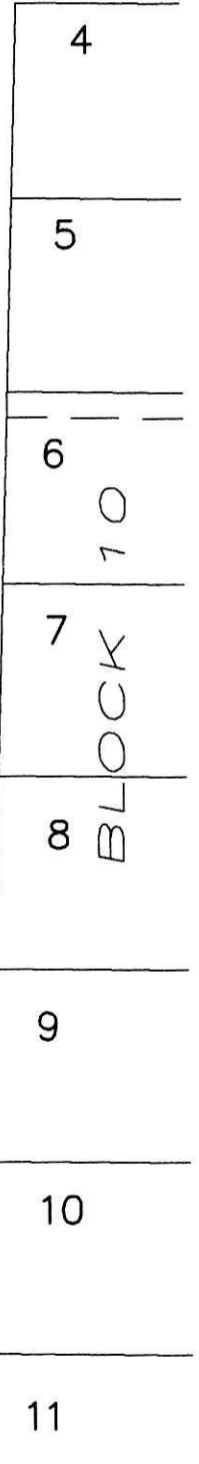


BLOCK 11

FLOYD H. and MARGARET S.
VANSICKLE O.R. 200-762

JOHN W. and
JUDY M. UMSTEAD
O.R. 11-36

FORLOW AVENUE 60'



OUTLOT 41

201300084173
Filed for Record in
HOLMES COUNTY, OH
ANITA HALL, COUNTY RECORDER
07-10-2013 At 09:02 am.
SMALL PLAT 40.00
OR Book 19 Page 2286 - 2286

TRAIL SIDE LODGING, LLC
O.R. 182-212

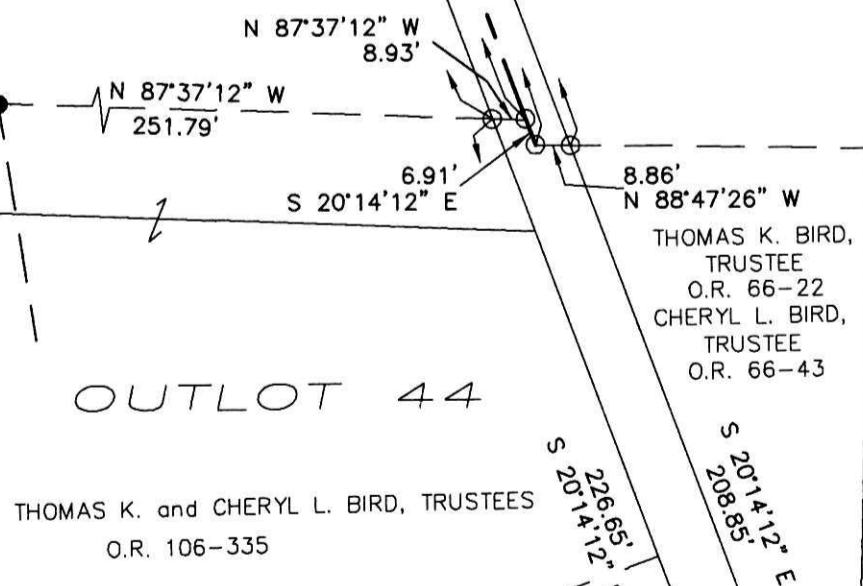
ORV 245 pg 224



I CERTIFY THIS SURVEY TO BE CORRECT
TO THE BEST OF MY KNOWLEDGE.

A.L.G.
AARON L. GERBER P.S. 8379
DATE: AUGUST 9, 2012
ALG\CJG\JNG\DCB2
FILE NAME: WORK5-2012\S-124-12\DB-MD

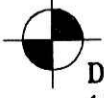
OUTLOT 44



THOMAS K. and CHERYL L. BIRD, TRUSTEES
O.R. 106-335

THOMAS K. BIRD,
TRUSTEE
O.R. 66-22
CHERYL L. BIRD,
TRUSTEE
O.R. 66-43

THOMAS K. BIRD, TRUSTEE
O.R. 66-22
CHERYL L. BIRD, TRUSTEE
O.R. 66-43



DONALD C. BAKER SURVEYING
138 N. CLAY STREET
MILLERSBURG, OHIO 44654
PH. 330-674-4788
FAX 330-674-6027
EMAIL: bakersurveying@gmail.com

Exhibit 14

PLAT APPROVED
3/18/2013 *[Signature]*