

201300082952
 Filed for Record in
 HOLMES COUNTY, OH
 ANITA HALL, COUNTY RECORDER
 04-26-2013 At 09:26 am.
 SMALL PLAT 40.00
 OR Book 19 Page 2249 - 2249

OR 243 p 578

201300082952
 CRITCHFIELD...
 & JOHNSTON ATTYS
 MILLERSBURG OH

**RICHLAND TOWNSHIP
 N.E. QTR. SECTION 16
 T-8 N; R-8 W
 HOLMES COUNTY, OHIO**

SURVEYED FOR: DAN BYLER

REFERENCES:

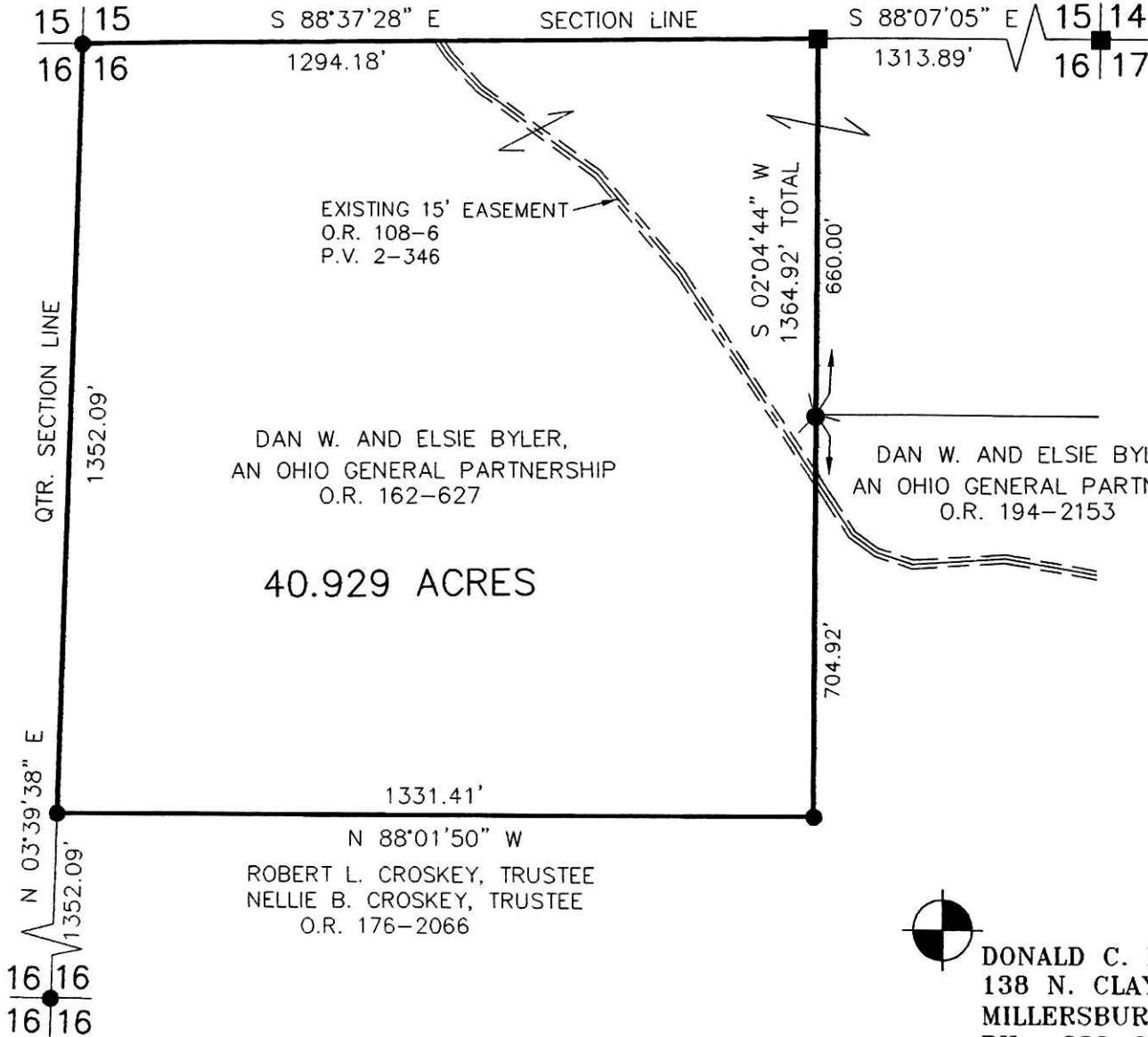
- O.R. VOL. 162 PAGE 627
- O.R. VOL. 176 PAGE 2066
- O.R. VOL. 194 PAGE 2153
- PLAT VOL. 2 PAGE 346
- PLAT VOL. 19 PAGE 929
- PLAT VOL. 14 PAGE 43
- PLAT VOL. 2 PAGE 388
- BEARINGS FROM
 PLAT VOL. 19 PAGE 929

0 300 600



SCALE: 1"=300'

- P.K. NAIL FOUND
- STONE FOUND
- 5/8" REBAR FOUND
 UNLESS OTHERWISE NOTED



40.929 ACRES

APPROVED FOR TRANSFER ONLY
 NO SUBDIVISION PLAT REQUIRED

(O.R.C. 711.001 & 711.131)
 Lot(s) not for building unless
 approved by Board of Health.
 HOLMES CO. PLANNING COMMISSION
 By: *DB* Date: *4-23-13*



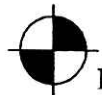
I CERTIFY THIS SURVEY TO BE CORRECT TO THE BEST OF MY KNOWLEDGE.

Donald C. Baker

DONALD C. BAKER PS 6938

DATE: FEB. 9, 2007

File Name: C:\JOBS\S-92-07



DONALD C. BAKER SURVEYING
 138 N. CLAY ST.
 MILLERSBURG, OH 44654
 PH. 330-674-4788
 FAX: 330-674-6027

PLAT APPROVED

4/19/2013