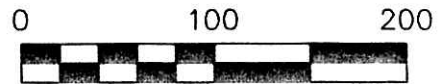
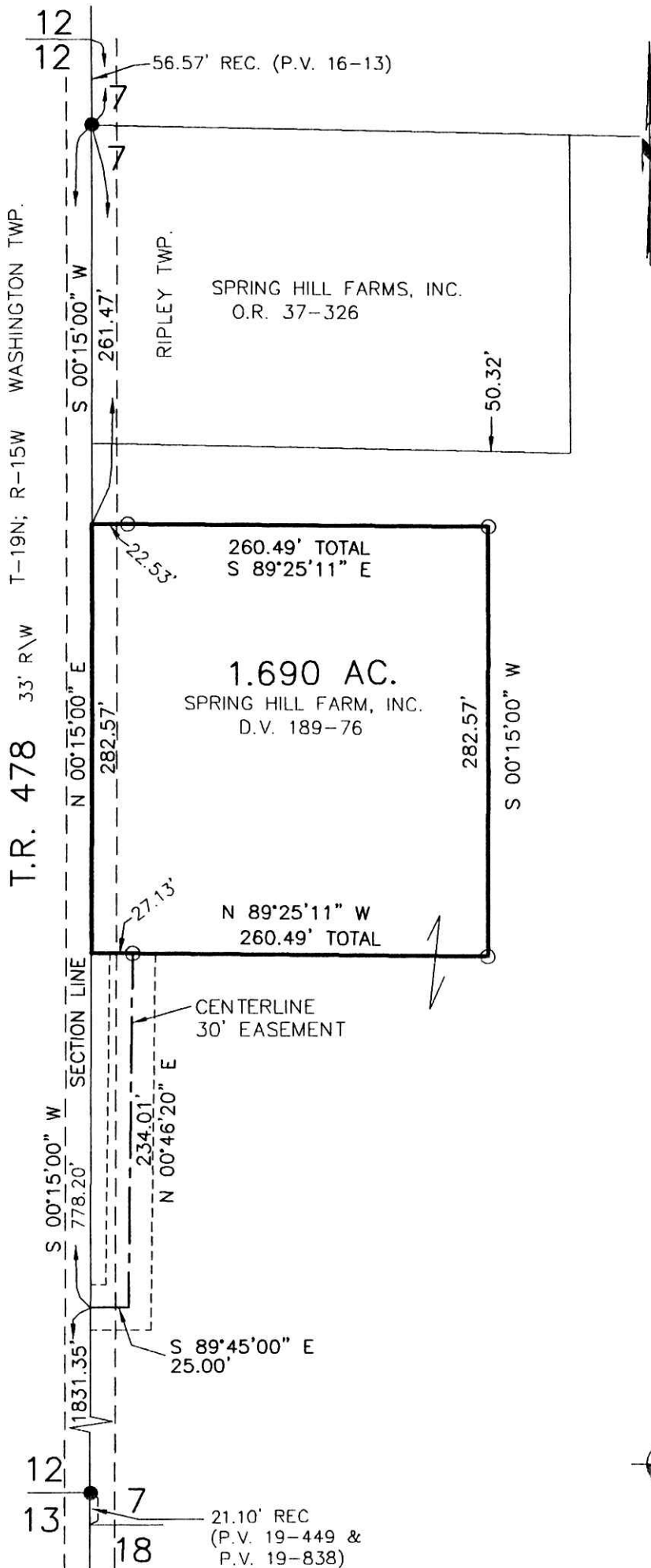


RIPLEY TOWNSHIP
S.W. QTR. SECTION 7
T-17 N; R-14 W
HOLMES COUNTY, OHIO

SURVEYED FOR: KAREN LANG

201300082081
Filed for Record in
HOLMES COUNTY, OH
ANITA HALL, COUNTY RECORDER
02-28-2013 At 02:01 pm.
SMALL PLAT 40.00
OR Book 19 Page 2219 - 2219

OR 241 p 3132



SCALE: 1"=100'

- 5/8" REBAR FOUND
UNLESS OTHERWISE NOTED
- 5/8" REBAR SET WITH I.D. CAP
I.D. CAP MARKED "BAKER 6938"

REFERENCES

DEED VOL. 189 PAGE 76
O.R. VOL. 37 PAGE 326
PLAT VOL. 12 PAGE 965
PLAT VOL. 16 PAGE 13

BEARINGS FROM
PLAT VOL. 12 PAGE 965

201300082081
SAMUEL M STEINEL ATTY
MILLERSBURG OH



I CERTIFY THIS SURVEY TO BE CORRECT
TO THE BEST OF MY KNOWLEDGE.

Donald C Baker
DONALD C. BAKER P.S. 6938
DATE: DEC. 11, 2012
FDB\KES
FILE NAME: WORK4\S-575-12



DONALD C. BAKER SURVEYING
138 N. CLAY STREET
MILLERSBURG, OHIO 44654
PH. 330-674-4788
FAX 330-674-6027

PLAT REPRODUCED

1/3/2013