

SCALE: 1"=200'

- 5/8" REBAR FOUND UNLESS OTHERWISE NOTED
- 5/8" REBAR SET WITH I.D. CAP I.D. CAP MARKED "BAKER 6938"



RESURVEY DEED VOL. 155 PG. 507 AND O.R. VOL. 223 PG. 1264.

PRAIRIE TOWNSHIP  
N.W. QTR. SECTION 31  
T-14 N; R-13 W  
HOLMES COUNTY, OHIO

APPROVED FOR TRANSFER ONLY  
NO SUBDIVISION PLAT REQUIRED

(O.R.C. 711.001 & 711.131)

Lot(s) not for building unless approved by Board of Health.



HOLMES CO. PLANNING COMMISSION  
By JB Date 2-4-13

SURVEYED FOR: ROSEMARY BRUCE

REFERENCES

DEED VOL. 155 PAGE 507  
O.R. VOL. 223 PAGE 1264

201300081866  
MONROE STREET  
TITLE  
MILLERSBURG OH

PLAT VOL. 8 PAGE 274  
PLAT VOL. 12 PAGE 526  
PLAT VOL. 16 PAGE 299  
BEARINGS FROM PLAT VOL. 12 PAGE 526

201300081866  
Filed for Record in  
HOLMES COUNTY, OH  
ANITA HALL, COUNTY RECORDER  
02-12-2013 At 11:56 am.  
SMALL PLAT 40.00  
OR Book 19 Page 2209 - 2209

OR 2419198



I CERTIFY THIS SURVEY TO BE CORRECT TO THE BEST OF MY KNOWLEDGE.

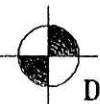
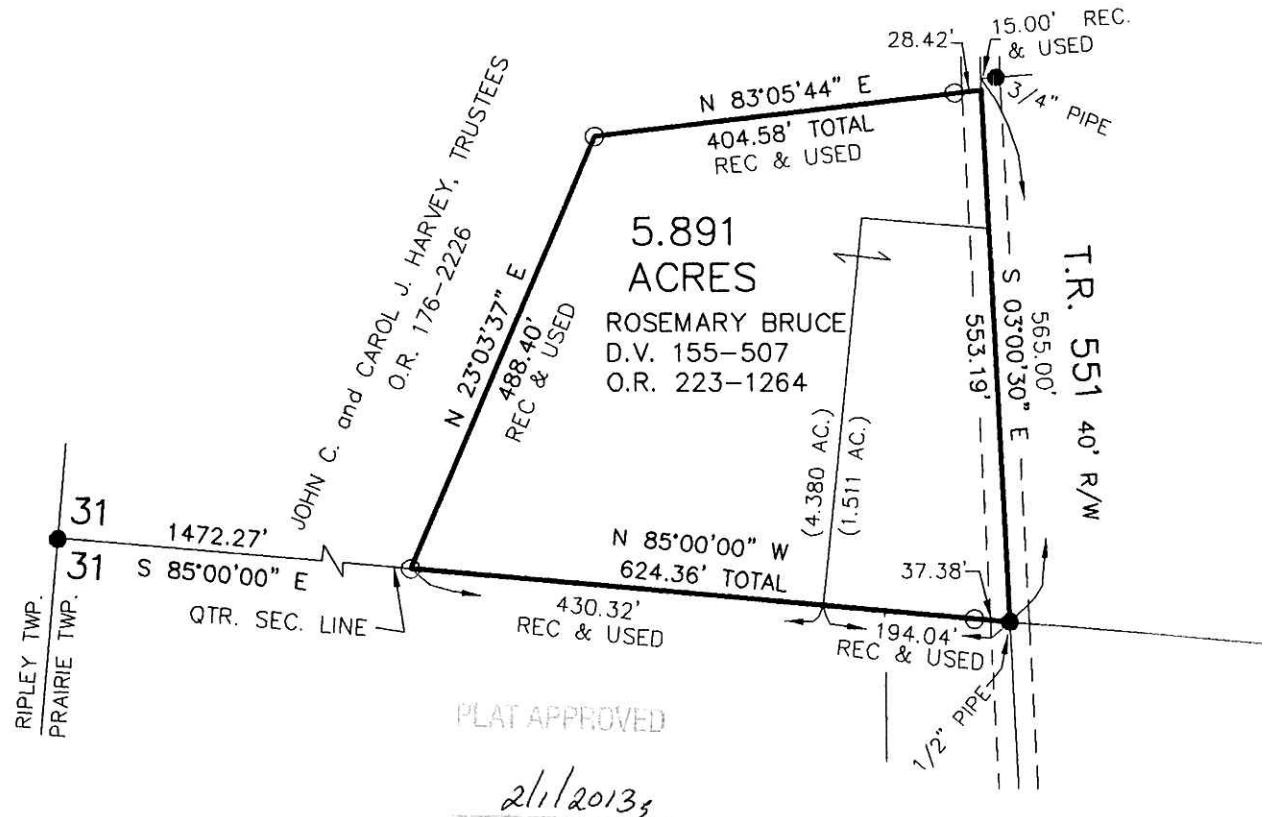
*Donald C. Baker*

DONALD C. BAKER P.S. 6938

DATE: JANUARY 25, 2013

FDB\KES

FILE NAME: WORK4\S-50-13\MLD



DONALD C. BAKER SURVEYING  
138 N. CLAY STREET  
MILLERSBURG, OHIO 44654  
PH. 330-674-4788  
FAX 330-674-6027

PLAT APPROVED

2/1/2013