

0 60 120



SCALE: 1"=60'

- STONE FOUND
- 1/2" PINCH TOP FOUND UNLESS OTHERWISE NOTED
- 5/8" REBAR SET WITH I.D. CAP I.D. CAP MARKED "BAKER 6938"



PAINT TOWNSHIP
4TH. QTR., LOTS 4 & 5
T-10 N; R-5 W
HOLMES COUNTY, OHIO

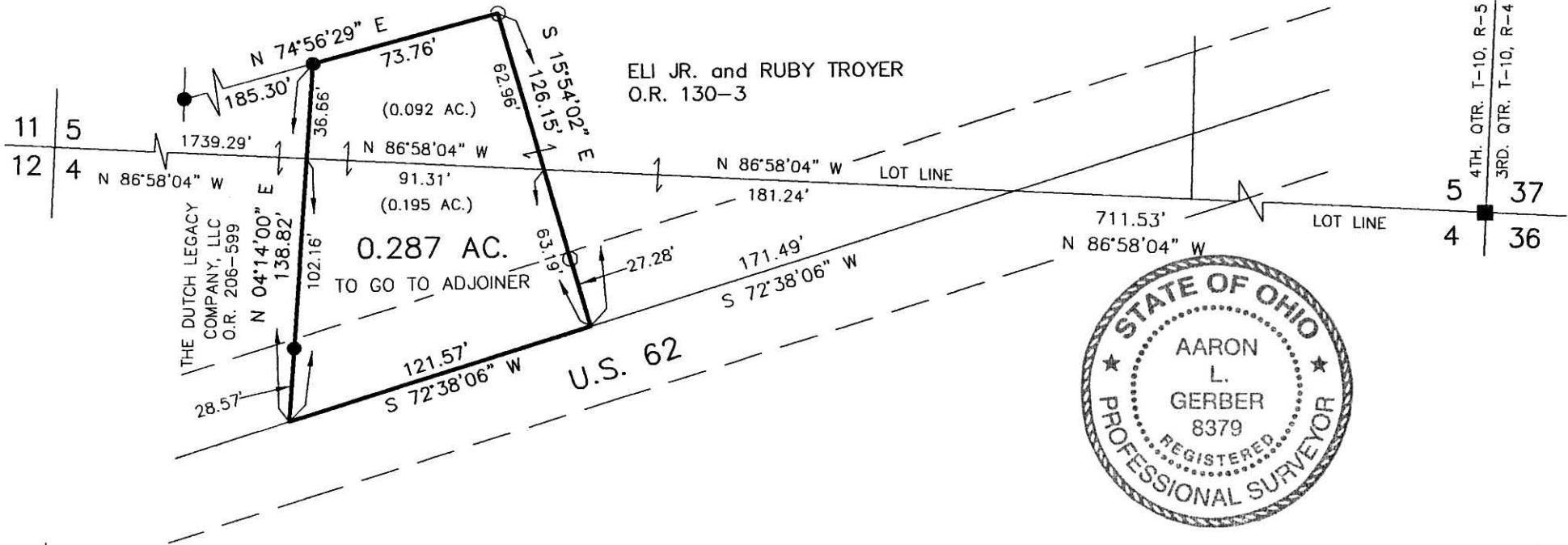
SURVEYED FOR: ELI TROYER

REFERENCES

- O.R. VOL. 130 PAGE 3
- O.R. VOL. 206 PAGE 599
- PLAT VOL. 8 PAGE 271
- BEARINGS FROM PLAT VOL. 19 PAGE 1784

201200081226
Filed for Record in
HOLMES COUNTY, OH
ANITA HALL, COUNTY RECORDER
12-28-2012 At 12:01 pm.
SMALL PLAT 40.00
OR Book 19 Page 2189 - 2189
ORV 240 PAGE 1886

201200081226
HEARTLAND TITLE
MILLERSBURG OH 44654



I CERTIFY THIS SURVEY TO BE CORRECT TO THE BEST OF MY KNOWLEDGE.

A.L.G.
 AARON L. GERBER P.S. 8379
 DATE: DECEMBER 3, 2012
 ALG\CJG
 FILE NAME: WORK5-2012\S-591-12\MLD

DONALD C. BAKER SURVEYING
 138 N. CLAY STREET
 MILLERSBURG, OHIO 44654
 PH. 330-674-4788
 FAX 330-674-6027
 EMAIL: bakersurveying@gmail.com

PLAT APPROVED

12/13/2012