

SALT CREEK TOWNSHIP
S.E. QTR. SECTION 36
T-15 N; R-12 W
HOLMES COUNTY, OHIO

SURVEYED FOR: WAYNE YODER



SCALE: 1"=100'

- ▲ R.R. SPIKE FOUND
- 5/8" REBAR FOUND UNLESS OTHERWISE NOTED
- 5/8" REBAR SET WITH I.D. CAP I.D. CAP MARKED "BAKER 6938"

REFERENCES

DEED VOL. 258 PAGE 459
DEED VOL. 260 PAGE 395
O.R. VOL. 51 PAGE 782
O.R. VOL. 55 PAGE 876
PLAT VOL. 7 PAGE 612
PLAT VOL. 17 PAGE 490
PLAT VOL. 14 PAGE 548
PLAT VOL. 18 PAGE 418
PLAT VOL. 2 PAGE 465
PLAT VOL. 10 PAGE 937
BEARINGS FROM PLAT VOL. 10 PAGE 937

201200081013
Filed for Record in
HOLMES COUNTY, OH.
ANITA HALL, COUNTY RECORDER
12-17-2012 AT 12:12 PM.
SMALL PLAT 40.00
OR Book 19 Page 2177 - 2177
ORV 240 PAGE 575

201200081013
PAUL MILLER ATTY
MILLERSBURG OH 44654

I CERTIFY THIS SURVEY TO BE CORRECT
TO THE BEST OF MY KNOWLEDGE.

Donald C. Baker

DONALD C. BAKER P.S. 6938

DATE: NOV. 5, 2012

FDB\CG

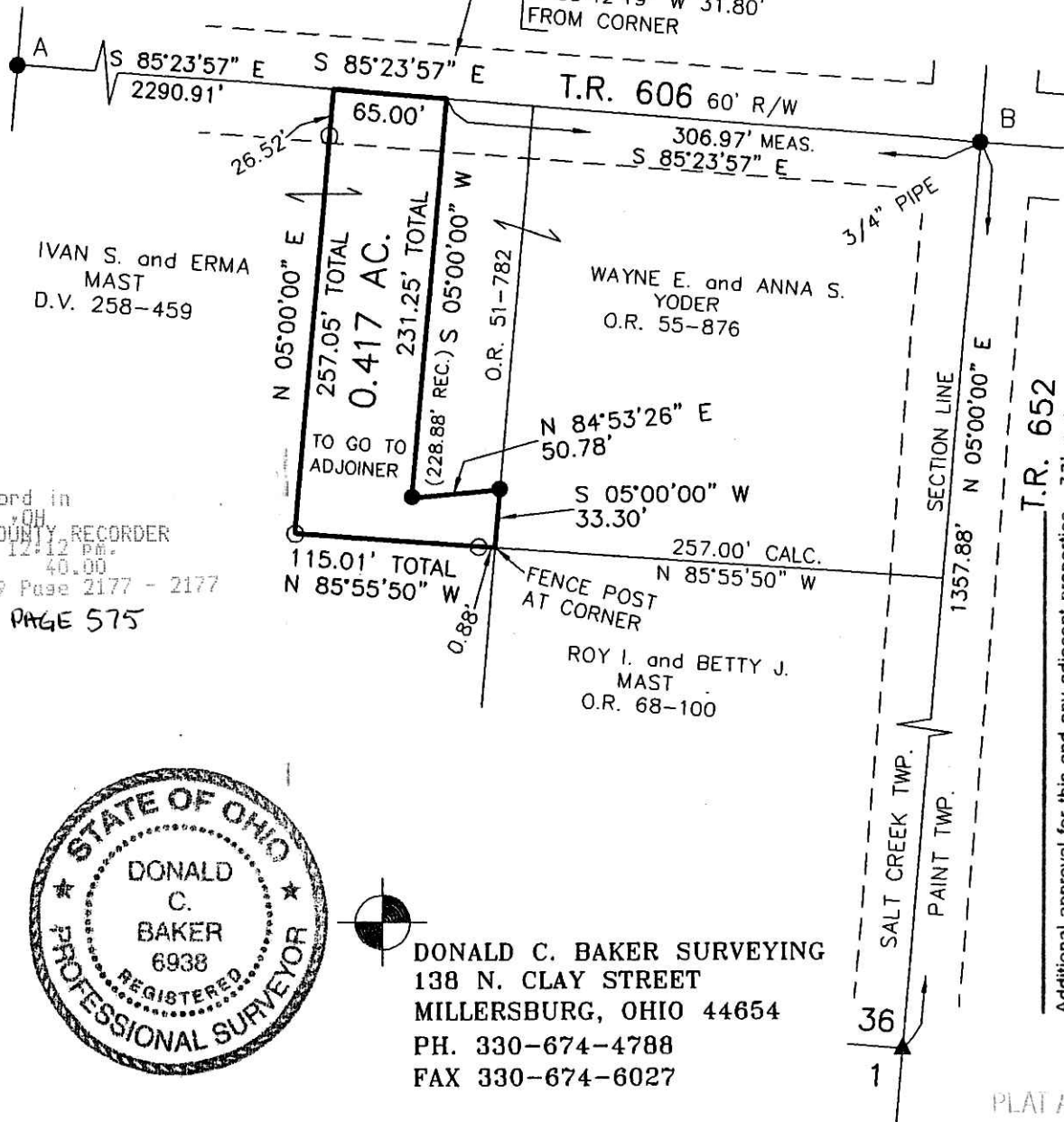
FILE NAME: WORK4\S-528-12



DONALD C. BAKER SURVEYING
138 N. CLAY STREET
MILLERSBURG, OHIO 44654
PH. 330-674-4788
FAX 330-674-6027

I HELD LINE A-B STRAIGHT AS SHOWN
ON PLATS 14-548, 18-418, 2-465 AND
ON D.V. 260-395 AND D.V. 258-459.

R.R. SPIKE FD.
S 10°42'09" W 1.93'
FROM CORNER
5/8" REBAR FD.
S 05°42'19" W 31.80'
FROM CORNER



APPROVED FOR TRANSFER ONLY
NO SUBDIVISION PLAT REQUIRED

(O.R.C. 711.001 & 711.131)
Lot(s) not for building unless
approved by Board of Health.



HOLMES CO. PLANNING COMMISSION

By *AB* Date 11-22-12

Additional approval for this and any adjacent properties
must be requested and granted prior to any future
transfers by deed. Recording of this document does not
waive the requirements of local Health District
Subdivision Regulations or other governing
authorities which may be in effect at the
time of any future deed transfer.



PLAT APPROVED

11/27/2012 *AB*