

0 200 400



SCALE: 1"=200'

■ STONE FOUND

● 5/8" REBAR FOUND
UNLESS OTHERWISE NOTED

○ 5/8" REBAR SET WITH I.D. CAP
I.D. CAP MARKED "BAKER 6938"

REFERENCES

O.R. VOL. 200 PAGE 1554
O.R. VOL. 200 PAGE 1564
PLAT VOL. 19 PAGE 1168
BEARINGS FROM PLAT VOL. 19 PAGE 1168



I CERTIFY THIS SURVEY TO BE CORRECT
TO THE BEST OF MY KNOWLEDGE.

Donald C Baker

DONALD C. BAKER P.S. 6938

DATE: OCTOBER 5, 2012

FDB\CJG

FILE NAME: WORK4\S-481-12\MLD

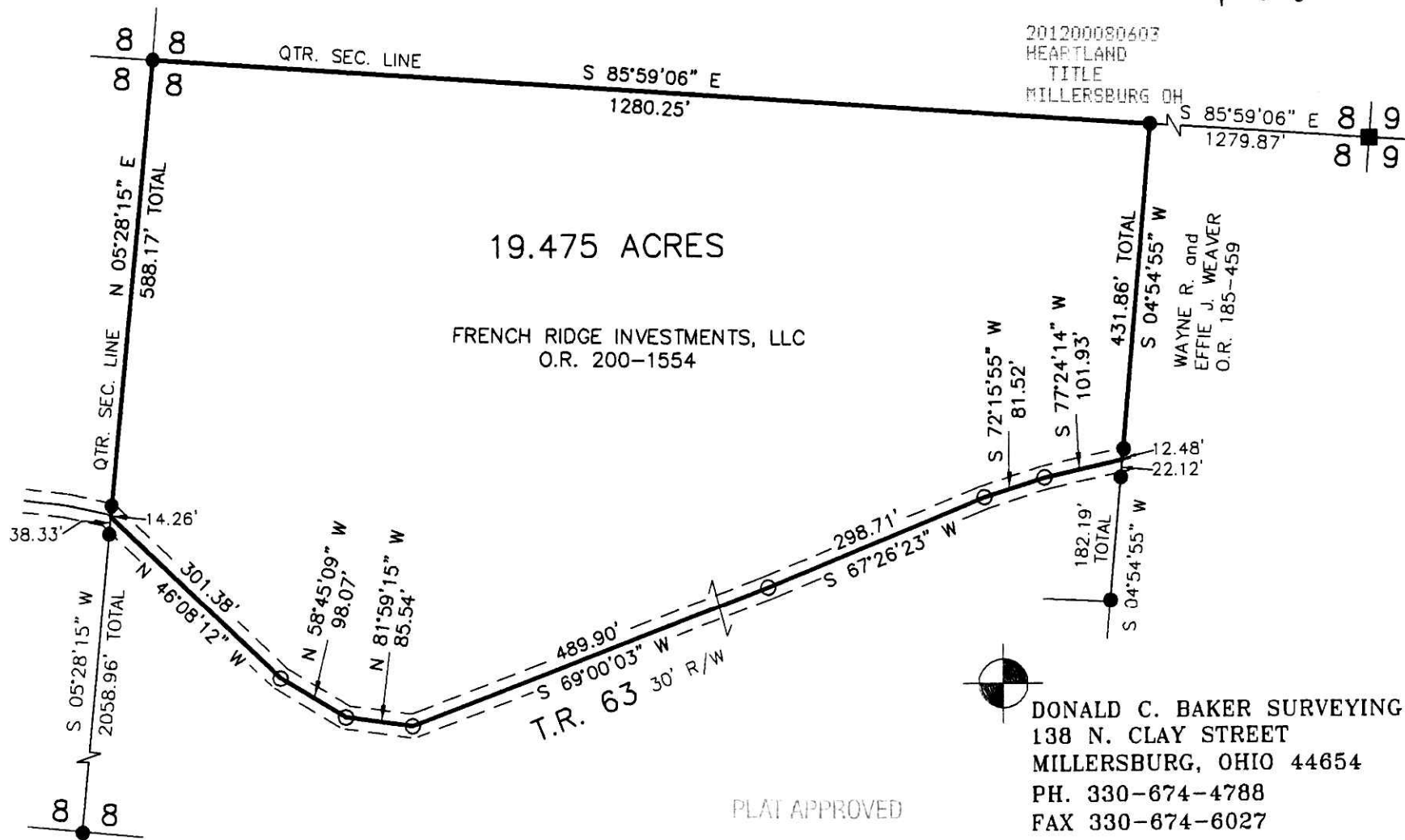
KILLBUCK TOWNSHIP
S.E. QTR. SECTION 8
T-8 N; R-8 W
HOLMES COUNTY, OHIO

SURVEYED FOR: FRENCH RIDGE INVESTMENTS, LLC

Instrument 201200080603 OR Book Page 19 2166

201200080603
Filed for Record in
HOLMES COUNTY, OH
ANITA HALL, COUNTY RECORDER
11-26-2012 At 09:15 am.
SMALL PLAT 40.00
OR Book 19 Page 2166 - 2166

OR 239p 1838



201200080603
HEARTLAND
TITLE
MILLERSBURG OH

19.475 ACRES

FRENCH RIDGE INVESTMENTS, LLC
O.R. 200-1554

WAYNE R. and
EFFIE J. WEAVER
O.R. 185-459

DONALD C. BAKER SURVEYING
138 N. CLAY STREET
MILLERSBURG, OHIO 44654
PH. 330-674-4788
FAX 330-674-6027

PLAT APPROVED

11/14/2012