

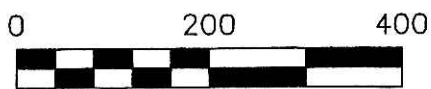
RICHLAND TOWNSHIP
 N.E. QTR. SECTION 2
 T-8 N; R-9 W
 HOLMES COUNTY, OHIO

Instrument 201200076633 OR Book Page 19 2052

SURVEYED FOR: KAUFMAN REALTY

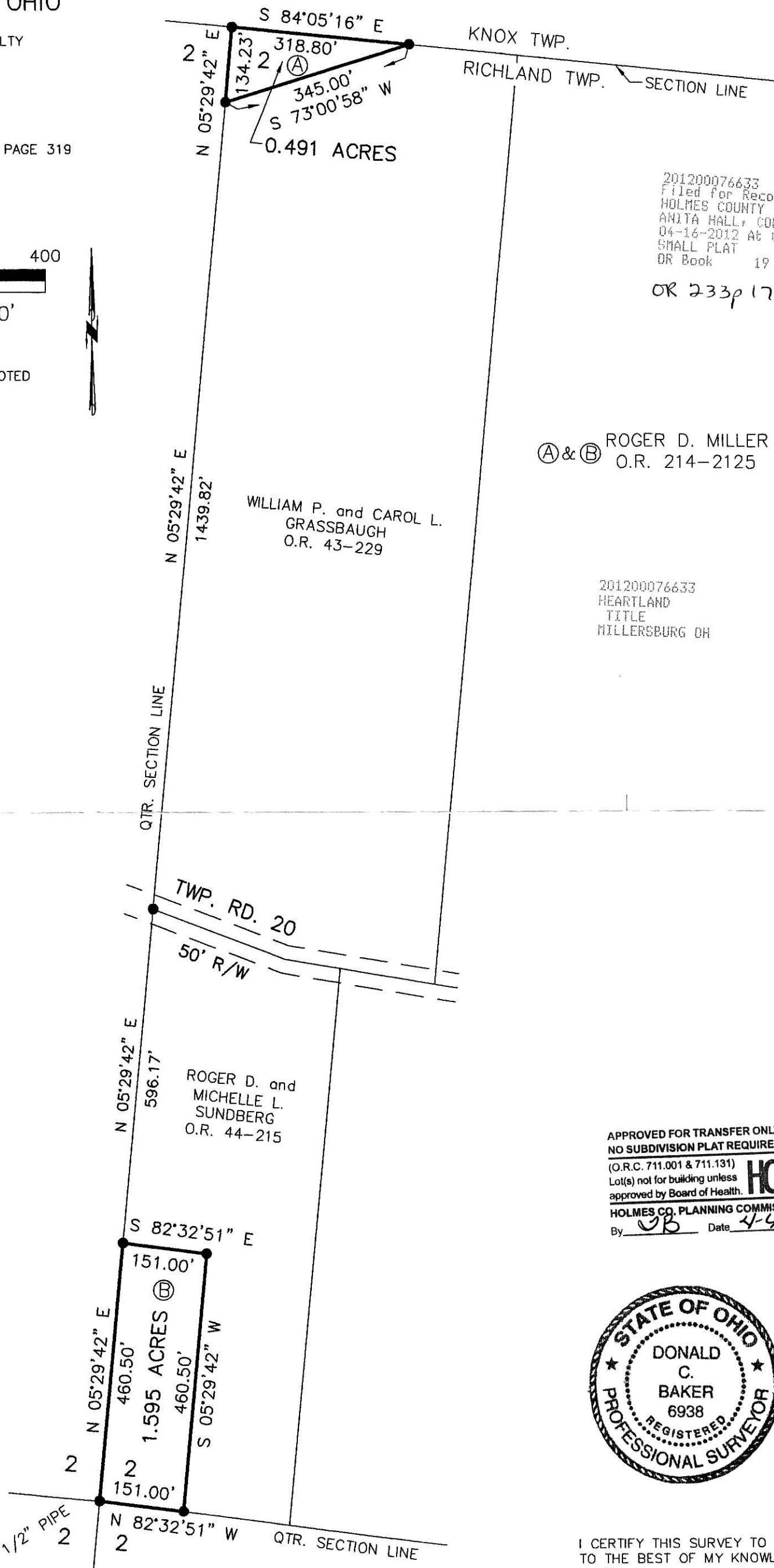
REFERENCES

O.R. VOL. 214 PAGE 2125
 PLAT VOL. 17 PAGE 319
 BEARINGS FROM PLAT VOL. 17 PAGE 319



SCALE: 1"=200'

● 5/8" REBAR FOUND
 UNLESS OTHERWISE NOTED



201200076633
 Filed for Record in
 HOLMES COUNTY, OH
 ANITA HALL, COUNTY RECORDER
 04-16-2012 At 02:30 pm.
 SMALL PLAT 40.00
 OR Book 19 Page 2052 - 2052
 OR 233p 1755

Ⓐ & Ⓑ ROGER D. MILLER
 O.R. 214-2125

201200076633
 HEARTLAND
 TITLE
 MILLERSBURG OH

APPROVED FOR TRANSFER ONLY
 NO SUBDIVISION PLAT REQUIRED
 (O.R.C. 711.001 & 711.131)
 Lot(s) not for building unless
 approved by Board of Health.
 HOLMES CO. PLANNING COMMISSION
 By DB Date 4-4-12



I CERTIFY THIS SURVEY TO BE CORRECT
 TO THE BEST OF MY KNOWLEDGE.

Donald C. Baker
 DONALD C. BAKER P.S. 6938
 DATE: MARCH 15, 2012
 ALG\DCB2
 FILE NAME: WORK3-2012\S-78-12\ALG

PLAT APPROVED

4/3/2012

DONALD C. BAKER SURVEYING
 138 N. CLAY STREET
 MILLERSBURG, OHIO 44654
 PH. 330-674-4788
 FAX 330-674-6027