

2nd QTR. 16 1
3rd QTR. 2 1

MAP OF SURVEY PART OF LOT 1 3rd QTR. T-9; R-7 VILLAGE OF MILLERSBURG HARDY TOWNSHIP HOLMES COUNTY, OHIO

Instrument 201200076631 OR Book Page 19 2051

201200076631
Filed for Record in
HOLMES COUNTY, OH
ANITA HALL, COUNTY RECORDER
04-16-2012 At 02:28 pm.
PLAT MED 43.20
OR Book 19 Page 2051 - 205
ORV 233 pg 1753



0' 50' 100' 200'
SCALE: 1" = 100'

- STONE FOUND
- × SPIKE FOUND
- I.P. OR PIPE FOUND
- 5/8" REBAR SET WITH I.D. CAP MARKED SJL INC
- R. = RECORD
- M. = MEASURED
- H. = HELD

REFERENCE SURVEY
VOL. 17; PG. 234
VOL. 17; PG. 763
O.R. 18; PG. 814
O.R. 19; PG. 988
O.R. 19; PG. 1584
O.R. 19; PG. 1777
BASIS OF BEARING for this survey based on grid north of the Ohio State Plane Coordinate System.

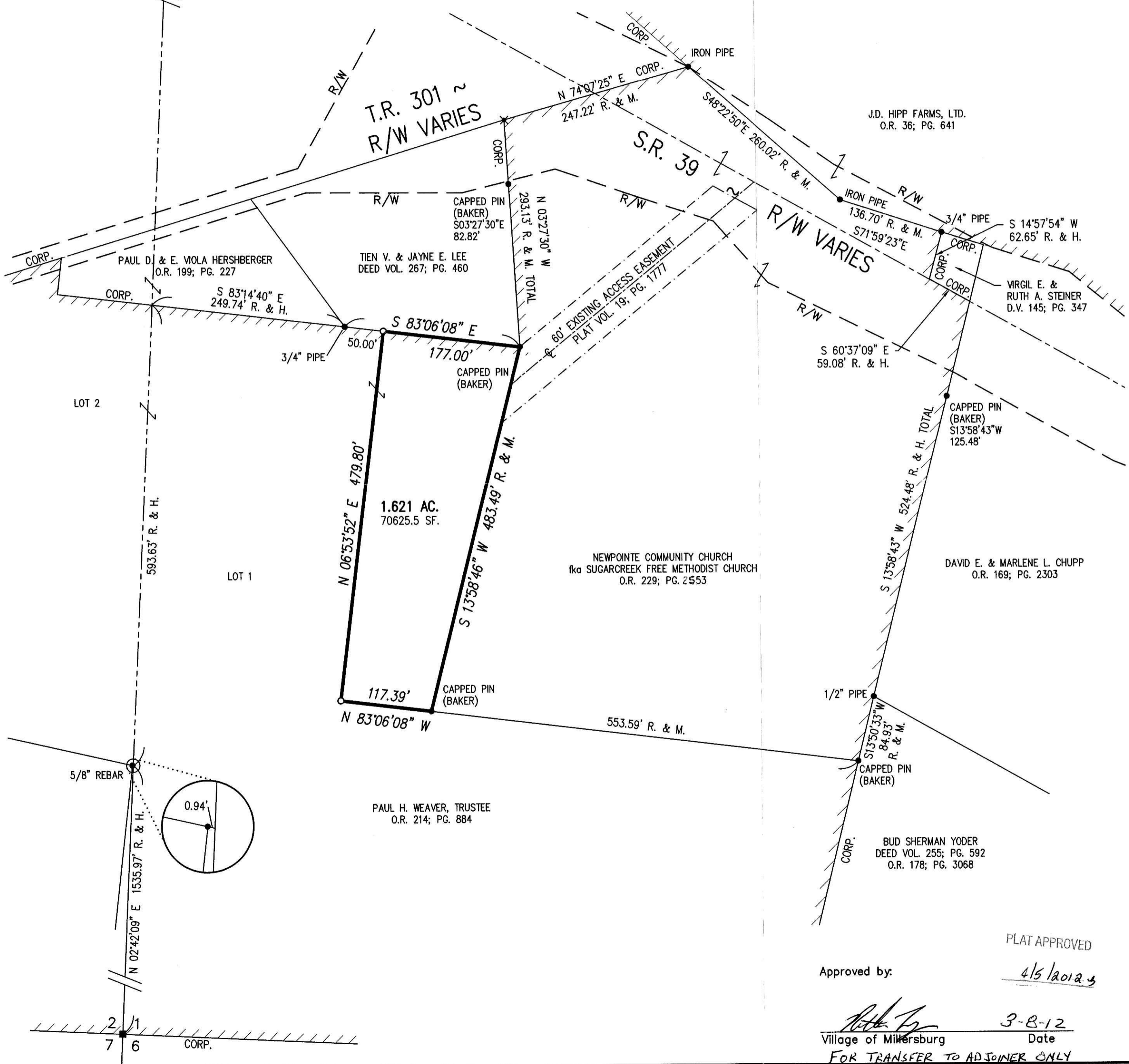
Distances shown hereon are expressed in feet and decimal parts thereof, bearings are used to express angles only, iron pins or monuments were found or set as indicated hereon. All of which I believe to be correct to the best of my knowledge.



By: *Mark E. Purdy* 3-2-12
Mark E. Purdy, P.S. #7307 Date

SHAFFER, JOHNSTON, LICHTENWALTER & ASSOCIATES, INC.
Consulting Engineers & Surveyors
3477 Commerce Parkway, Suite C
Wooster, Ohio 44691
TEL (330) 345-6377 FAX (330) 345-6725 EMAIL sjl@sjl-inc.com

DRAWN C. Falb	CHECKED	SCALE 1" = 100'	DATE 03/02/12
DWG NO: EW-2405-SURVEY1		JOB NO: EW-2405	
		SHEET 1 OF 1	



PLAT APPROVED
4/5/2012
Approved by: *[Signature]*
Village of Millersburg Date 3-8-12
FOR TRANSFER TO ADJOINER ONLY