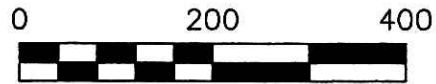


PRAIRIE TOWNSHIP
N.E. & N.W. QTRS. SECTION 1
T-13 N; R-13 W
HOLMES COUNTY, OHIO

SURVEYED FOR: JACOB RABER

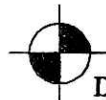


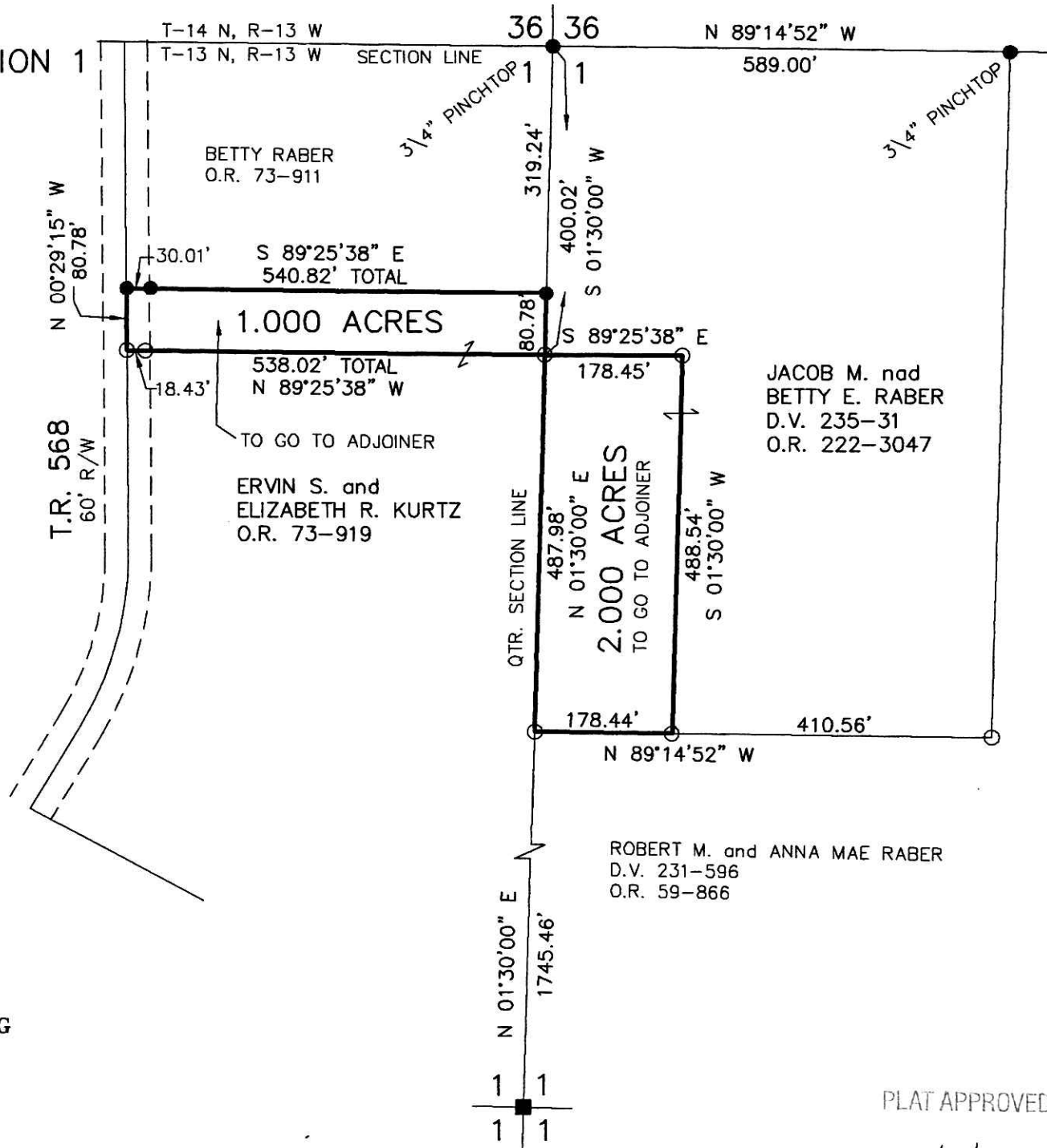
SCALE: 1"=200'

- STONE FOUND
- 5/8" REBAR FOUND UNLESS OTHERWISE NOTED
- 5/8" REBAR SET WITH I.D. CAP I.D. CAP MARKED "BAKER 6938"

REFERENCES

- O.R. VOL. 59 PAGE 866
- O.R. VOL. 73 PAGES 911 & 919
- O.R. VOL. 222 PAGE 3047
- BEARINGS FROM PLAT VOL. 17 PAGE 862


DONALD C. BAKER SURVEYING
 138 N. CLAY STREET
 MILLERSBURG, OHIO 44654
 PH. 330-674-4788
 FAX 330-674-6027



Additional approval for this and any adjacent properties must be requested and granted prior to any future transfers by deed. Recording of this document does not waive the requirements of local Health District Subdivision Regulations or other governing authorities which may be in effect at the time of any future deed transfer.



201200076553
 Filed for Record in
 HOLMES COUNTY, OH
 ANITA HALL, COUNTY RECORDER
 04-11-2012 At 04:05 pm.
 SMALL PLAT 40.00
 OR Book 19 Page 2044 - 2044
 OR 233 pgs 1415 + 1418

201200076553
 MONROE STREET
 TITLE
 MILLERSBURG, OH



I CERTIFY THIS SURVEY TO BE CORRECT TO THE BEST OF MY KNOWLEDGE.


 DONALD C. BAKER P.S. 6938

DATE: JANUARY 24, 2012
 FDB\CJG
 FILE NAME: WORK4\S-20-12\MLD

PLAT APPROVED

4/4/2012