

201200076150
 Filed for Record in
 HOLMES COUNTY, OH
 ANITA HALL, COUNTY RECORDER
 03-21-2012 At 09:35 am.
 SMALL PLAT 40.00
 OR Book 19 Page 2032 - 2032
 ORV 232 page 2985

REFERENCES

DEED VOL. 220 PAGE 409
 O.R. VOL. 185 PAGE 800
 O.R. VOL. 182 PAGE 2562
 O.R. VOL. 229 PAGE 2813
 PLAT VOL. 17 PAGE 119
 PLAT VOL. 8 PAGE 85
 PLAT VOL. 10 PAGE 136

BEARINGS FROM
 PLAT VOL. 17 PAGE 119

PRAIRIE TOWNSHIP
 N.E. QTR. SECTION 25
 T-14 N; R-13 W
 HOLMES COUNTY, OHIO

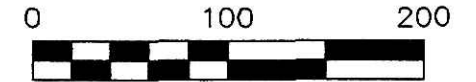
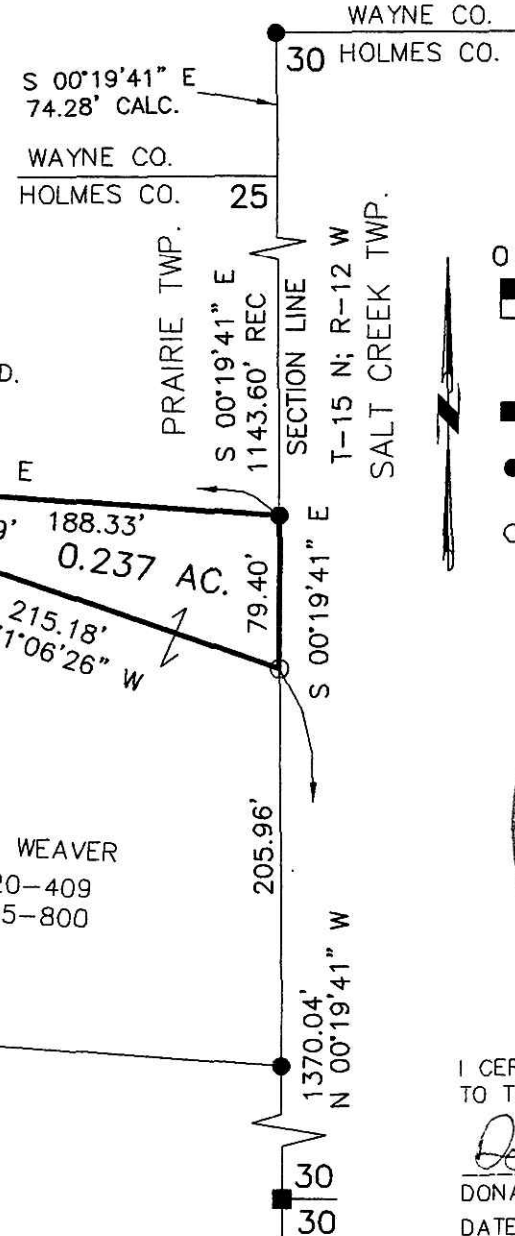
SURVEYED FOR: LEON MILLER

NOTE:
 THIS 0.237 ACRE TRACT
 TO GO TO ADJOINER

SALT CREEK HOLDINGS, LTD.
 O.R. 182-2562

TODD A. WEAVER
 O.R. 32-221
 O.R. 229-2813

WINNIE J. WEAVER
 D.V. 220-409
 O.R. 185-800



SCALE: 1"=100'

- STONE FOUND
- 5/8" REBAR FOUND UNLESS OTHERWISE NOTED
- 5/8" REBAR SET WITH I.D. CAP I.D. CAP MARKED "BAKER 6938"



I CERTIFY THIS SURVEY TO BE CORRECT TO THE BEST OF MY KNOWLEDGE.

Donald C. Baker

DONALD C. BAKER P.S. 6938

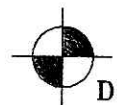
DATE: DEC. 27, 2011

FDB\JG

FILE NAME: WORK4\S-593-11

201200076150

HEARTLAND TITLE
 MILLERSBURG OH 44654



DONALD C. BAKER SURVEYING
 138 N. CLAY STREET
 MILLERSBURG, OHIO 44654
 PH. 330-674-4788
 FAX 330-674-6027

PLAT APPROVED

3/16/2012