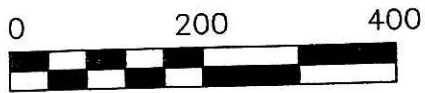


201200076103
HEARTLAND
TITLE
MILLERSBURG OH

Instrument 201200076103 OR Book Page 19 2030

Additional approval for this and any adjacent properties must be requested and granted prior to any future transfers by deed. Recording of this document does not waive the requirements of local Health District, Subdivision Regulations or other governing authorities which may be in effect at the time of any future deed transfer.

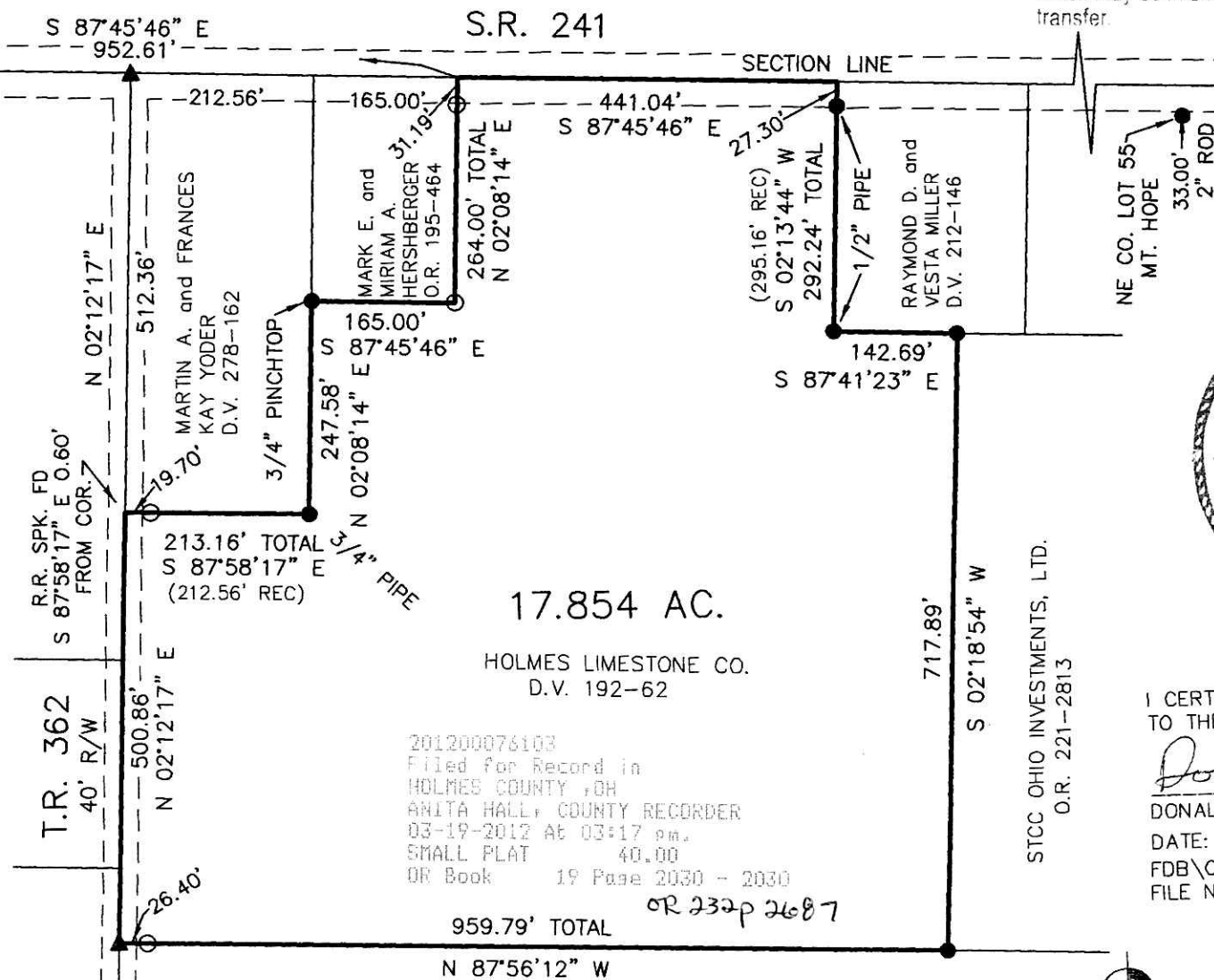
SALT CREEK TOWNSHIP
N.E. QTR. FRACTIONAL
SECTION 11
T-14 N; R-12 W
HOLMES COUNTY, OHIO
SURVEYED FOR: HOLMES LIMESTONE &
DAVE KAUFMAN REALTY



SCALE: 1"=200'

- ▲ R.R. SPIKE FOUND
- 5/8" REBAR FOUND
UNLESS OTHERWISE NOTED
- 5/8" REBAR SET WITH I.D. CAP
I.D. CAP MARKED "BAKER 6938"

- REFERENCES
- DEED VOL. 192 PAGE 62
 - DEED VOL. 278 PAGE 162
 - DEED VOL. 223 PAGE 338
 - O.R. VOL. 195 PAGE 464
 - PLAT VOL. 15 PAGE 64
 - PLAT VOL. 14 PAGE 225
 - PLAT VOL. 7 PAGE 432
 - PLAT VOL. 5 PAGE 101
 - PLAT VOL. 8 PAGE 715
 - PLAT VOL. 12 PAGE 10
 - PLAT VOL. 18 PAGE 556
 - PLAT VOL. 14 PAGE 225
 - BEARINGS FROM PLAT VOL. 15 PAGE 64



APPROVED FOR TRANSFER ONLY
NO SUBDIVISION PLAT REQUIRED
(O.R.C. 711.001 - 711.151)
Lot(s) not for sale, unless
approved by local health
HOLMES CO. PLANNING COMM.

By JB Date 3-3-12



I CERTIFY THIS SURVEY TO BE CORRECT
TO THE BEST OF MY KNOWLEDGE.

Donald C. Baker
DONALD C. BAKER P.S. 6938
DATE: FEBRUARY 23, 2012
FDB\CJG
FILE NAME: WORK4\S-73-12\DB-MD

ABRAHAM A. and VERNA KEIM
D.V. 223-338

PLAT APPROVED

3/12/2012

DONALD C. BAKER SURVEYING
138 N. CLAY STREET
MILLERSBURG, OHIO 44654
PH. 330-674-4788
FAX 330-674-6027