

BERLIN TOWNSHIP
 S.W. QTR. SECTION 8
 T-9 N; R-6 W
 HOLMES COUNTY, OHIO

SURVEYED FOR: DAVID SCHLABACH

PART OF LOT 2
 GERBER VALE ESTATES
 P. 17-691



SCALE: 1"=100'

Instrument 201200075000 OR Book Page 19 1991

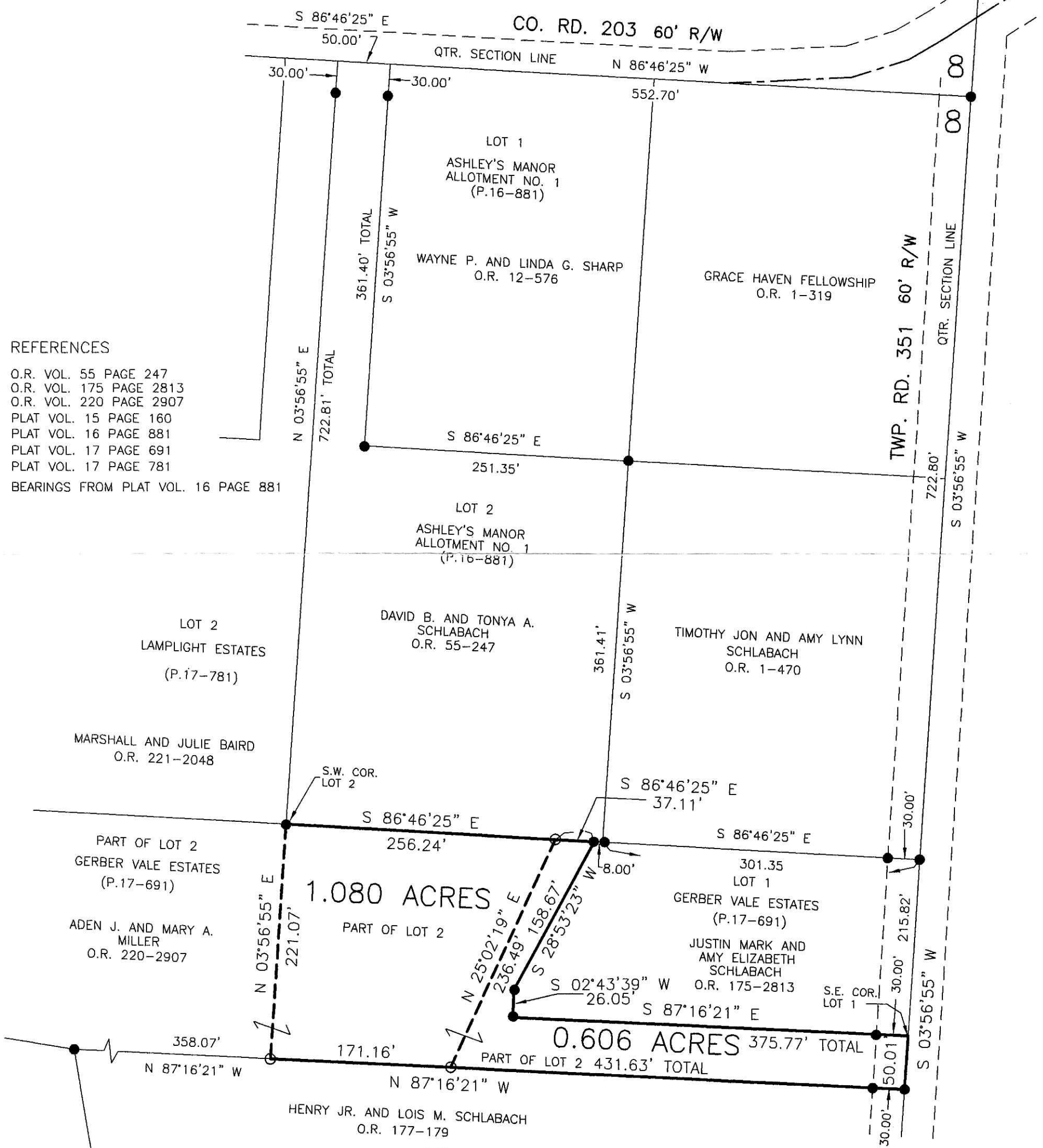
201200075000
 PAUL A MILLER LAW
 MILLERSBURG OH

201200075000
 Filed for Record in
 HOLMES COUNTY, OH
 ANITA HALL, COUNTY RECORDER
 01-17-2012 At 11:35 am.
 SMALL PLAT 40.00
 OR Book 19 Page 1991 - 1991
 OR 231 pgs 657 + 660

- 5/8" REBAR FOUND
 UNLESS OTHERWISE NOTED
- 5/8" REBAR SET WITH I.D. CAP
 I.D. CAP MARKED "BAKER 6938"

REFERENCES

- O.R. VOL. 55 PAGE 247
- O.R. VOL. 175 PAGE 2813
- O.R. VOL. 220 PAGE 2907
- PLAT VOL. 15 PAGE 160
- PLAT VOL. 16 PAGE 881
- PLAT VOL. 17 PAGE 691
- PLAT VOL. 17 PAGE 781
- BEARINGS FROM PLAT VOL. 16 PAGE 881



I CERTIFY THIS SURVEY TO BE CORRECT TO THE BEST OF MY KNOWLEDGE.

Donald C. Baker
 DONALD C. BAKER P.S. 6938
 DATE: OCT. 18, 2011
 KES\CJG\ALG
 File Name: WORK3\S-491A11\ALG



APPROVED FOR THE PLAT BY
 HOLMES COUNTY PLANNING COM.
 (O.D.C. 711.03(B) 2011.1)
 (Seal for full plat as approved by Board of Health, HOLMES CO. PLANNING COMM.)

PLAT APPROVED

12/15/2011

By *AB* Date *12/13/11*
 DONALD C. BAKER SURVEYING
 138 N. CLAY STREET
 MILLERSBURG, OHIO 44654
 PH. 330-674-4788
 FAX 330-674-6027